



 **ALLIANT
POWER**
Application Guide



LIMITED WARRANTY POLICY

The following limited warranty applies to US and Canadian customers only.

Alliant Power warrants our products to be free from defects in material or workmanship in accordance with the following:

The warranty period commences the day the product is delivered to the original consumer purchaser. Alliant Power warrants that it will credit or replace, free of charge, any product which, under normal conditions of use and service, proves to be defective in material or workmanship and which is within the warranty period below.

Warranty Coverage

The Alliant Power Limited Warranty COVERS and therefore INCLUDES:

- Defective parts in material and workmanship
- Labor costs for removal & reinstallation of affected parts*
- Unlimited miles/kilometers on installed parts within the first 13 months after commencement of part warranty period

Warranty Exclusions

The Alliant Power Limited Warranty DOES NOT COVER and therefore EXCLUDES:

- Labor costs incurred in diagnosis of defects or any other consequential expenses
- Failures caused by fuel or oil contamination, fire damage, misuse, negligence, modification, abuse, improper application, installation, or operation
- Failures caused by unauthorized service or use of unauthorized parts

This warranty is in lieu of all other express and implied warranties, including the implied warranties of merchantability and fitness for a particular purpose. Alliant Power does not assume any responsibility for incidental or consequential damages. This warranty sets out your exclusive remedies with respect to the products covered by it. No attempt to alter, modify, or amend this warranty shall be allowed.

Some countries, states, provinces, and other jurisdictions do not allow limitations on how long implied warranties last, or the exclusion or limitation of incidental or consequential damages, so the above limitations or exclusions may not apply to you. This warranty gives you specific legal rights, and you may also have other rights which vary from country to country or state to state or province to province or jurisdiction to jurisdiction.

***Note:** Removal and reinstallation labor reimbursement is issued in accordance with the most recent version of the Alliant Power warranty repair flat rate labor schedule.

For Additional Information Visit alliantpower.com

TABLE OF CONTENTS

FORD

7.3L Power Stroke	4
6.0L and 4.5L Power Stroke.....	15
6.4L Power Stroke	29
6.7L Power Stroke	38

NAVISTAR

T444E.....	48
VT365, VT275, MaxxForce 5.....	55
MaxxForce 7	66
DT466E, I530E, DT466 / 530, HT530	72
Perkins 1300 Series EDi, Detroit Diesel Series 40E, AGCO 9675	78
DT466 / 570, HT570, MaxxForce DT / 9 / 10	80

GM

6.5L.....	90
6.6L Duramax.....	93

DODGE/CUMMINS

Engines with PT Pumps	100
5.9L	101
6.7L	105

SPRINTER/JEEP

2.7L and 3.0L	108
---------------------	-----

JOHN DEERE

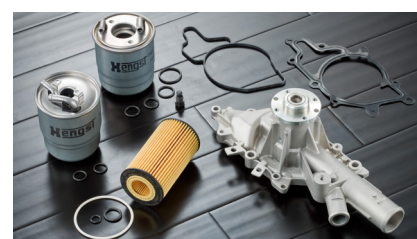
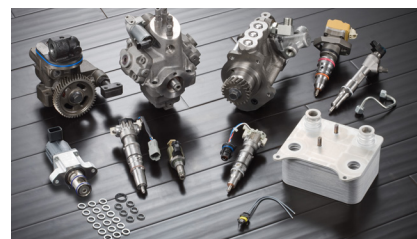
4.5L and 6.8L	112
8.1L	114
9.0L	115

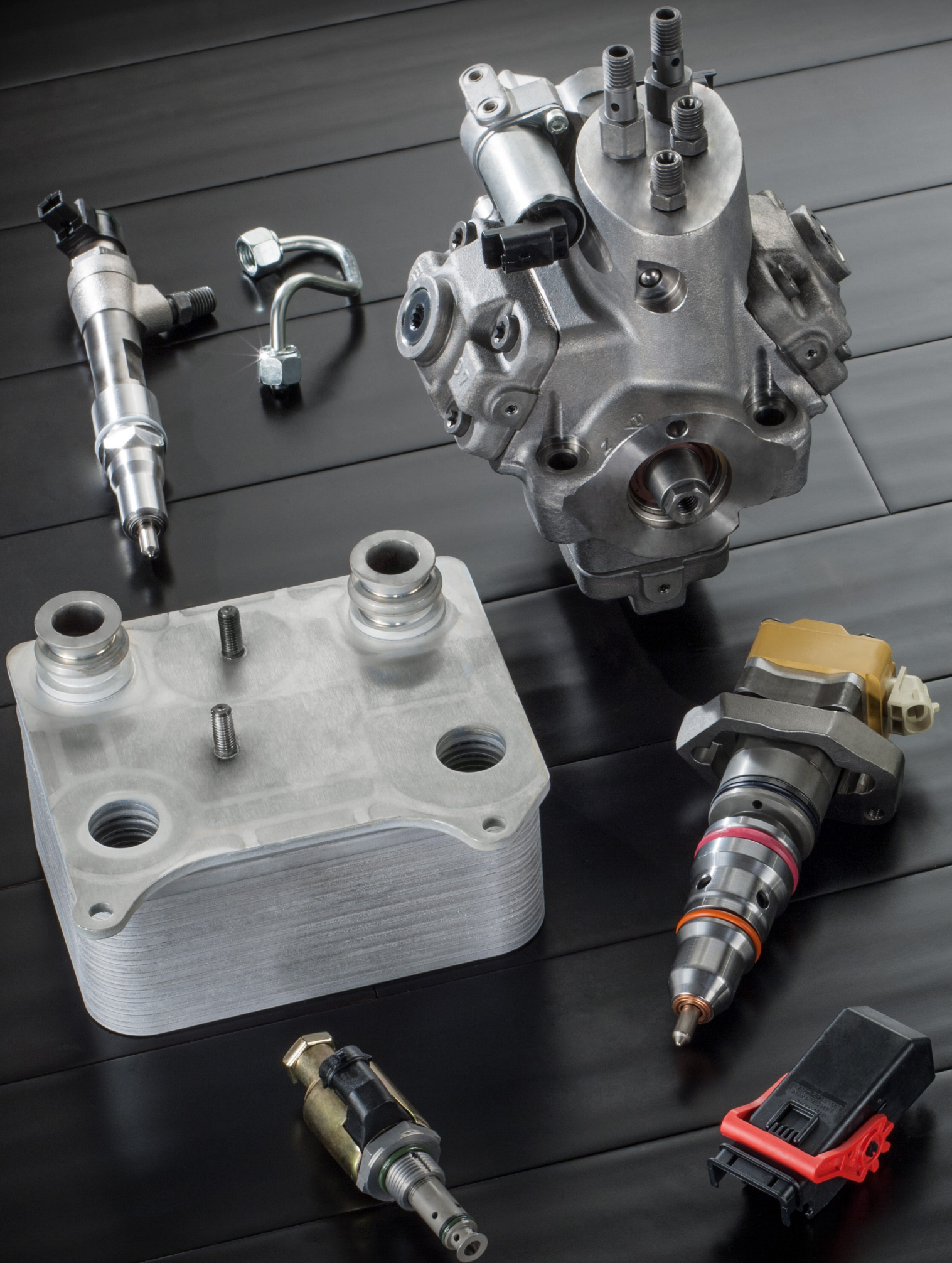
TOOLS

Diagnostic / Testing	118
Disassembly / Assembly	118
Cleaning / Prep	120

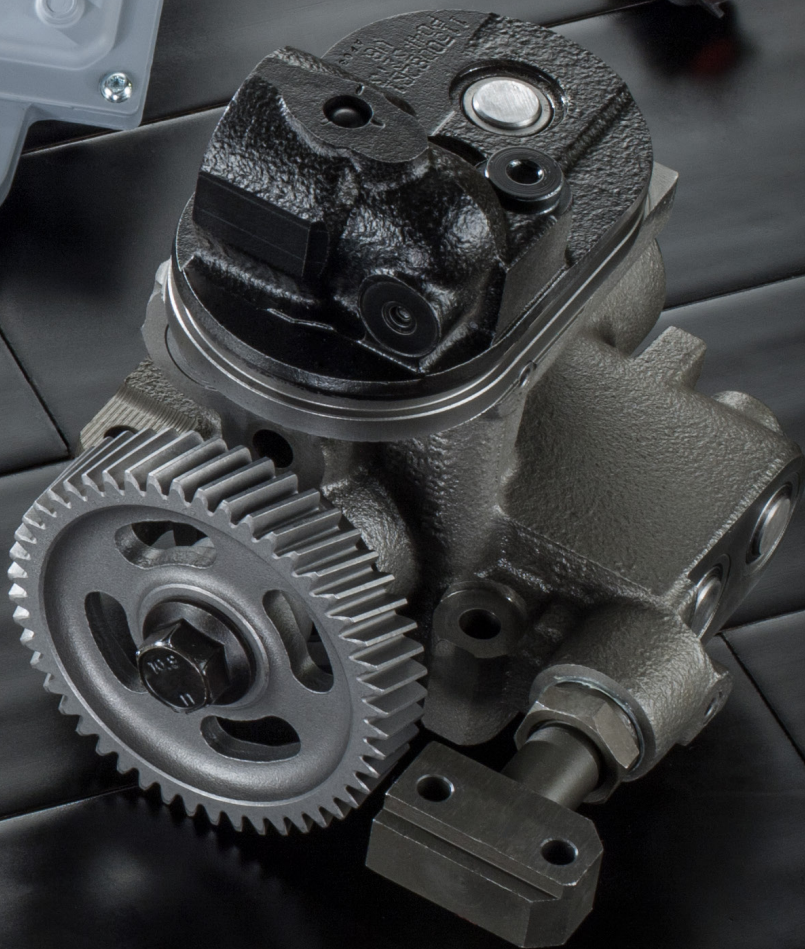
INDEX

OEM Part Number Cross Reference.....	121
Alliant Power Part Number Index.....	127





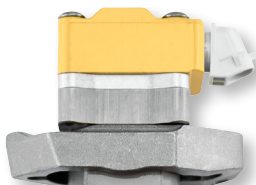
FORD



7.3L POWER STROKE

Injectors

AP63800AA

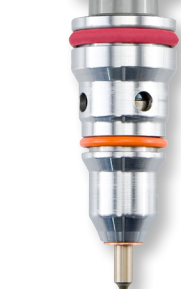


HEUI Injector*

OEM Part Numbers: F81Z9E527DRM, F4TZ9VE527AARM, F7TZ9E527ARM

Year Range:	Application:
1994–1998	F Series
1994–1996	F Series (California)
1994–1996	E Series

AP63801AB



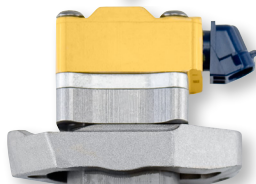
HEUI Injector*

OEM Part Numbers: F81Z9E527BRM, F7TZ9E527BRM, F61Z9VE527BRM

Notes: Prime (Split Shot) Injector. Engines built BEFORE 12/07/1998.

Year Range:	Application:
1999	F Series
1997–1999	F Series (California)
1997–1998	E Series

AP63803AD



HEUI Injector*

OEM Part Numbers: F81Z9E527CRM, 5C3Z9VE527BRM

Notes: Prime (Split Shot) Injector. Engines built AFTER 12/07/1998.

Year Range:	Application:
1999–2003	F Series, E Series

AP63804AE



HEUI Injector*

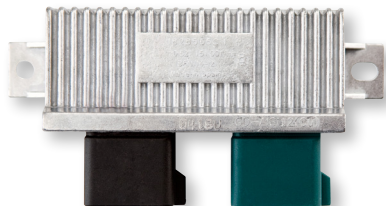
OEM Part Numbers: F81Z9E527EARM, XC3Z9E527AARM, F61Z9VE527ERM, 5C3Z9VE527ARM

Notes: Long Lead (LL or blue harness connector) Injector. Engines built AFTER 12/07/1998. Used in #8 cylinder to eliminate "cackle" (Per Ford Bulletins 00–10–1, 00–22–1, and 01–14–6).

Year Range:	Application:	ESN Range:
1999–2003	F Series	661,496 to 896,812
1999–2003	E Series	661,974 to 896,812

Modules

AP63406



Glow Plug Control Module (GPCM)

OEM Part Numbers: YC3Z12B533AA, DY876

Notes: Field data indicates Glow Plug Control Modules (GPCMs) were used on some 2000 to 2003 vehicles.

Year Range:	Application:
2000–2003	F–250 / F–550, Excursion, E Series

**Indicates products with a core charge.*

7.3L POWER STROKE

Modules *continued*

Remanufactured Injector Drive Module (IDM)*

OEM Part Number: F7TZ12B599AC

Year Range:
1994½–1998

Application:
F Series, E Series

AP65110

Remanufactured Injector Drive Module (IDM)*

OEM Part Numbers: XC3Z12B599AA, 2C2Z12B599A

Year Range:
1999–2003

Application:
F Series, Excursion, E Series

AP65120



Fuel System Components

Fuel Transfer Pump–Mechanical

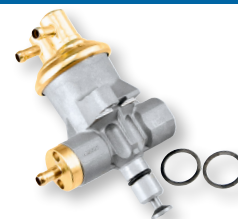
OEM Part Numbers: F6TZ9350A, YC3Z9350CA

Notes: Includes two banjo gaskets.

Year Range:
1994–1998

Application:
F Series, E Series

APM61067



Fuel Transfer Pump–Electronic (Bosch)

OEM Part Numbers: F81Z9C407AC, 0 580 464 074

Year Range:
1999–2003

Application:
F Series, Excursion, E Series

69136



Fuel Filter Heater Element

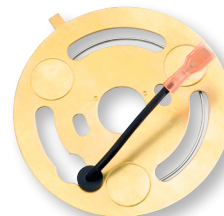
OEM Part Number: F5TZ9J294A

Notes: Field data indicates both elements (AP63409 and AP63410) were used for MY 1998 vehicles. Be sure to verify which element is in place.

Year Range:
1994–1998

Application:
F Series, E Series

AP63409



Fuel Filter Heater Element

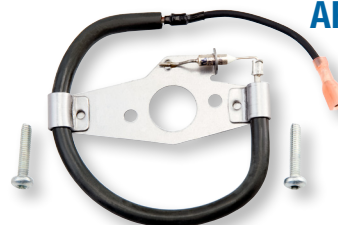
OEM Part Number: F81Z9J294AA

Notes: Field data indicates both elements (AP63409 and AP63410) were used for MY 1998 vehicles. Be sure to verify which element is in place.

Year Range:
1998–2003

Application:
F Series, Excursion, E Series

AP63410



7.3L POWER STROKE

Engine Components

AP63404



Exhaust Back Pressure (EBP) Tube

OEM Part Number: 1C3Z9D477AA

Year Range:
1999½–2003

Application:
F Series, Excursion, E Series

AP63411



HEUI Injector Sleeve—Brass

OEM Part Number: F4TZ9F538A

Year Range:
1994–2003

Application:
F Series, Excursion, E Series

AP63452



Engine Oil Cooler

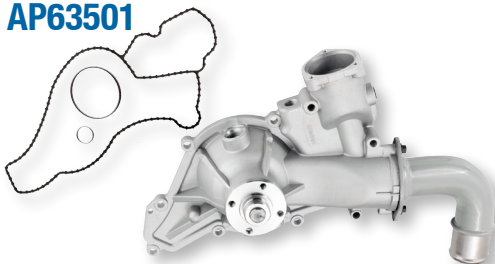
OEM Part Number: 1C3Z6A642AA

Notes: Requires AP0004 Engine Oil Cooler O–ring and Gasket Kit for installation.

Year Range:
1994–2003

Application:
F Series, Excursion, E Series

AP63501



Water Pump

OEM Part Numbers: F81Z8501CRM / ARM, F6TZ8501AARM, 2C3Z8V501BA

Notes: Includes mounting gasket. May require heater hose adapter fitting for installation. See Technical Bulletin APTB 04/06.

Year Range:
1994–1995
1996–2003

Application:
F Series, E Series
F Series, Excursion, E Series

HP004X



Remanufactured High-Pressure Oil Pump (Bosch)

OEM Part Number: F4TZ9A543BRM

Notes: Includes mounting gasket.

Year Range:
1994–1995

Application:
F Series, E Series

HP005X



Remanufactured High-Pressure Oil Pump (Bosch)

OEM Part Number: F6TZ9A543ARM

Notes: Includes mounting gasket.

Year Range:
1996–1997

Application:
F Series, E Series

7.3L POWER STROKE

Engine Components *continued*

Remanufactured High-Pressure Oil Pump (Bosch)

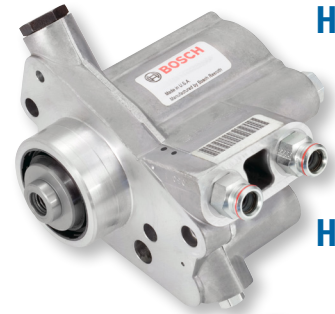
OEM Part Number: F81Z9A543BRM

Notes: Includes mounting gasket.

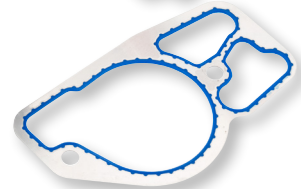
Year Range:
1998–1999½

Application:
F Series, E Series

HP007X



HP008X



Remanufactured High-Pressure Oil Pump (Bosch)

OEM Part Number: F81Z9A543CRM

Notes: Includes mounting gasket.

Year Range:
1999½–2003

Application:
F Series, Excursion, E Series

Sensors

Ambient Air Temperature (AAT) Sensor

OEM Part Numbers: 9U2Z12A648A, DY1145

Year Range:
1994–1998

Application:
F Series



AP63490



Camshaft Position (CMP) Sensor

OEM Part Numbers: F4TZ12K073C, DU87

Year Range:
1994–1996

Application:
F Series

AP63491



Camshaft Position (CMP) Sensor

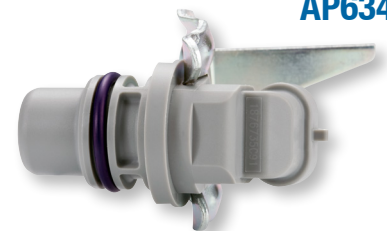
OEM Part Numbers: F7TZ12K073A / B

Year Range:
1997–2003
2000–2003
2000–2003
1997–2003

Application:
F–250 / F–550
F–650 / F–750
Excursion
E Series

ESN Range:
375,549 to 2,030,402
1,026,248 to End
896,813 to 2,030,402
375,549 to 2,030,402

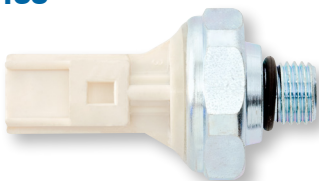
AP63400



7.3L POWER STROKE

Sensors *continued*

AP63435



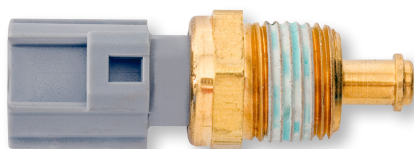
Engine Oil Pressure (EOP) Sensor

OEM Part Numbers: F81Z9278AA, SW5267

Year Range:
1994–2003

Application:
F Series, Excursion, E Series

AP63436



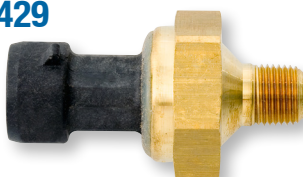
Engine Oil Temperature (EOT) Sensor

OEM Part Numbers: F5AZ12A648AB, 3F1Z12A648A, DY961, DY1144

Year Range:
1994–2003

Application:
F Series, Excursion, E Series

AP63429



Pressure Sensor

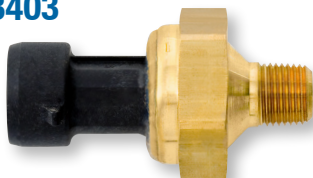
OEM Part Numbers: 1C3Z9J460AA, DPFE1

Notes: Exhaust Back Pressure (EBP).

Year Range:
1994–1997

Application:
F Series, E Series

AP63403



Exhaust Back Pressure (EBP) Sensor

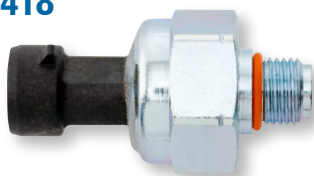
OEM Part Numbers: 4C3Z9J460A, DPFE3

Year Range:
1997–2002
2000–2002
2000–2002
1995–2003

Application:
F–250 / F–550
F–650 / F–750
Excursion
E Series

ESN Range:
501 to 2,030,402
1,026,248 to End
896,813 to 2,030,402
35,651 to 2,030,402

AP63418



Injection Control Pressure (ICP) Sensor

OEM Part Number: F6TZ9F838A

Year Range:
1999–2002
2000–2002
2000–2002
1995–2003

Application:
F–250 / F–550
F–650 / F–750
Excursion
E Series

ESN Range:
661,974 to 2,030,402
1,026,248 to End
896,813 to 2,030,402
35,651 to 2,030,402

AP63489



Manifold Absolute Pressure (MAP) Sensor

OEM Part Numbers: F4TZ9F479A, DY708

Year Range:
1994–1998

Application:
F Series, E Series

NEW

7.3L POWER STROKE

Sensors *continued*

Manifold Absolute Pressure (MAP) Sensor

OEM Part Numbers: F8UZ9F479BA, CX1679

Year Range:
1998–2003

Application:
F Series, Excursion



AP63492



Actuators

Injection Pressure Regulator (IPR) Valve

OEM Part Numbers: F4TZ9C968C / CB, 2C3Z9C968BA

Notes: With edge filter.

Year Range:
1994–1995½

Application:
F Series, E Series

ESN Range:
0 to 187,099



AP63401

Injection Pressure Regulator (IPR) Valve

OEM Part Numbers: F81Z9C968AA / AB

Notes: Without edge filter.

Year Range:
1995½–2003

Application:
F Series, Excursion, E Series

ESN Range:
187,100 to End



AP63402

Glow Plug Relay

OEM Part Numbers: F81Z12B533AC, F7TZ12B533A / CA, DY861, RY525

Year Range:
1994–2003
2000–2002
2000–2002
1995–2003

Application:
F–250 / F–550
F–650 / F–750
Excursion
E Series



AP63405

Electrical Harness and Repair

Valve Cover Harness Connector Repair Kit

Notes: Repairs AP0016 Valve Cover Gasket Connector Pigtail.

Year Range:
1998–2003

Application:
F Series, Excursion, E Series



AP0009

7.3L POWER STROKE

Electrical Harness and Repair continued

AP0010



Valve Cover Harness Connector Repair Kit

Notes: Repairs AP0015 Valve Cover Gasket Connector Pigtail.

Year Range:
1994–1997

Application:
F Series, E Series

AP0015

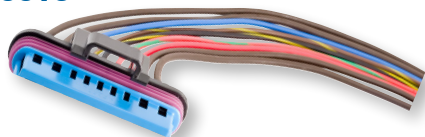


Valve Cover Gasket Connector Pigtail

Year Range:
1994–1997

Application:
F Series, E Series

AP0016



Valve Cover Gasket Connector Pigtail

Year Range:
1998–2003

Application:
F Series, Excursion, E Series

AP0021



3 Wire Pigtail

OEM Part Number: 5C3Z12224A

Notes: Fits AP63418 Injection Control Pressure (ICP) Sensor as well as AP63403 and AP63429 Exhaust Back Pressure (EBP) Sensors.

Year Range:
1994–2003

Application:
F Series, Excursion, E Series

AP0068



2 Wire Pigtail

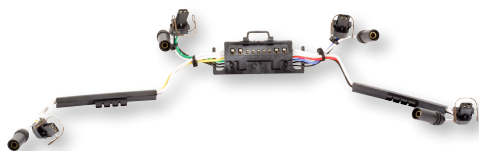
Notes: Fits AP63401 and AP63402 Injection Pressure Regulator (IPR) Valves and all HEUI A Injectors.

Year Range:
1994–1995½
1995½–2003

Application:
F Series, E Series
F Series, Excursion, E Series

ESN Range:
0 to 187,099
187,100 to End

AP63413



Internal Injector Harness

OEM Part Number: F81Z9D930AB

Notes: Use with AP0014 Valve Cover Gasket Kit.

Year Range:
1998–2003

Application:
F Series, Excursion, E Series

7.3L POWER STROKE

Electrical Harness and Repair *continued*

Internal Injector Harness

OEM Part Number: F4TZ9D930K

Notes: Use with AP0013 Valve Cover Gasket Kit.

Year Range:
1994–1997

Application:
F Series, E Series

AP63414



Seal and Gasket Kits

HEUI Injector Seal Kit

OEM Part Number: F8TZ9229AA

Year Range:
1994–2003

Application:
F Series, Excursion, E Series

AP0001



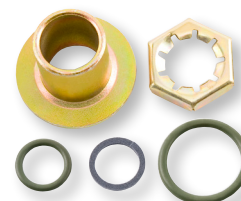
Injection Pressure Regulator (IPR) Valve Seal Kit

OEM Part Number: F6TZ9C977AN

Year Range:
1994–2003

Application:
F Series, Excursion, E Series

AP0003



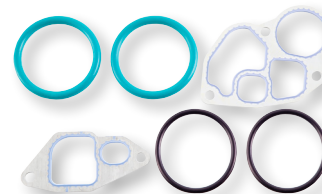
Engine Oil Cooler O-ring and Gasket Kit

OEM Part Numbers: F4TZ6A636A, F7TZ6A636AAA, 1C3Z6C610BA, 1C3Z6K649BA

Year Range:
1994–2003

Application:
F Series, Excursion, E Series

AP0004



Fuel Filter Drain Valve Kit

OEM Part Numbers: F6TZ9157BA and F5TZ9151A

Year Range:
1994–1997

Application:
F Series, E Series

AP0008



Fuel Filter Drain Valve Kit

OEM Part Number: F81Z9C065AA

Notes: Includes grommets.

Year Range:
1998–2003

Application:
F Series, Excursion, E Series

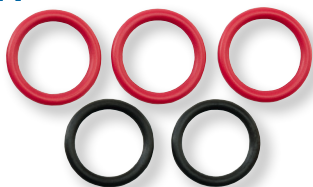
AP0007



7.3L POWER STROKE

Seal and Gasket Kits *continued*

AP0011



High-Pressure Oil Pump Seal Kit

OEM Part Number: 2C3Z9G804AB

Year Range:
1994–2003

Application:
F Series, Excursion, E Series

AP0013



Valve Cover Gasket Kit

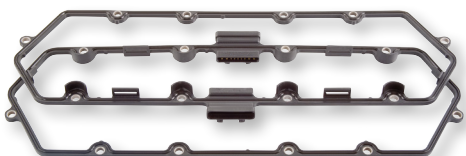
OEM Part Number: F4TZ6584A

Notes: Use with AP63414 Internal Injector Harness. Package of two.

Year Range:
1994–1997

Application:
F Series, E Series

AP0014



Valve Cover Gasket Kit

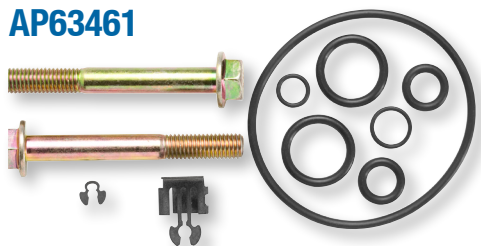
OEM Part Number: F81Z6584AA

Notes: Use with AP63413 Internal Injector Harness. Package of two.

Year Range:
1998–2003

Application:
F Series, Excursion, E Series

AP63461



Turbo Installation Kit

OEM Part Number: F81Z6N653BA

Year Range:
1999–2003

Application:
F Series, Excursion, E Series

Engine Accessories

AP63421



Belt Tensioner

OEM Part Numbers: F8UZ6B209CA, BT50

Year Range:
1998–2003
2000–2003

Application:
F Series, E Series
Excursion

7.3L POWER STROKE

Engine Accessories *continued*

Vacuum Pump—Electronic

OEM Part Numbers: 6C3Z2A451A, 6C3A2A451BA, F81Z2A451BA, 4C3Z2A451BA, BRPV-7

Year Range:
1998–2003

Application:
F Series, Excursion, E Series



AP63433

Vacuum Pump—Mechanical

OEM Part Numbers: F6TZ2A451AA, BRPV-6

Year Range:
1998–2002
2000–2002
1996–2002
2002

Application:
F-250 / F-450
F-550
E-350
E-450 / E-550



AP63700

Vacuum Pump—Mechanical

OEM Part Numbers: F4TZ2A451A, BRPV-5

Year Range:
1994–1998

Application:
F Series, E Series



AP63724

Starter

OEM Part Numbers: F4TZ11002A, F5TU11000AA / AB / AD

Year Range:
1994–2003

Application:
F Series, Excursion, E Series



AP83000

Filters

Spin-on Fuel Filter/Water Separator (Racor)

OEM Part Number: FD3375

Notes: Only fits 7.3L IDI Diesel.

Year Range:
1988–1994

Application:
F Series, E Series



PFF829B



Fuel Filter Bowl/Drain Assembly (Racor)

Notes: Use with PFF829B Spin-on Fuel Filter/Water Separator (Racor). Only fits 7.3L IDI Diesel.

Year Range:
1988–1994

Application:
F Series, E Series



PFRK20567



7.3L POWER STROKE

Filters continued

PFF4595



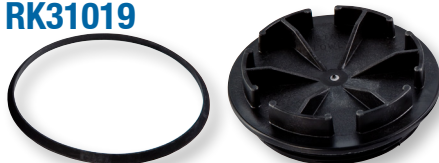
Fuel Filter Element Service Kit (Racor)

OEM Part Number: FD4495

Year Range:
1994–1998

Application:
F Series, E Series

RK31019



Fuel Filter Top Cover (Racor)

OEM Part Number: F5TZ9G270A

Year Range:
1994–1998

Application:
F Series, E Series

PFF4596



Fuel Filter Element Service Kit (Racor)

OEM Part Number: FD4596

Year Range:
1998½–2003

Application:
F Series, Excursion, E Series

RK31449



Fuel Filter Top Cover (Racor)

Year Range:
1998½–2003

Application:
F Series, Excursion, E Series

AP63424



Fuel Filter Housing Assembly

OEM Part Numbers: F6TZ9155AB, FG1054

Notes: Includes PFF4595 Fuel Filter Element Service Kit (Racor), RK31019 Fuel Filter Top Cover (Racor), and AP63409 Fuel Filter Heater Element. Field data indicates both housings (AP63424 and AP63425) were used for MY 1998 vehicles. Be sure to verify which housing is in place.

Year Range:
1994–1998

Application:
F Series

AP63425



Fuel Filter Housing Assembly

OEM Part Numbers: F81Z9155AC, FG1057

Notes: Includes PFF4596 Fuel Filter Element Service Kit (Racor), RK31449 Fuel Filter Top Cover (Racor), and AP63410 Fuel Filter Heater Element. Field data indicates both housings (AP63424 and AP63425) were used for MY 1998 vehicles. Be sure to verify which housing is in place.

Year Range:
1998½–2003

Application:
F Series, Excursion, E Series

6.0L and 4.5L POWER STROKE

Injectors

Remanufactured G2.8 Injector*

OEM Part Numbers: 3C3Z9E527EBRM / EARM / AE / ABRM / ECRM

Notes: Engines built BEFORE 09/22/2003.

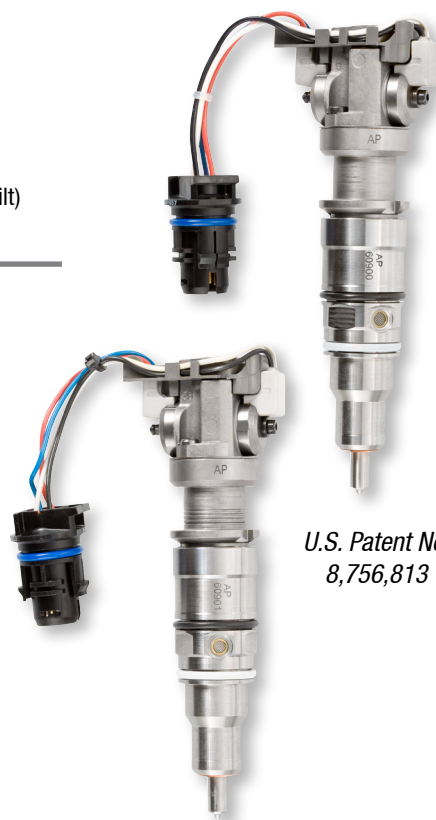
Year Range:
 2003–09/21/2003 F–250 / F–550, Excursion
 2003–09/21/2003 F–250 / F–550, Excursion
 2003–09/21/2003 F–650 / F–750

Application:
 F–250 / F–550, Excursion
 F–250 / F–550, Excursion
 F–650 / F–750

ESN Range:
 0 to 137,745 (Alabama built)
 6,000,000 to 6,155,636 (Indiana built)
 0 to 112,360 (Alabama built)

AP60900

AP60901



U.S. Patent No.
8,756,813

Remanufactured G2.8 Injector*

OEM Part Numbers: 4C3Z9E527AA / BRM

Notes: Engines built ON or AFTER 09/22/2003.

Year Range:
 09/22/2003–2007 F–250 / F–550, Excursion
 2005–2007 F–650 / F–750
 2004–2010 E Series
 2006–2010 4.5L LCF

Application:
 F–250 / F–550, Excursion
 F–650 / F–750
 E Series
 4.5L LCF

Modules

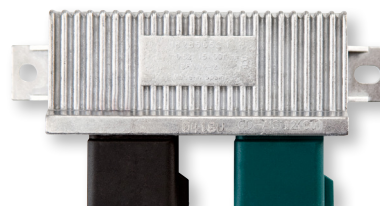
Glow Plug Control Module (GPCM)

OEM Part Numbers: YC3Z12B533AA, DY876

Year Range:
 2003–2007 F–250 / F–550, Excursion
 2004–2010 E Series

Application:
 F–250 / F–550, Excursion
 E Series

AP63406



*Indicates products with a core charge.

6.0L and 4.5L POWER STROKE

Modules *continued*

AP65122



Remanufactured Fuel Injection Control Module (FICM)*

OEM Part Numbers: 4C3Z12B599ABRM / AB

Notes: Pre-programmed. Engines built BEFORE 09/22/2003.

Year Range: 2003–09/21/2003
Application: F–250 / F–550, Excursion

AP65123

Remanufactured Fuel Injection Control Module (FICM)*

OEM Part Numbers: 4C3Z12B599ABRM / AB

Notes: Pre-programmed. Engines built ON or AFTER 09/22/2003.

Year Range: 09/22/2003–2004
Application: F–250 / F–550
 09/22/2003–
 01/31/2005 Excursion

AP65124

Remanufactured Fuel Injection Control Module (FICM)*

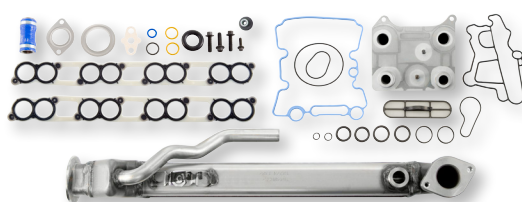
OEM Part Numbers: 4C3Z12B599ABRM / AB

Notes: Pre-programmed.

Year Range: 2005–2007
Application: F–250 / F–550
 02/01/2005–2005 Excursion
 2004–2010 E Series

Engine Components

AP63445

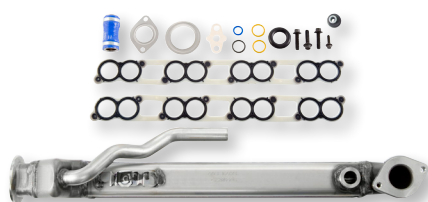


Oil Cooler/Exhaust Gas Recirculation (EGR) Cooler Kit*

Notes: Includes AP63451 Engine Oil Cooler Kit and AP63446 Exhaust Gas Recirculation (EGR) Cooler Kit. Core required only on the Exhaust Gas Recirculation (EGR) Cooler.

Year Range: 2004–2007
Application: F Series, Excursion
 2004–2010 E Series

AP63446



Exhaust Gas Recirculation (EGR) Cooler Kit*

OEM Part Numbers: 4C3Z9P456AF / AC / AH / AJ

Notes: Includes AP63447 Exhaust Gas Recirculation (EGR) Cooler Intake Gasket Kit.

Year Range: 2004–2007
Application: F Series, Excursion
 2004–2010 E Series

**Indicates products with a core charge.*

6.0L and 4.5L POWER STROKE

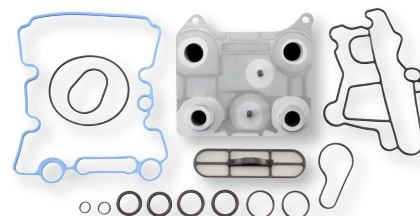
Engine Components *continued*

Engine Oil Cooler Kit

OEM Part Number: 3C3Z6A642CA

Notes: Includes AP0039 Engine Oil Cooler Gasket Kit.

Year Range:	Application:
2003–2007	F Series, Excursion
2004–2010	E Series
2006–2010	4.5L LCF

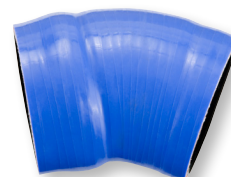


AP63451

Turbo Hose–Short

OEM Part Numbers: 6C3Z6C640C, 6C3Z6C640CA

Year Range:	Application:
2003–2004	F Series, Excursion



AP63454

Turbo Hose–Long

OEM Part Numbers: 6C3Z6C640A, 6C3Z6C640AA

Year Range:	Application:
2004½–2007	F Series, Excursion

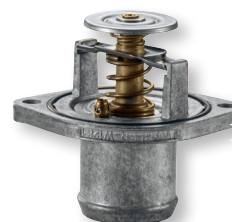


AP63455

Thermostat

OEM Part Numbers: 3C3Z8575AA, RT1169

Year Range:	Application:
2003–2007	F Series
2004–2008	E Series



AP63496



Water Pump

OEM Part Numbers: 3C3Z8501A, PW480

Notes: Includes mounting gasket. F–650 / F–750 use AP63583 Water Pump Navistar VT365.

Year Range:	Application:
2003–07/19/2004	F–250 / F–550, Excursion
2004–07/19/2004	E Series



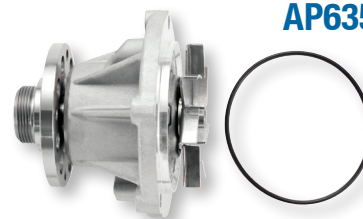
AP63502

Water Pump

OEM Part Numbers: 4C3Z8501AC, PW491

Notes: Includes mounting gasket. F–650 / F–750 use AP63583 Water Pump Navistar VT365.

Year Range:	Application:
07/20/2004–2007	F–250 / F–550, Excursion
07/20/2004–2010	E Series
2006–2010	4.5L LCF

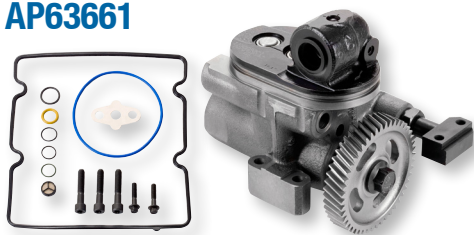


AP63503

6.0L and 4.5L POWER STROKE

Engine Components *continued*

AP63661



Remanufactured High-Pressure Oil Pump*

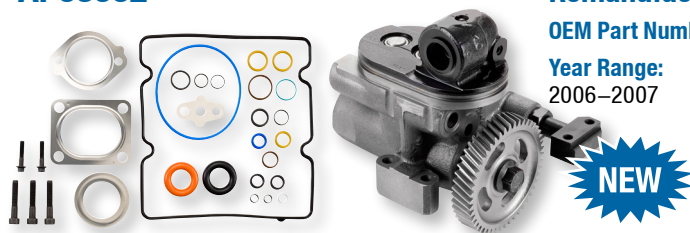
OEM Part Numbers: 5C4Z9A543A / B, 5C3Z9A543C, 5C3Z9A543ARM

Notes: Includes seal kit.

Year Range:
2004½–2007
2004½–2010

Application:
F Series, Excursion
E Series

AP63662



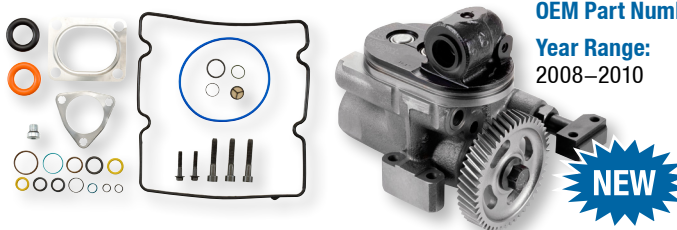
Remanufactured High-Pressure Oil Pump*

OEM Part Number: 6E7Z9A543BRM

Year Range:
2006–2007

Application:
4.5L LCF

AP63663



Remanufactured High-Pressure Oil Pump*

OEM Part Number: 8E7Z9A543CRM

Year Range:
2008–2010

Application:
4.5L LCF

HP032X



Remanufactured High-Pressure Oil Pump (Bosch)

OEM Part Numbers: 3C3Z9A543AARM, 4C3Z9A543AARM

Notes: Includes seal kit.

Year Range:
2003–2004

Application:
F Series, Excursion, E Series

**Indicates products with a core charge.*

6.0L and 4.5L POWER STROKE

Sensors

Engine Speed/Position Sensor

OEM Part Numbers: 3C3Z6C315AA, DY985

Notes: Crankshaft Speed/Position.

Year Range:

2003–2007

2004–2010

2006–2010

Application:

F Series, Excursion

E Series

4.5L LCF



AP63412

Engine Speed/Position Sensor

OEM Part Numbers: 3C3Z12K073AA, 8C3Z12K073A, DU88

Notes: Camshaft Speed/Position.

Year Range:

2003–2007

2004–2010

2006–2010

Application:

F Series, Excursion

E Series

4.5L LCF



AP63415

Ambient Air Temperature (AAT) Sensor

OEM Part Numbers: AE5Z12A647A, DY1137

Year Range:

2004½–2008

2006–2008

Application:

F Series

E Series



AP63493

NEW

Engine Oil Pressure (EOP) Sensor

OEM Part Numbers: F81Z9278AA, SW5267

Year Range:

2003–2007

2004–2010

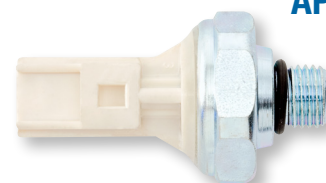
2006–2010

Application:

F Series, Excursion

E Series

4.5L LCF



AP63435

Engine Oil/Coolant/Fuel Temperature (EOT/ECT/FT) Sensor

OEM Part Numbers: 3C3Z10884AA, SW6052

Year Range:

2003–2007

2004–2010

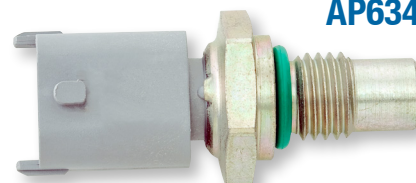
2006–2010

Application:

F Series, Excursion

E Series

4.5L LCF



AP63437

Exhaust Back Pressure (EBP) Sensor

OEM Part Numbers: 4C3Z9J460A, DPFE3

Year Range:

2003–2004

2004

Application:

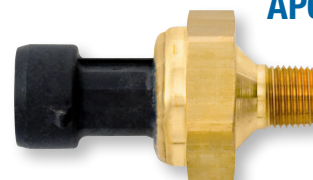
F Series, Excursion

E Series

ESN Range:

6,000,000 to 6,344,942

0 to 149,760

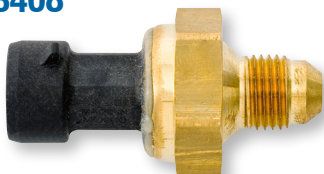


AP63403

6.0L and 4.5L POWER STROKE

Sensors *continued*

AP63408



Exhaust Back Pressure (EBP) Sensor

OEM Part Numbers: 5C3Z9J460A / B, DPFE6

Year Range:

2005–2007
2003–2007
2004–2010

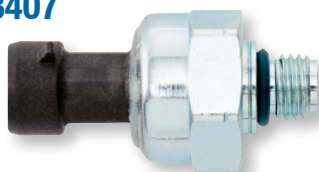
Application:

F–250 / F–550, Excursion
F–650 / F–750
E Series

ESN Range:

6,344,943 to End
149,761 to End

AP63407



Injection Control Pressure (ICP) Sensor

OEM Part Number: 3C3Z9F838EA

Notes: Mounts below turbo.

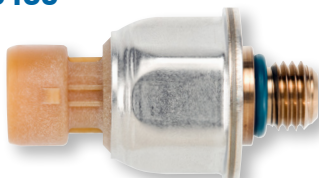
Year Range:

2003–2004

Application:

F Series, Excursion

AP63460



Injection Control Pressure (ICP) Sensor

OEM Part Numbers: 4C3Z9F838A / AB

Notes: Mounts on passenger side valve cover.

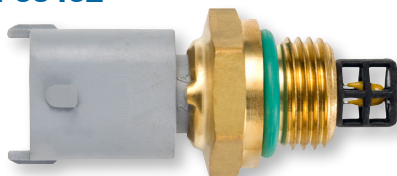
Year Range:

2004–2007
2004–2010
2006–2010

Application:

F Series, Excursion
E Series
4.5L LCF

AP63462



Intake Manifold Air Temperature (IAT) Sensor

OEM Part Numbers: 3C3Z12A697AA, DY984

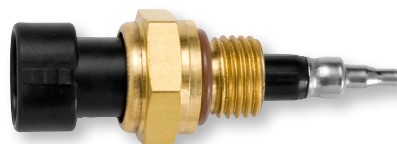
Year Range:

2003–2010
2006

Application:

F Series, Excursion, E Series
4.5L LCF

AP63463



Intake Manifold Air Temperature (IAT) Sensor

OEM Part Numbers: 8C3Z12A697B, DY1112

Year Range:

2007–2010

Application:

4.5L LCF

AP63495



NEW

Manifold Absolute Pressure (MAP) Sensor

OEM Part Numbers: 2L1Z9F479AA, CX1961

Year Range:

2003–2007
2003–2005
2003–2010

Application:

F Series
Excursion
E Series

**Indicates products with a core charge.*

6.0L and 4.5L POWER STROKE

Sensors *continued*

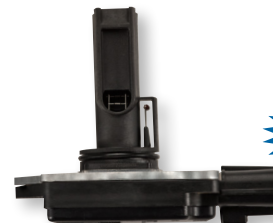
Mass Air Flow (MAF) Sensor*

OEM Part Numbers: 3L3Z12B579ARM, AFLS181RM

Year Range:
2003–2007

Application:
F Series, Excursion

AP63494



NEW

Transmission Fluid Temperature Sensor

OEM Part Number: 3C3Z7H141AA

Year Range:
2003–2007
2004–2010

Application:
F Series
E Series

AP63497



NEW

Actuators

Injection Pressure Regulator (IPR) Valve

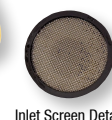
OEM Part Numbers: 3C3Z9C968AA, CM5054

Notes: Without edge filter.

Year Range:
2003–2004

Application:
F Series, Excursion

AP63416



Inlet Screen Detail

Injection Pressure Regulator (IPR) Valve

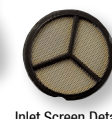
OEM Part Numbers: 5C3Z9C968CA, CM5126

Notes: With edge filter.

Year Range:
2005–2007
2004–2010
2006–2010

Application:
F Series, Excursion
E Series
4.5L LCF

AP63417



Inlet Screen Detail

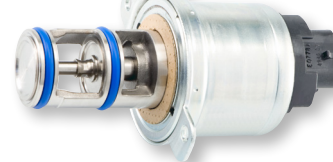
Exhaust Gas Recirculation (EGR) Valve*

OEM Part Numbers: 4C3Z9F452A / ARM, CX2056, CX2467RM

Year Range:
2003–2004

Application:
F Series, Excursion

AP63438



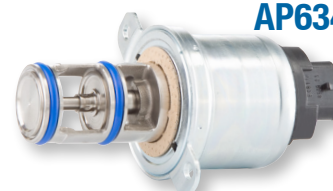
Exhaust Gas Recirculation (EGR) Valve*

OEM Part Numbers: 5C3Z9F452A / ARM, CX2020, CX2466RM

Year Range:
2004½–2007
2004½–2010

Application:
F–250 / F–550, Excursion
E Series

AP63439



6.0L and 4.5L POWER STROKE

Electrical Harness and Repair

AP0021



3 Wire Pigtail

OEM Part Number: 5C3Z12224A

Notes: Fits AP63407 and AP63460 Injection Control Pressure (ICP) Sensors as well as AP63403 and AP63408 Exhaust Back Pressure (EBP) Sensors.

Year Range:

2003–2007
2004–2010
2006–2010

Application:

F Series, Excursion
E Series
4.5L LCF

AP0056



2 Wire Pigtail

Notes: Fits AP63437 Engine Oil/Coolant/Fuel Temperature (EOT/ECT/FT) Sensor.

Year Range:

2003–2007
2004–2010
2006–2010

Application:

F Series, Excursion
E Series
4.5L LCF

AP0030



Injector Harness Connector

Year Range:

2003–2007
2004–2010
2006–2010

Application:

F Series, Excursion
E Series
4.5L LCF

AP0040



G2.8 Injector Connector

Notes: See Technical Bulletin APTB 03/14 for installation instructions.

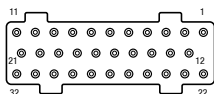
Year Range:

2003–2007
2004–2010
2006–2010

Application:

F Series, Excursion
E Series
4.5L LCF

AP0018



Fuel Injection Control Module (FICM) Connector

Notes: Field data shows identification marks 1456315–6, 1437287–7, or X–3.

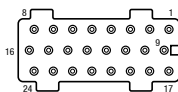
Year Range:

2003–2007
2004–2010
2006–2010

Application:

F Series, Excursion
E Series
4.5L LCF

AP0019



Fuel Injection Control Module (FICM) Connector

Notes: Field data shows identification marks 1456315–2, 1437287–6, or X–2.

Year Range:

2003–2007
2004–2010
2006–2010

Application:

F Series, Excursion
E Series
4.5L LCF

6.0L and 4.5L POWER STROKE

Electrical Harness and Repair *continued*

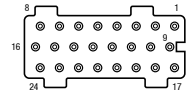
Fuel Injection Control Module (FICM) Connector

Notes: Field data shows identification marks 1456316-1, 1437287-5, or X-1.

Year Range:	Application:
2003-2007	F Series, Excursion
2004-2010	E Series
2006-2010	4.5L LCF



AP0020



Fuel Injection Control Module (FICM) Connector Pigtail

Notes: Replaces AP0018 Fuel Injection Control Module (FICM) Connector. Field data shows identification marks 1456315-6, 1437287-7, or X-3.

Year Range:	Application:
2003-2007	F Series, Excursion
2004-2010	E Series



AP0031

Fuel Injection Control Module (FICM) Connector Pigtail

Notes: Replaces AP0019 Fuel Injection Control Module (FICM) Connector. Field data shows identification marks 1456315-2, 1437287-6, or X-2.

Year Range:	Application:
2003-2007	F Series, Excursion
2004-2010	E Series



AP0032

Fuel Injection Control Module (FICM) Connector Pigtail

Notes: Replaces AP0020 Fuel Injection Control Module (FICM) Connector. Field data shows identification marks 1456316-1, 1437287-5, or X-1.

Year Range:	Application:
2003-2007	F Series, Excursion
2004-2010	E Series



AP0033

2 Wire Pigtail

Notes: Fits AP63416 and AP63417 Injection Pressure Regulator (IPR) Valves and the VGT Solenoid.

Year Range:	Application:
2003-2007	F Series, Excursion
2004-2010	E Series
2006-2010	4.5L LCF



AP0068

6.0L and 4.5L POWER STROKE

Seal and Gasket Kits

AP0002



G2.8 Injector Seal Kit

OEM Part Numbers: 3C3Z9229AA, CM5055

Notes: Includes high-pressure oil seal.

Year Range:

2003–2007

2004–2010

2006–2010

Application:

F Series, Excursion

E Series

4.5L LCF

AP0005



Exhaust Gas Recirculation (EGR) Valve O-ring Kit

OEM Part Number: 3C3Z9P455AB

Year Range:

2003–2007

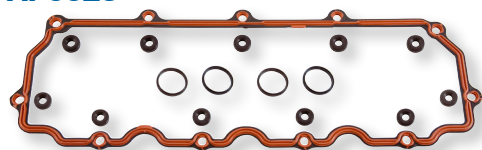
2004–2010

Application:

F Series, Excursion

E Series

AP0023



Valve Cover Gasket

OEM Part Number: 3C3Z6584BA

Year Range:

2003–2007

2004–2010

Application:

F Series, Excursion

E Series

AP0028



Stand Pipe and Front Port Plug Seal Kit

OEM Part Numbers: W302209, W301386, and W301390

Notes: Reseals one side.

Year Range:

2003–2007

2004–2010

2006–2010

Application:

F Series, Excursion

E Series

4.5L LCF

AP0035



Injection Pressure Regulator (IPR) Valve Seal Kit

OEM Part Number: 3C3Z9H529A

Year Range:

2003–2007

2004–2010

2006–2010

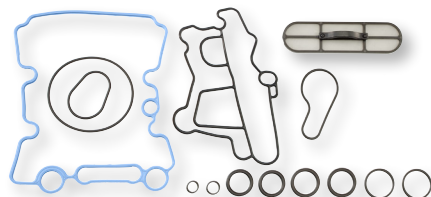
Application:

F Series, Excursion

E Series

4.5L LCF

AP0039



Engine Oil Cooler Gasket Kit

Year Range:

2003–2007

2004–2010

2006–2010

Application:

F Series, Excursion

E Series

4.5L LCF

6.0L and 4.5L POWER STROKE

Seal and Gasket Kits *continued*

Head Gasket Kit

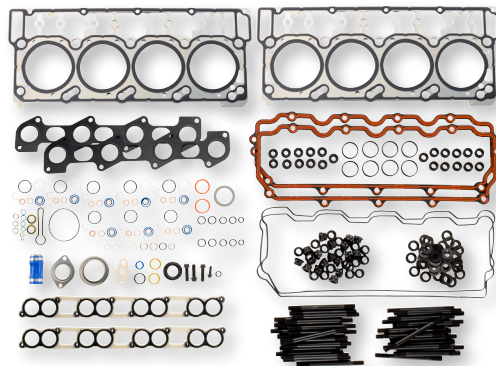
AP0043

Notes: 18 mm dowels.

Year Range:	Application:
2003–2006	F Series, Excursion
2004–2006	E Series

Kit Contents:

- 2 Cylinder Head Gaskets with 18 mm Dowels
- 2 Exhaust Manifold Gaskets
- 2 Rocker Housing Gaskets
- 1 Secondary Fuel Filter Seal Kit
- 4 Fuel Inlet Copper Washers
- 2 Valve Cover Gaskets
- 8 Injector Seal Kits
- 1 Exhaust Gas Recirculation (EGR) Cooler Intake Gasket Kit
- 1 Exhaust Gas Recirculation (EGR) Valve O-ring Kit
- 1 Head Stud Kit
- 2 Stand Pipe and Front Port Plug Seal Kits



Head Gasket Kit

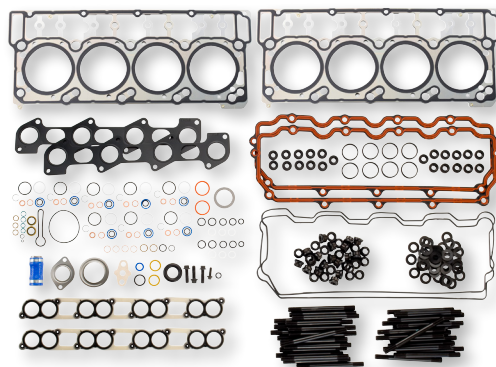
AP0044

Notes: 20 mm dowels.

Year Range:	Application:
2006–2007	F Series, Excursion
2006–2010	E Series

Kit Contents:

- 2 Cylinder Head Gaskets with 20 mm Dowels
- 2 Exhaust Manifold Gaskets
- 2 Rocker Housing Gaskets
- 1 Secondary Fuel Filter Seal Kit
- 4 Fuel Inlet Copper Washers
- 2 Valve Cover Gaskets
- 8 Injector Seal Kits
- 1 Exhaust Gas Recirculation (EGR) Cooler Intake Gasket Kit
- 1 Exhaust Gas Recirculation (EGR) Valve O-ring Kit
- 1 Head Stud Kit
- 2 Stand Pipe and Front Port Plug Seal Kits



High-Pressure Oil Rail Seal Kit

AP0070

Notes: AP0069 High-Pressure Oil Rail Socket required for installation.

Year Range:	Application:
2003–2007	F Series, Excursion
2004–2010	E Series
2006–2010	4.5L LCF



Fuel Pressure Regulator Kit

AP0086

OEM Part Number: 3C3Z9T517AG

Year Range:	Application:
2003–2007	F Series
2004–2010	E Series



6.0L and 4.5L POWER STROKE

Seal and Gasket Kits *continued*

AP63447



Exhaust Gas Recirculation (EGR) Cooler Intake Gasket Kit

OEM Part Numbers: 3C3Z9433BE / BH

Year Range:
2003–2007
2004–2010

Application:
F Series, Excursion
E Series

AP63481



Turbo Installation Kit

OEM Part Number: 3C3Z9T514AG

Year Range:
2004–2007
2004–2010

Application:
F Series, Excursion
E Series

Engine Accessories

AP63430



Fan Clutch

OEM Part Numbers: 4C3Z8A616AA, YB632

Year Range:
2003–2007
2004–2010

Application:
F–250 / F–550, Excursion
E Series

AP63432



Belt Tensioner

OEM Part Number: 3C2Z6B209BA

Notes: Dual alternator configurations.

Year Range:
2003–2007
2004–2010

Application:
F–250 / F–550, Excursion
E Series

AP63448



Belt Tensioner

OEM Part Number: 3C2Z6B209AA

Year Range:
2003–2007
2004–2010

Application:
F–250 / F–550, Excursion
E Series

AP63433



Vacuum Pump–Electronic

OEM Part Numbers: 6C3Z2A451A, 6C3A2A451BA, F81Z2A451BA, 4C3Z2A451BA, BRPV–7

Year Range:
2003–2007

Application:
F–250 / F–550, Excursion

6.0L and 4.5L POWER STROKE

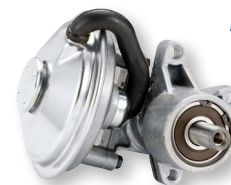
Engine Accessories *continued*

Vacuum Pump—Mechanical

OEM Part Numbers: 4C2Z2A451AA, AC2Z2A451A, BRPV-1 / 11

Year Range: 2004–2010
Application: E Series

AP63703

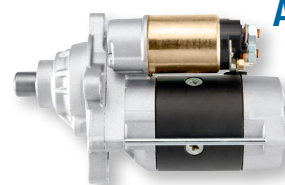


Starter

OEM Part Numbers: 3C3Z11002AA, 3C3U11000AB, 6C2Z11002AA

Year Range: 2003–2007
 2004–2010
Application: F-250 / F-550, Excursion
 E Series

AP83006



Filters

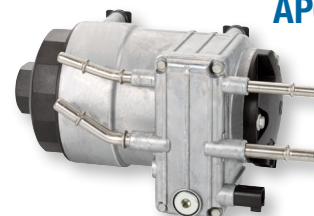
Horizontal Fuel Conditioning Module (HFCM)

OEM Part Numbers: 3C3Z9C407AB, 6C3Z9C407AA, 6C3Z9G282AA, PFB93, PFB101

Notes: Field data indicates that some vehicles built BEFORE 09/15/2003 may have three plug connections and would require a new wiring harness (6C3Z9F759A) for installation.

Year Range: 2003–2007
Application: F-250 / F-550

AP63426



Vertical Fuel Conditioning Module (VFCM)

OEM Part Numbers: 6C2Z9G282AA, PFB98, 9C2Z9G282A, 6C3Z9G282C

Year Range: 2004–2010
Application: E Series

AP63431



Fuel Filter Housing Cap (Racor)

OEM Part Number: 3C3Z9G270AA

Year Range: 2003–2007
 2004–2010
 2006–2010
Application: F-250 / F-550, Excursion
 E Series
 4.5L LCF

PFF31795



Fuel Filter Element Service Kit (Racor)

OEM Part Number: FD4606

Notes: Primary and secondary.

Year Range: 2004–2010
Application: E Series

PFF4606



6.0L and 4.5L POWER STROKE

Filters continued

PFF4616



Fuel Filter Element Service Kit (Racor)

OEM Part Number: FD4604

Notes: Primary and secondary.

Year Range:

2003–2007
2006–2010

Application:

F–250 / F–550, Excursion
4.5L LCF

PFL2016



Oil Filter Element Service Kit (Racor)

OEM Part Number: FL2016

Year Range:

2003–2007
2004–2010

Application:

F Series, Excursion
E Series

RK31821



Oil Filter Cap (Racor)

OEM Part Number: 3C3Z6766CA

Year Range:

2003–2007
2006–2010

Application:

F Series, Excursion
4.5L LCF

RK32138



Oil Filter Cap (Racor)

OEM Part Number: 4C2Z6766BA

Year Range:

2004–2010

Application:

E Series

6.4L POWER STROKE

Injectors

Remanufactured Piezo Injector*

OEM Part Numbers: 8C3Z9E527A, 8C3Z9E527DRM

Notes: Includes injection line.

Year Range: 2008–2010
Application: F–250 / F–550



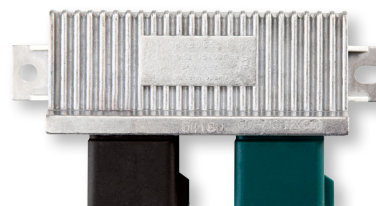
AP64900

Modules

Glow Plug Control Module (GPCM)

OEM Part Numbers: YC3Z12B533AA, DY876

Year Range: 2008–2010
Application: F–250 / F–550



AP63406

Engine Components

Coolant Pump

OEM Part Number: 7C3Z8B552A

Year Range: 2008–2010
Application: F–250 / F–550



AP63472

Exhaust Back Pressure (EBP) Tube

OEM Part Number: 8C3Z9F459A

Year Range: 2008–2010
Application: F–250 / F–550



AP63520



**Indicates products with a core charge.*

6.4L POWER STROKE

Engine Components *continued*

AP63498



Thermostat Kit

OEM Part Numbers: 8C3Z8575D, RT1212

Year Range:
2008–2010

Application:
F–250 / F–550

AP63504



Water Pump

OEM Part Numbers: 8C3Z8501B, PW482

Notes: Includes mounting gasket.

Year Range:
2008–2010

Application:
F–250 / F–550

AP63640



Remanufactured High-Pressure Fuel Pump (HPFP) Kit*

OEM Part Numbers: 8C3Z9A543DRM, 8C3Z9A543B

Notes: Includes pump and installation kit.

Year Range:
2008–2010

Application:
F–250 / F–550

**Indicates products with a core charge.*

6.4L POWER STROKE

Sensors

Engine Speed/Position Sensor

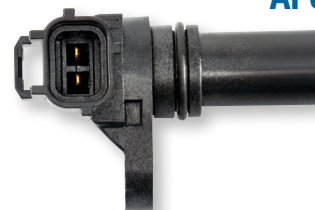
OEM Part Numbers: 3C3Z6C315AA, DY985

Notes: Crankshaft Speed/Position.

Year Range:
2008–2010

Application:
F Series

AP63412



Engine Speed/Position Sensor

OEM Part Numbers: 3C3Z12K073AA, 8C3Z12K073A, DU88

Notes: Camshaft Speed/Position.

Year Range:
2008–2010

Application:
F Series

AP63415



Ambient Air Temperature (AAT) Sensor

OEM Part Numbers: AE5Z12A647A, DY1137

Year Range:
2008–2010

Application:
F–250 / F–550

AP63493



Fuel Rail Pressure Sensor

OEM Part Number: 8C3Z9G756A

Notes: Includes gasket.

Year Range:
2008–2010

Application:
F Series

AP63422



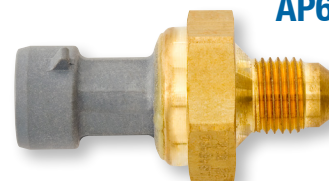
Exhaust Back Pressure (EBP) Sensor

OEM Part Numbers: 7E7Z9J460AA, 8C3Z9J460A, DPFE7, DPFE8

Year Range:
2008–2010

Application:
F Series

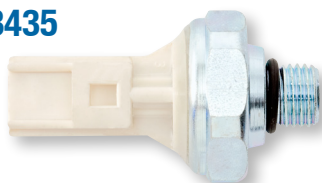
AP63423



6.4L POWER STROKE

Sensors continued

AP63435



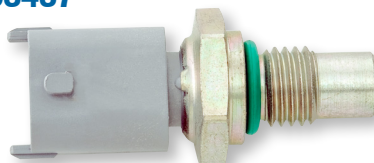
Engine Oil Pressure (EOP) Sensor

OEM Part Numbers: F81Z9278AA, SW5267

Year Range:
2008–2010

Application:
F Series

AP63437



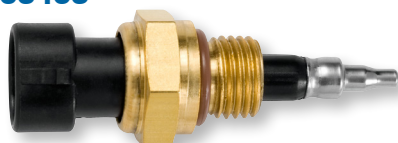
Engine Oil/Coolant/Fuel Temperature (EOT/ECT/FT) Sensor

OEM Part Numbers: 3C3Z10884AA, SW6052

Year Range:
2008–2010

Application:
F Series

AP63463



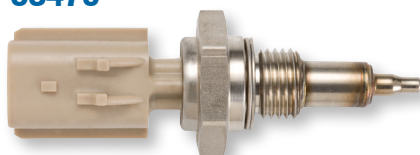
Intake Manifold Air Temperature (IAT) Sensor

OEM Part Numbers: 8C3Z12A697B, DY1112

Year Range:
2008–2010

Application:
F Series

AP63470



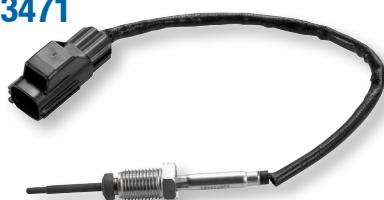
Exhaust Gas Recirculation (EGR) Temperature Sensor–Inlet

OEM Part Number: 8C3Z12B591A

Year Range:
2008–2010

Application:
F Series

AP63471



Exhaust Gas Recirculation (EGR) Temperature Sensor–Outlet

OEM Part Number: 8C3Z12B591E

Year Range:
2008–2010

Application:
F–250 / F–550

AP63473



Diesel Particulate Filter Pressure (DPFP) Sensor

OEM Part Numbers: 8C3Z9J460D, DPFE17

Year Range:
2008–2010

Application:
F–250 / F–550

6.4L POWER STROKE

Sensors *continued*

Mass Air Flow/Intake Manifold Air Temperature (MAF/IAT) Sensor*

OEM Part Numbers: 7C3Z12B579A, AFLS179

Year Range:
2008–2010

Application:
F–250 / F–550



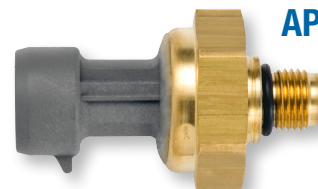
AP63475

Manifold Absolute Pressure (MAP) Sensor

OEM Part Numbers: 8C349F479AA, 8C3Z9F479A, CX2161

Year Range:
2008–2010

Application:
F Series



AP63476

Transmission Fluid Temperature Sensor

OEM Part Number: 9C3Z7H141A

Year Range:
2008–2010

Application:
F Series



AP63497

NEW

Actuators

Exhaust Gas Recirculation (EGR) Valve

OEM Part Number: 8C3Z9D475D

Year Range:
2008–2010

Application:
F Series



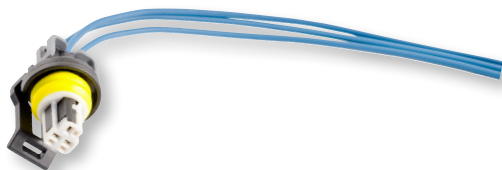
AP63456

**Indicates products with a core charge.*

6.4L POWER STROKE

Electrical Harness and Repair

AP0021



3 Wire Pigtail

OEM Part Number: 5C3Z12224A

Notes: Fits AP63423 Exhaust Back Pressure (EBP) Sensor.

Year Range:
2008–2010

Application:
F Series

AP0056



2 Wire Pigtail

Notes: Fits AP63437 Engine Oil/Coolant/Fuel Temperature (EOT/ECT/FT) Sensor.

Year Range:
2008–2010

Application:
F Series

AP0076



Engine Harness Connector Cover

Year Range:
2008–2010

Application:
F Series

AP63515



Injector Harness

OEM Part Number: 8C3Z9D930AA

Notes: Injector Harness for the right side.

Year Range:
2008–2010

Application:
F–250 / F–550

AP63516



Injector Harness

OEM Part Number: 8C3Z9D930BA

Notes: Injector Harness for the left side.

Year Range:
2008–2010

Application:
F–250 / F–550

Seal and Gasket Kits

AP0027



Injection Line and O–ring Kit

OEM Part Number: 8C3Z9229A

Year Range:
2008–2010

Application:
F Series

6.4L POWER STROKE

Seal and Gasket Kits *continued*

Exhaust Gas Recirculation (EGR) Valve O-ring

OEM Part Number: 8C3Z9D476A

Year Range:
2008–2010

Application:
F Series



AP0042

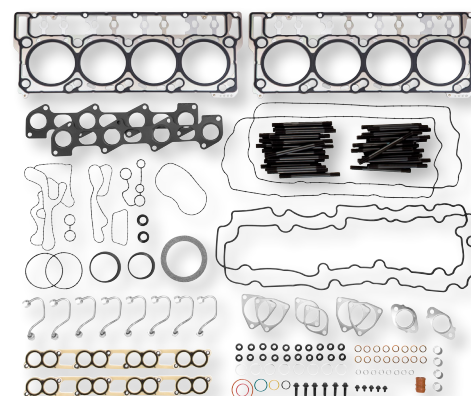
Head Gasket Kit

Year Range:
2008–2010

Application:
F Series

Kit Contents:

- 2 Cylinder Head Gaskets
- 2 Exhaust Manifold Gaskets
- 2 Rocker Housing Gaskets
- 2 Valve Cover Gaskets
- 8 Injector Seal Kits with Injection Lines
- 1 Intake Exhaust Gas Recirculation (EGR) Gasket Kit
- 1 Turbo Gasket Kit
- 1 Oil Cooler Gasket Kit
- 1 Head Stud Kit



AP0064

High-Pressure Fuel Pump (HPFP) Installation Kit

Notes: Installation kit only. If pump is needed see AP63640 Remanufactured High-Pressure Fuel Pump (HPFP) Kit.

Year Range:
2008–2010

Application:
F-250 / F-550



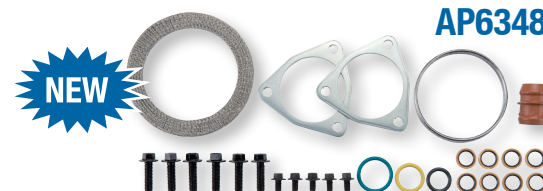
AP0071

Turbo Installation Kit

OEM Part Number: 8C3Z9T514C

Year Range:
2008–2010

Application:
F-250 / F-550



AP63482

6.4L POWER STROKE

Engine Accessories

AP63499



Fan Clutch

OEM Part Numbers: 7C3Z8A616F, YB3125

Notes: Without snow plow package.

Year Range:
2008–2010

Application:
F–250 / F–550

AP63518



Fan Clutch

OEM Part Numbers: 8C3Z8A616S, YB3126

Notes: With snow plow package.

Year Range:
2008–2010

Application:
F–250 / F–550

AP63517



Belt Tensioner

OEM Part Numbers: 7C3Z6B209B, BT91

Notes: Accessory belt tensioner.

Year Range:
2008–2010

Application:
F–250 / F–550

AP63519



Belt Tensioner

OEM Part Numbers: 7C3Z6B209E, BT122

Notes: Primary belt tensioner.

Year Range:
2008–2010

Application:
F–250 / F–550

AP83007



Starter

OEM Part Numbers: 7C3Z11002AA, SA965

Year Range:
2008–2010

Application:
F Series

6.4L POWER STROKE

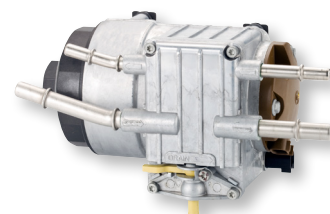
Filters

Horizontal Fuel Conditioning Module (HFCM)

OEM Part Numbers: 8C3Z9G282A, PFB95

Year Range:
2008–2010

Application:
F–250 / F–550



AP63450

Fuel Filter Element Service Kit (Racor)

OEM Part Numbers: FD4609, PFF5550

Notes: Primary and secondary.

Year Range:
2008–2010

Application:
F–250 / F–550



PFF4617

Oil Filter Element Service Kit (Racor)

OEM Part Number: FL2016

Year Range:
2008–2010

Application:
F Series



PFL2016

Oil Filter Cap (Racor)

OEM Part Number: 3C3Z6766CA

Year Range:
2008–2010

Application:
F Series

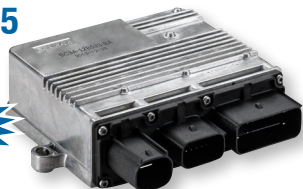


RK31821

6.7L POWER STROKE

Modules

AP63525



Glow Plug Control Unit

OEM Part Numbers: BC3Z12B533A / B, DY1261

Year Range:
2011–2015

Application:
F Series

Fuel System Components

AP63527



Fuel Transfer Pump

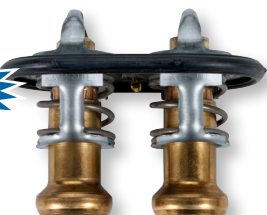
OEM Part Numbers: BC3Z9G282E, PFB103

Year Range:
2012–2015

Application:
F Series

Engine Components

AP63540



Thermostat

OEM Part Numbers: BC3Z8575A / D, RT1205, RT1231

Notes: Main engine thermostat.

Year Range:
2011–2015

Application:
F Series

AP63541



Thermostat

OEM Part Numbers: BC3Z8575B, RT1206

Notes: High temperature right side thermostat.

Year Range:
2011–2015

Application:
F Series

AP63542



Thermostat

OEM Part Numbers: BC3Z8575C, RT1207

Notes: Low temperature left side thermostat.

Year Range:
2011–2015

Application:
F Series

6.7L POWER STROKE

Engine Components *continued*

Water Pump

OEM Part Numbers: BC3Z8501B, PW503

Notes: Secondary water pump with dual alternators.

Year Range:
2011–2015

Application:
F Series



AP63505

NEW

Water Pump

OEM Part Numbers: BC3Z8501C, PW504

Notes: Secondary water pump with single alternator.

Year Range:
2011–2015

Application:
F Series



AP63506

NEW

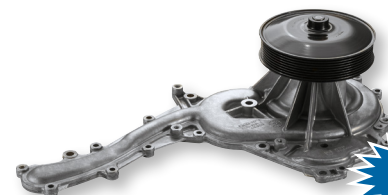
Water Pump

OEM Part Numbers: BC3Z8501A, PW502

Notes: Primary water pump.

Year Range:
2011–2015

Application:
F Series



AP63507

NEW

Sensors

Ambient Air Temperature (AAT) Sensor

OEM Part Numbers: AU5Z12A647B, DY1160

Year Range:
2011–2015

Application:
F Series



AP63545

NEW

Camshaft Position (CMP) Sensor

OEM Part Numbers: BC3Z12K073A, DU92

Year Range:
2011–2015

Application:
F Series



AP63535

NEW

6.7L POWER STROKE

Sensors *continued*

AP63534



NEW

Crankshaft Position (CKP) Sensor

OEM Part Numbers: BC3Z6C315A, DY1148

Year Range:
2011–2015

Application:
F Series

AP63528



NEW

Diesel Particulate Filter Pressure (DPFP) Sensor

OEM Part Numbers: DC3Z9J460D, DPFE24

Year Range:
2013–2015

Application:
F Series

AP63493



NEW

Ambient Air Temperature (AAT) Sensor

OEM Part Numbers: AE5Z12A647A, DY1137

Year Range:
2011–2014

Application:
F Series

AP63539



NEW

Engine Oil Pressure (EOP) Sensor

OEM Part Numbers: 6U5Z9278D, SW6357

Year Range:
2011–2015

Application:
F Series

AP63526



NEW

Exhaust Back Pressure (EBP) Sensor

OEM Part Numbers: BC3Z9J460B / E, DPFE22

Notes: Wide frame chassis, located in the Diesel Particulate Filter (DPF).

Year Range:
2011–2015

Application:
F–350 / F–550

AP63537



NEW

Exhaust Back Pressure/Diesel Particulate Filter Pressure (EBP/DPFP) Sensor

OEM Part Numbers: BC3Z9J460D, DPFE21

Notes: Narrow frame chassis, located in the Diesel Particulate Filter (DPF).

Year Range:
2011–2015

Application:
F Series

6.7L POWER STROKE

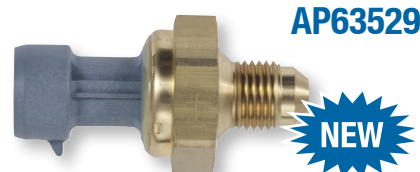
Sensors *continued*

Exhaust Gas Recirculation (EGR) Pressure Sensor

OEM Part Numbers: BC3Z9J460C, DPFE20

Year Range:
2011–2015

Application:
F Series



NEW

Intake Air/Charge Air Cooler Temperature (IAT/CACT) Sensor

OEM Part Numbers: 4R8Z12A697A, DY1146

Year Range:
2011–2015

Application:
F Series



NEW

Manifold Absolute Pressure (MAP) Sensor

OEM Part Numbers: BC3Z9F479B, CX2432

Year Range:
2011–2015

Application:
F Series



NEW

Mass Air Flow (MAF) Sensor*

OEM Part Numbers: BC3Z12B579A, AFLS166

Year Range:
2011–2015

Application:
F Series



NEW

Reductant Fluid Level Sensor

OEM Part Number: BC3Z5J225L

Year Range:
2011–2015

Application:
F–250 / F–550



NEW

Transmission Fluid Temperature Sensor

OEM Part Number: BC3Z7H141A

Year Range:
2011–2015

Application:
F Series



NEW

**Indicates products with a core charge.*

6.7L POWER STROKE

Actuators

AP63522



NEW

Exhaust Gas Recirculation (EGR) Valve

OEM Part Numbers: BC3Z9D475C, CX2404

Notes: Used on narrow frame cab chassis models.

Year Range:
2011–2015

Application:
F–350 / F–550

AP63523



NEW

Exhaust Gas Recirculation (EGR) Valve

OEM Part Numbers: BC3Z9D475D, CX2405

Notes: Used on wide frame pickup chassis models.

Year Range:
2011–2015

Application:
F–250 / F–350

Electrical Harness and Repair

AP0068



2 Wire Pigtail

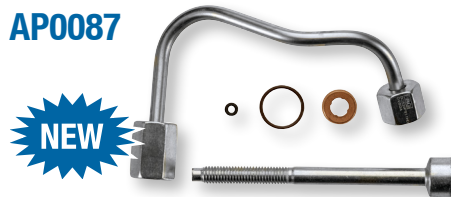
Notes: Fits the VGT Solenoid.

Year Range:
2011–2012

Application:
F–250 / F–550

Seal and Gasket Kits

AP0087



NEW

Injection Line and O-ring Kit

OEM Part Numbers: BC3Z9229A, CM5191

Notes: For cylinders 1, 2, 7, 8.

Year Range:
2011–2015

Application:
F Series

AP0088



NEW

Injection Line and O-ring Kit

OEM Part Numbers: BC3Z9229B, CM5192

Notes: For cylinders 3, 4, 5, 6.

Year Range:
2011–2015

Application:
F Series

6.7L POWER STROKE

Engine Accessories

Alternator*

OEM Part Numbers: BC3Z10346A /D, GL8754, GL992

Notes: Bottom alternator on dual alternator chassis.

Year Range:
2011–2015

Application:
F Series



AP83009

NEW

Alternator*

OEM Part Numbers: BC3Z10346B, GL993

Notes: Single alternator chassis.

Year Range:
2011–2015

Application:
F Series



AP83010

NEW

Alternator*

OEM Part Numbers: BC3Z10346C, GL994

Notes: Top alternator on dual alternator chassis.

Year Range:
2011–2015

Application:
F Series



AP83011

NEW

Belt Tensioner

OEM Part Numbers: BC3Z6B209A / B, BT131

Year Range:
2011–2015

Application:
F Series



AP63538

NEW

Vacuum Pump

OEM Part Numbers: BC3Z2A451A / B, BRPV–8 / 22

Year Range:
2011–2015

Application:
F Series



AP63725

NEW

Fan Clutch

OEM Part Numbers: BC3Z8A616CC, YB3148

Year Range:
2011–2015

Application:
F Series



AP63536

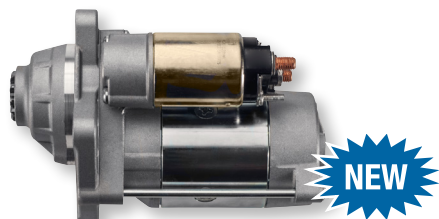
NEW

**Indicates products with a core charge.*

6.7L POWER STROKE

Engine Accessories continued

AP83008



Starter*

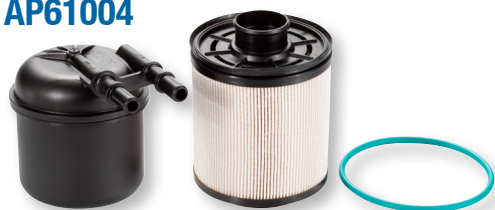
OEM Part Numbers: BC3Z11002A, SA1004

Year Range:
2011–2015

Application:
F Series

Filters

AP61004



Fuel Filter Element Service Kit

OEM Part Number: BC3Z9N184B

Notes: Primary and secondary.

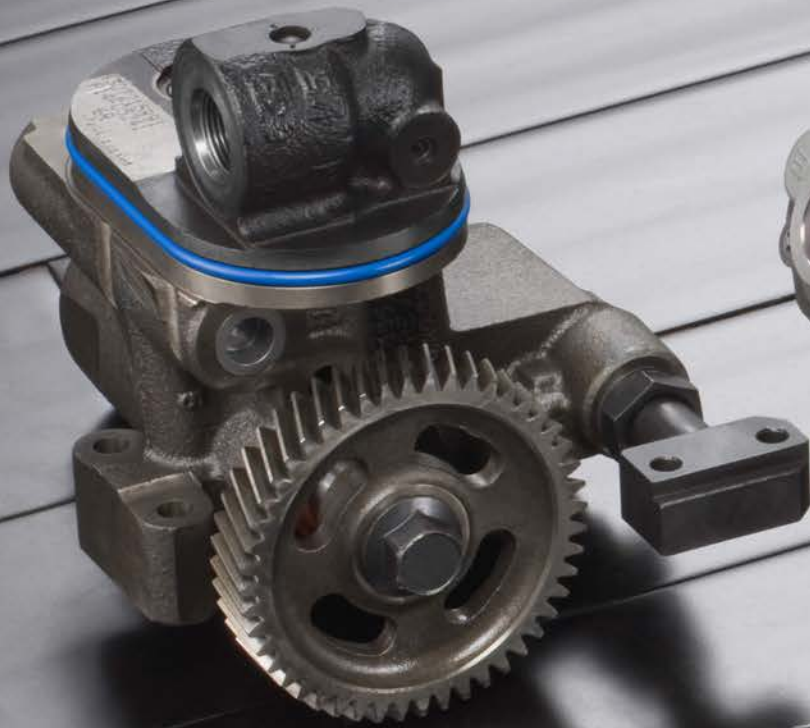
Year Range:
2011–2014

Application:
F–250 / F–550

***Visit alliantpower.com
for Additional Information
Such as Technical Bulletins and
New Product Announcements***

**Indicates products with a core charge.*

***Visit alliantpower.com
to Find Your Nearest
Service Dealer***



NAVISTAR



T444E

Injectors

AP63800AA



HEUI Injector*

OEM Part Numbers: 1816187C3, 1818259C2, 1821752C1, 1821836C3, 1822800C95, 1822801C91

Year Range:
1994–1996

Application:
T444E

ESN Range:
500 to 460,194

AP63801AB



HEUI Injector*

OEM Part Numbers: 1822803C1, 1823561C1, 1824582C94, 1824583C97, 1825125C1, 1825126C1

Notes: Prime (Split Shot) Injector.

Year Range:
1997–1999

Application:
T444E

ESN Range:
460,195 to 843,989

AP63802AC



HEUI Injector*

OEM Part Numbers: 1824474C2, 1822890C1, 1824472C1, 1824473C2, 1824455C94, 1824456C96

Year Range:
1994–1996

Application:
T444E: High Output 210 HP (HT) to 230 HP

AP63803AD



HEUI Injector*

OEM Part Numbers: 1823751C91, 1831487C92, 1831488C1, 1831489C12, 1831550C14, 1831551C13

Notes: Prime (Split Shot) Injector. Recommend replacing AD Injector in #8 cylinder location with AE Injector to eliminate "cackle." This became standard production in 2002.

Year Range:
1999–2003

Application:
T444E

ESN Range:
843,990 to 5,999,999

AP63804AE



HEUI Injector*

OEM Part Numbers: 1833639C1, 1833640C1, 1833644C1, 1833645C1, 1833646C92, 1833647C91

Notes: Long Lead (LL or blue harness connector) Injector. Used in #8 cylinder location to eliminate "cackle."

Year Range:
2002–2003

Application:
T444E

ESN Range:
1,313,828 to 5,999,999

* Indicates products with a core charge.

Fuel System Components

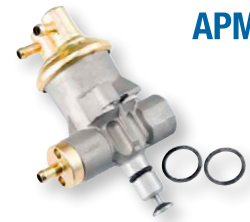
Fuel Transfer Pump—Mechanical

OEM Part Numbers: 1824415C93, 1826794C93

Notes: Includes two banjo gaskets.

Year Range:
1994–2003

Application:
T444E



APM61067

Fuel Filter Heater Element

OEM Part Number: 1825186C91

Year Range:
1994–1998

Application:
T444E



AP63409

Fuel Filter Heater Element

OEM Part Number: 1831196C92

Year Range:
1999–2003

Application:
T444E



AP63410

Engine Components

HEUI Injector Sleeve—Brass

OEM Part Number: 1814376C1

Year Range:
1994–2003

Application:
T444E



AP63411

Engine Oil Cooler

OEM Part Number: 1815904C2

Notes: Requires AP0004 Engine Oil Cooler O-ring and Gasket Kit for installation.

Year Range:
1994–2003

Application:
T444E



AP63452

Water Pump

OEM Part Numbers: 1831676C92, 1889249C91

Notes: Includes mounting gasket and plugs.

Year Range:
1994–2003

Application:
T444E



AP63581

T444E

Engine Components *continued*

HP004X



Remanufactured High-Pressure Oil Pump (Bosch)

OEM Part Numbers: 1825247C91, 1825260C91, 1825271C93, 2503701C91

Notes: Includes mounting gasket.

Year Range:
See ESN

Application:
T444E

ESN Range:
5,500 to 216,543

HP005X



Remanufactured High-Pressure Oil Pump (Bosch)

OEM Part Numbers: 1825248C91, 1825259C91, 2503703C91

Notes: Includes mounting gasket.

Year Range:
See ESN

Application:
T444E

ESN Range:
216,544 to 661,894

HP007X



Remanufactured High-Pressure Oil Pump (Bosch)

OEM Part Numbers: 1830857C91, 2503704C91

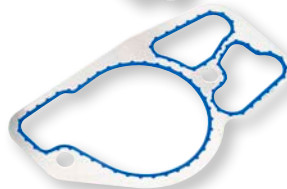
Notes: Includes mounting gasket.

Year Range:
See ESN

Application:
T444E

ESN Range:
661,895 to 843,989

HP008X



Remanufactured High-Pressure Oil Pump (Bosch)

OEM Part Numbers: 1831449C91, 2589446C91

Notes: Includes mounting gasket.

Year Range:
See ESN

Application:
T444E

ESN Range:
843,990 to End

Sensors

AP63491



Camshaft Position (CMP) Sensor

OEM Part Number: 1876736C91

Year Range:
1994–1996

Application:
T444E

NEW

Sensors continued

Camshaft Position (CMP) Sensor

OEM Part Numbers: 1825899C93, 1876735C91

Year Range: 1997–2003
Application: T444E

AP63400

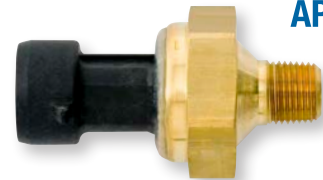


Exhaust Back Pressure (EBP) Sensor

OEM Part Number: 1850353C1

Year Range: 1997–2002
Application: T444E

AP63403

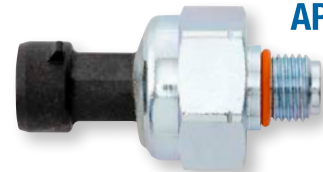


Injection Control Pressure (ICP) Sensor

OEM Part Number: 1807329C92

Year Range: 1994–2003
Application: T444E

AP63418



Actuators

Injection Pressure Regulator (IPR) Valve

OEM Part Numbers: 1824982C91, 1833798C91, 1841279C91

Notes: With edge filter.

Year Range: See ESN
Application: T444E
ESN Range: 5,500 to 216,543

AP63401



Injection Pressure Regulator (IPR) Valve

OEM Part Numbers: 1829856C91, 1836412C91, 1841086C91, 1841217C91

Notes: Without edge filter.

Year Range: See ESN
Application: T444E
ESN Range: 216,544 to End

AP63402



Glow Plug Relay

OEM Part Numbers: 1826634C94, 1831646C1

Year Range: 1994–2003
Application: T444E

AP63405



T444E

Electrical Harness and Repair

AP0009



Valve Cover Harness Connector Repair Kit

Notes: Repairs AP0016 Valve Cover Gasket Connector Pigtail.

Year Range:
1998–2003

Application:
T444E

AP0010



Valve Cover Harness Connector Repair Kit

Notes: Repairs AP0015 Valve Cover Gasket Connector Pigtail.

Year Range:
1994–1997

Application:
T444E

AP0015

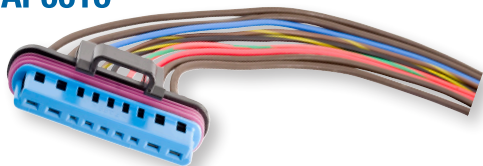


Valve Cover Gasket Connector Pigtail

Year Range:
1994–1997

Application:
T444E

AP0016



Valve Cover Gasket Connector Pigtail

Year Range:
1998–2003

Application:
T444E

AP0021



3 Wire Pigtail

Notes: Fits AP63418 Injection Control Pressure (ICP) Sensor and AP63403 Exhaust Back Pressure (EBP) Sensor.

Year Range:
1994–2003

Application:
T444E

AP0068



2 Wire Pigtail

Notes: Fits AP63401 and AP63402 Injection Pressure Regulator (IPR) Valves and all HEUI A Injectors.

Year Range:
1994–2003

Application:
T444E

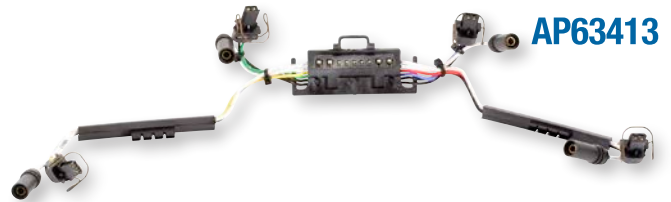
Electrical Harness and Repair *continued*

Internal Injector Harness

OEM Part Number: 1830844C93

Notes: Use with AP0014 Valve Cover Gasket Kit.

Year Range: 1998–2003
Application: T444E



AP63413

Internal Injector Harness

OEM Part Number: 1815923C92

Notes: Use with AP0013 Valve Cover Gasket Kit.

Year Range: 1994–1997
Application: T444E



AP63414

Seal and Gasket Kits

HEUI Injector Seal Kit

OEM Part Number: 1833564C92

Year Range: 1994–2003
Application: T444E

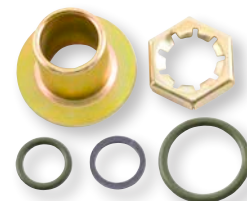


AP0001

Injection Pressure Regulator (IPR) Valve Seal Kit

OEM Part Number: 1825806C91

Year Range: 1994–2003
Application: T444E



AP0003

Engine Oil Cooler O-ring and Gasket Kit

Year Range: 1994–2003
Application: T444E



AP0004

High-Pressure Oil Pump Seal Kit

Year Range: 1994–2003
Application: T444E



AP0011

T444E

Seal and Gasket Kits *continued*

AP0013



Valve Cover Gasket Kit

OEM Part Number: 1818350C2

Notes: Use with AP63414 Internal Injector Harness. Package of two.

Year Range:
1994–1997

Application:
T444E

AP0014



Valve Cover Gasket Kit

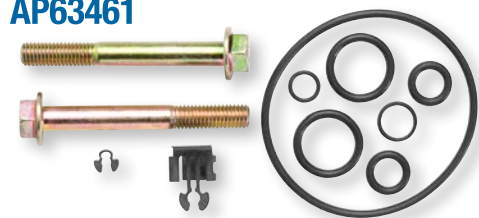
OEM Part Number: 1826703C1

Notes: Use with AP63413 Internal Injector Harness. Package of two.

Year Range:
1998–2003

Application:
T444E

AP63461



Turbo Installation Kit

OEM Part Number: 1831658C91

Year Range:
1999–2003

Application:
T444E

Filters

PFF4595



Fuel Filter Element Service Kit (Racor)

OEM Part Number: 1822631C91

Year Range:
1994–2003

Application:
T444E

RK31019



Fuel Filter Top Cover (Racor)

Year Range:
1994–2003

Application:
T444E

VT365, VT275, MAXXFORCE 5

Injectors

Remanufactured G2.8 Injector*

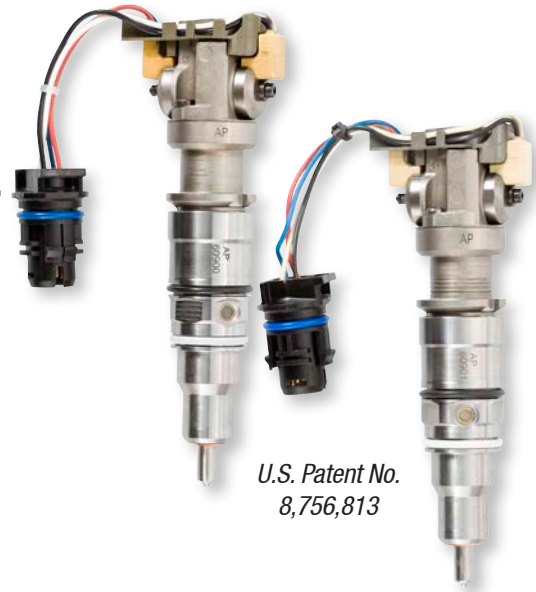
OEM Part Numbers: 1843089C91, 1843481C95, 1845879C91, 1878281C92, 1878282C91

Year Range: 2002½–2003
Application: VT365

Remanufactured G2.8 Injector*

OEM Part Numbers: 1844751C2, 1845150C92, 1846692C92, 1877748C1, 1878284C91, 1878285C91, 1879998C91

Year Range: 2004–2006
2006
2007–2010
Application: VT365
VT275
MaxxForce 5



AP60900

AP60901

U.S. Patent No.
8,756,813

Fuel System Components

Fuel Filter Heater Element

OEM Part Number: 1831196C92

Year Range: 2003–2007
Application: VT365



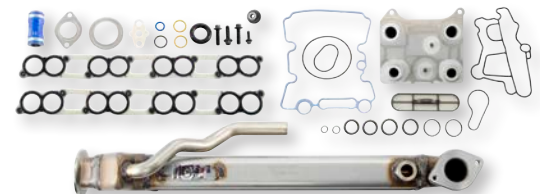
AP63410

Engine Components

Oil Cooler/Exhaust Gas Recirculation (EGR) Cooler Kit*

Notes: Includes AP63451 Engine Oil Cooler Kit and AP63446 Exhaust Gas Recirculation (EGR) Cooler Kit. Core is required only on the Exhaust Gas Recirculation (EGR) Cooler.

Year Range: 2004–2007
Application: VT365



AP63445

* Indicates products with a core charge.

VT365, VT275, MAXXFORCE 5

Engine Components *continued*

AP63446



Exhaust Gas Recirculation (EGR) Cooler Kit*

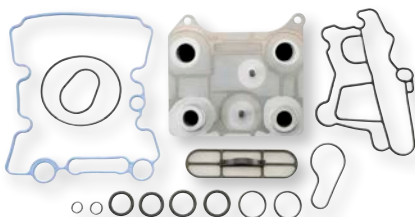
OEM Part Number: 1845145C99

Notes: Includes AP63447 Exhaust Gas Recirculation (EGR) Cooler Intake Gasket Kit.

Year Range:
2004–2007

Application:
VT365

AP63451



Engine Oil Cooler Kit

OEM Part Number: 1886511C93

Notes: Includes AP0039 Engine Oil Cooler Gasket Kit.

Year Range:
2003–2007
2006
2007–2010

Application:
VT365
VT275
MaxxForce 5

AP63583



Water Pump

OEM Part Number: 1845002C91

Notes: Includes mounting gasket.

Year Range:
2002–2007

Application:
VT365

AP63503



Water Pump

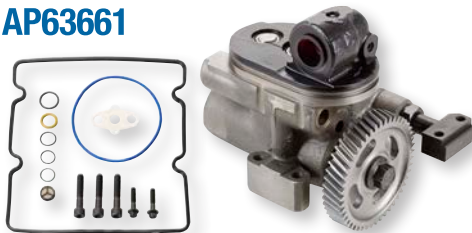
OEM Part Number: 5010118R91

Notes: Includes mounting gasket.

Year Range:
2006
2007–2010

Application:
VT275
MaxxForce 5

AP63661



Remanufactured High-Pressure Oil Pump*

OEM Part Numbers: 1882919C92, 1878865C91

Notes: Includes seal kit.

Year Range:
2004½–2007

Application:
VT365

VT365, VT275, MAXXFORCE 5

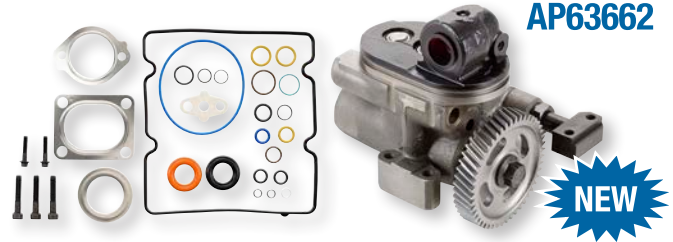
Engine Components *continued*

Remanufactured High-Pressure Oil Pump*

OEM Part Numbers: 4307325R91, 1884357C92

Year Range:
2006

Application:
VT275



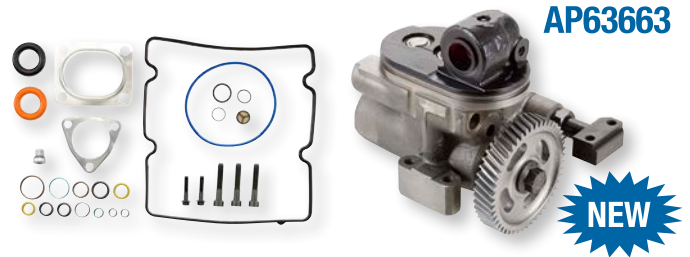
AP63662

Remanufactured High-Pressure Oil Pump*

OEM Part Numbers: 4307327R91, 1880313C94

Year Range:
2007–2010

Application:
MaxxForce 5



AP63663

Remanufactured High-Pressure Oil Pump (Bosch)

OEM Part Number: 1838828C91

Notes: Includes seal kit.

Year Range:
2003–2004

Application:
VT365



HP032X

Sensors

Engine Speed/Position Sensor

OEM Part Number: 1828345C91

Notes: Crankshaft Speed/Position.

Year Range:
2003–2007
2006
2007–2010

Application:
VT365
VT275
MaxxForce 5



AP63412

Engine Speed/Position Sensor

OEM Part Number: 1835985C92

Notes: Camshaft Speed/Position.

Year Range:
2003–2007
2006
2007–2010

Application:
VT365
VT275
MaxxForce 5



AP63415

* Indicates products with a core charge.

VT365, VT275, MAXXFORCE 5

Sensors *continued*

AP63435

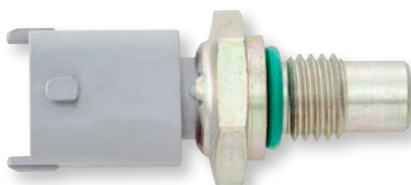


Engine Oil Pressure (EOP) Sensor

OEM Part Number: 1831259C91

Year Range:	Application:
2006	VT275
2007–2010	MaxxForce 5

AP63437

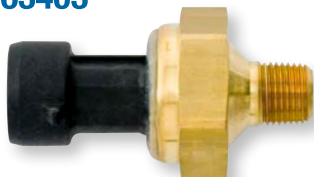


Engine Oil/Coolant/Fuel Temperature (EOT/ECT/FT) Sensor

OEM Part Number: 1836537C91

Year Range:	Application:
2003–2007	VT365
2006	VT275
2007–2010	MaxxForce 5

AP63403



Exhaust Back Pressure (EBP) Sensor

OEM Part Number: 1850353C1

Year Range:	Application:
2003–2004	VT365

AP63408



Exhaust Back Pressure (EBP) Sensor

OEM Part Number: 1850352C2

Year Range:	Application:
2005–2007	VT365

AP63423



Exhaust Back Pressure (EBP) Sensor

OEM Part Number: 1846480C2

Year Range:	Application:
2007–2010	MaxxForce 5

AP63407



Injection Control Pressure (ICP) Sensor

OEM Part Number: 1845274C92

Notes: Mounts below turbo.

Year Range:	Application:
2003–2004	VT365

VT365, VT275, MAXXFORCE 5

Sensors *continued*

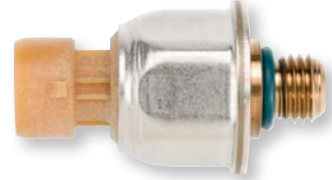
Injection Control Pressure (ICP) Sensor

OEM Part Numbers: 1845428C92, 1845427C2

Notes: Mounts on passenger side valve cover.

Year Range:	Application:
2004–2007	VT365
2006	VT275
2007–2010	MaxxForce 5

AP63460

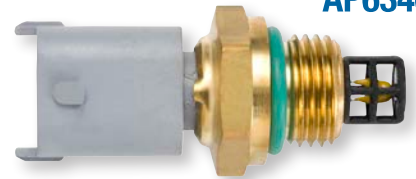


Intake Manifold Air Temperature (IAT) Sensor

OEM Part Number: 1836539C91

Year Range:	Application:
2003–2007	VT365
2006	VT275

AP63462

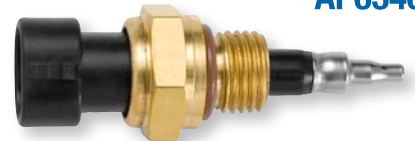


Intake Manifold Air Temperature (IAT) Sensor

OEM Part Number: 1875838C91

Year Range:	Application:
2007–2010	MaxxForce 5

AP63463

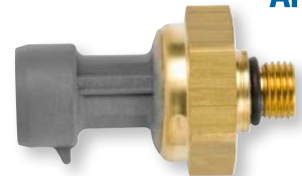


Manifold Absolute Pressure (MAP) Sensor

OEM Part Number: 1846481C92

Year Range:	Application:
2007–2010	MaxxForce 5

AP63476



*For the Most Up To Date
Product Information Visit
alliantpower.com*

VT365, VT275, MAXXFORCE 5

Actuators

AP63416



Injection Pressure Regulator (IPR) Valve

OEM Part Number: 1839437C95

Notes: Without edge filter.

Year Range:
2003–2004

Application:
VT365

AP63417



Injection Pressure Regulator (IPR) Valve

OEM Part Number: 1846057C1

Notes: With edge filter.

Year Range:
2005–2007
2006
2007–2010

Application:
VT365
VT275
MaxxForce 5

AP63438



Exhaust Gas Recirculation (EGR) Valve*

OEM Part Number: 1846491C91

Year Range:
2002½–2003

Application:
VT365

AP63459



Exhaust Gas Recirculation (EGR) Valve

OEM Part Number: 1846296C91

Year Range:
2004–2006

Application:
VT365

AP63479



Glow Plug Relay

OEM Part Number: 1840903C91

Year Range:
2003–2007
2006

Application:
VT365
VT275

* Indicates products with a core charge.

VT365, VT275, MAXXFORCE 5

Electrical Harness and Repair

3 Wire Pigtail

AP0021

Notes: Fits AP63407 and AP63460 Injection Control Pressure (ICP) Sensors, AP63403, AP63408, and AP63423 Exhaust Back Pressure (EBP) Sensors, as well as AP63476 Manifold Absolute Pressure (MAP) Sensor.

Year Range:	Application:
2003–2007	VT365
2006	VT275
2007–2010	MaxxForce 5



2 Wire Pigtail

AP0056

Notes: Fits AP63437 Engine Oil/Coolant/Fuel Temperature (EOT/ECT/FT) Sensor.

Year Range:	Application:
2003–2007	VT365
2006	VT275
2007–2010	MaxxForce 5



Injector Harness Connector

AP0030

Year Range:	Application:
2003–2007	VT365
2006	VT275
2007–2010	MaxxForce 5



G2.8 Injector Connector

AP0040

Notes: See Technical Bulletin APTB 03/14 for installation instructions.

Year Range:	Application:
2003–2007	VT365
2006	VT275
2007–2010	MaxxForce 5

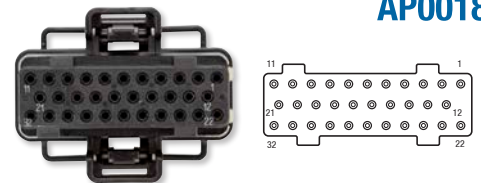


Fuel Injection Control Module (FICM) Connector

AP0018

Notes: Field data shows identification marks 1456315–6, 1437287–7, or X–3.

Year Range:	Application:
2003–2007	VT365
2006	VT275

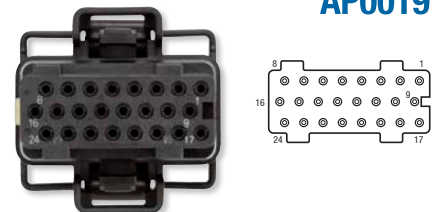


Fuel Injection Control Module (FICM) Connector

AP0019

Notes: Field data shows identification marks 1456315–2, 1437287–6, or X–2.

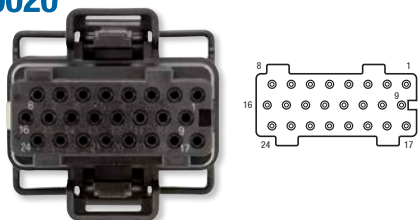
Year Range:	Application:
2003–2007	VT365
2006	VT275



VT365, VT275, MAXXFORCE 5

Electrical Harness and Repair *continued*

AP0020



Fuel Injection Control Module (FICM) Connector

Notes: Field data shows identification marks 1456316-1, 1437287-5, or X-1.

Year Range:

2003-2007
2006

Application:

VT365
VT275

AP0068



2 Wire Pigtail

Notes: Fits AP63416 and AP63417 Injection Pressure Regulator (IPR) Valves and the VGT Solenoid.

Year Range:

2003-2007
2006
2007-2010

Application:

VT365
VT275
MaxxForce 5

Seal and Gasket Kits

AP0002



G2.8 Injector Seal Kit

OEM Part Number: 1843682C91

Notes: Includes high-pressure oil seal.

Year Range:

2002½-2007
2006
2007-2010

Application:

VT365
VT275
MaxxForce 5

AP0005



Exhaust Gas Recirculation (EGR) Valve O-ring Kit

OEM Part Number: 1840778C91

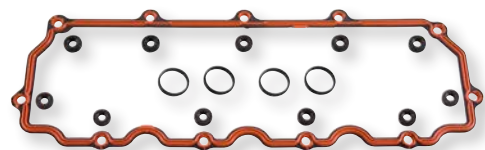
Year Range:

2003-2004

Application:

VT365

AP0023



Valve Cover Gasket

OEM Part Number: 1838250C1

Year Range:

2003-2007

Application:

VT365

VT365, VT275, MAXXFORCE 5

Seal and Gasket Kits *continued*

Stand Pipe and Front Port Plug Seal Kit

AP0028

Notes: Reseals one side.

Year Range:	Application:
2003–2007	VT365
2006	VT275
2007–2010	MaxxForce 5



Injection Pressure Regulator (IPR) Valve Seal Kit

AP0035

OEM Part Number: 1888696C93

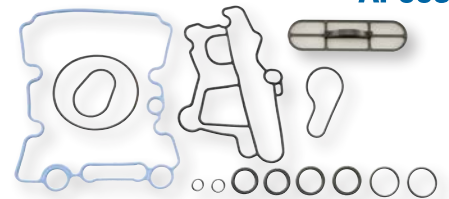
Year Range:	Application:
2003–2007	VT365
2006	VT275
2007–2010	MaxxForce 5



Engine Oil Cooler Gasket Kit

AP0039

Year Range:	Application:
2003–2007	VT365
2006	VT275
2007–2010	MaxxForce 5



Exhaust Gas Recirculation (EGR) Valve Seal Kit

AP0057

OEM Part Number: 1858088C92

Year Range:	Application:
2004–2006	VT365



High-Pressure Oil Rail Seal Kit

AP0070

Notes: AP0069 High-Pressure Oil Rail Socket required for installation.

Year Range:	Application:
2003–2007	VT365
2006	VT275
2007–2010	MaxxForce 5



VT365, VT275, MAXXFORCE 5

Seal and Gasket Kits *continued*

AP63447



Exhaust Gas Recirculation (EGR) Cooler Intake Gasket Kit

OEM Part Number: 1840702C97

Year Range:
2003–2007

Application:
VT365

AP63481



Turbo Installation Kit

OEM Part Number: 1840053C97

Year Range:
2004–2007

Application:
VT365

Filters

PFF31795



Fuel Filter Housing Cap (Racor)

OEM Part Number: 1843057C92

Year Range:
2006
2007–2010

Application:
VT275
MaxxForce 5

PFF4616



Fuel Filter Element Service Kit (Racor)

Notes: Primary and secondary.

Year Range:
2006
2007–2010

Application:
VT275
MaxxForce 5

PFL2016



Oil Filter Element Service Kit (Racor)

Year Range:
2003–2007

Application:
VT365

VT365, VT275, MAXXFORCE 5

Filters continued

Oil Filter Cap (Racor)

OEM Part Number: 1840754C91

Year Range:	Application:
2003–2007	VT365
2006	VT275
2007–2010	MaxxForce 5



RK31821

Fuel Filter Element Service Kit (Racor)

Year Range:	Application:
2003–2007	VT365



PFF4596

Fuel Filter Top Cover (Racor)

Year Range:	Application:
2003–2007	VT365



RK31449

***All Alliant Power Products
are Backed with a 13–Month,
Unlimited Mileage Warranty***

MAXXFORCE 7

Injectors

AP64900



Remanufactured Piezo Injector*

OEM Part Numbers: 1873422C93, 4307381R91, 4307369R91, 5010359R93

Notes: Pre-2010 emission engines. Includes injection line.

Year Range:	Application:	ESN Range:
2007-2010	MaxxForce 7	434,544 to 5,300,001

AP64901



Remanufactured Piezo Injector*

OEM Part Numbers: 1883110C1, 1883111C92, 1899239C92

Notes: Post 2010 emission engines. Includes injection line.

Year Range:	Application:	ESN Range:
2010-2014	MaxxForce 7	5,300,002 to End

Engine Components

AP63641



Remanufactured High-Pressure Fuel Pump (HPFP) Kit*

OEM Part Numbers: 4307291R91, 1876529C98, 1855860C94

Notes: Pre-2010 emission engines. Includes pump and installation kit.

Year Range:	Application:
2007-2010	MaxxForce 7



Engine Components *continued*

Remanufactured High-Pressure Fuel Pump (HPFP) Kit*

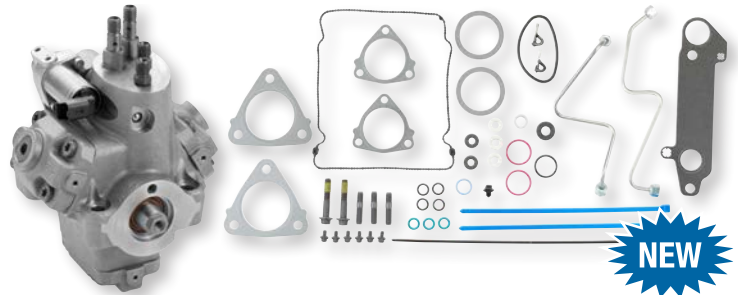
AP63642

OEM Part Number: 7080839C92

Notes: Post 2010 emission engines. Includes pump and installation kit.

Year Range:
2010–2014

Application:
MaxxForce 7



NEW

Fuel Supply Hose

AP63480

OEM Part Number: 7081021C1

Notes: Install in engines built BEFORE 04/06/2011.

Year Range:
2010–2014

Application:
MaxxForce 7



NEW

Sensors

Engine Speed/Position Sensor

AP63412

OEM Part Number: 1828345C91

Notes: Crankshaft Speed/Position.

Year Range:
2007–2014

Application:
MaxxForce 7



Engine Speed/Position Sensor

AP63415

OEM Part Number: 1835985C92

Notes: Camshaft Speed/Position.

Year Range:
2007–2014

Application:
MaxxForce 7



* Indicates products with a core charge.

MAXXFORCE 7

Sensors *continued*

AP63422



Fuel Rail Pressure Sensor

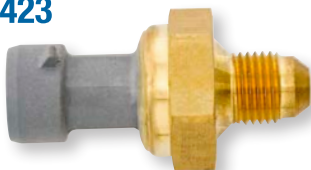
OEM Part Number: 1873400C92

Notes: Includes gasket.

Year Range:
2007–2014

Application:
MaxxForce 7

AP63423



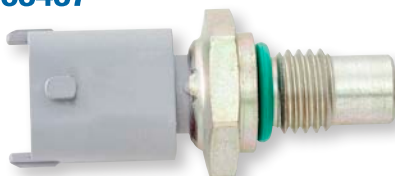
Exhaust Back Pressure (EBP) Sensor

OEM Part Numbers: 1846480C2, 1847913C91

Year Range:
2007–2010

Application:
MaxxForce 7

AP63437



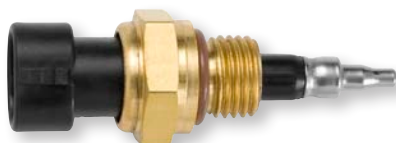
Engine Oil/Coolant/Fuel Temperature (EOT/ECT/FT) Sensor

OEM Part Number: 1836537C91

Year Range:
2007–2014

Application:
MaxxForce 7

AP63463



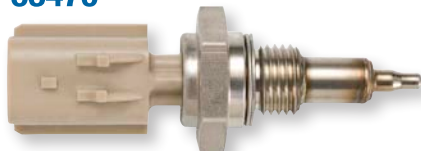
Intake Manifold Air Temperature (IAT) Sensor

OEM Part Number: 1875838C91

Year Range:
2007–2009

Application:
MaxxForce 7

AP63470



Exhaust Gas Recirculation (EGR) Temperature Sensor–Inlet

OEM Part Number: 1845988C1

Year Range:
2010–2014

Application:
MaxxForce 7

AP63471



Exhaust Gas Recirculation (EGR) Temperature Sensor–Outlet

OEM Part Number: 1888560C1

Year Range:
2010–2014

Application:
MaxxForce 7

MAXXFORCE 7

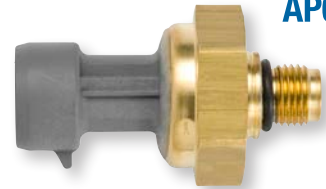
Sensors *continued*

Manifold Absolute Pressure (MAP) Sensor

OEM Part Number: 1846481C92

Year Range: 2007–2014
Application: MaxxForce 7

AP63476



Actuators

Exhaust Gas Recirculation (EGR) Valve

OEM Part Number: 1885819C92

Year Range: 2007–2010
Application: MaxxForce 7

AP63456



Electrical Harness and Repair

3 Wire Pigtail

Notes: Fits AP63423 Exhaust Back Pressure (EBP) Sensor and AP63476 Manifold Absolute Pressure (MAP) Sensor.

Year Range: 2007–2010
Application: MaxxForce 7

AP0021



2 Wire Pigtail

Notes: Fits AP63437 Engine Oil/Coolant/Fuel Temperature (EOT/ECT/FT) Sensor.

Year Range: 2007–2014
Application: MaxxForce 7

AP0056



Injector Harness

OEM Part Number: 1856010C95

Notes: Injector Harness for the right side.

Year Range: 2008–2010
Application: MaxxForce 7

AP63515



MAXXFORCE 7

Electrical Harness and Repair *continued*

AP63516



Injector Harness

OEM Part Number: 1856011C95

Notes: Injector Harness for the left side.

Year Range:
2008–2010

Application:
MaxxForce 7

Seal and Gasket Kits

AP0027



Injection Line and O-ring Kit

OEM Part Numbers: 1855644C3, 1886547C1, 1873425C93

Year Range:
2007–2014

Application:
MaxxForce 7

AP0042



Exhaust Gas Recirculation (EGR) Valve O-ring

OEM Part Number: 1847321C1

Year Range:
2007–2010

Application:
MaxxForce 7

AP0072



High-Pressure Fuel Pump (HPFP) Installation Kit

Notes: Pre-2010 emission engines. Installation kit only. If pump is needed see AP63641 Remanufactured High-Pressure Fuel Pump (HPFP) Kit.

Year Range:
2007–2010

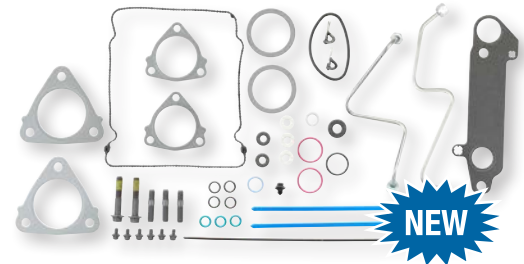
Application:
MaxxForce 7

Seal and Gasket Kits *continued*

High-Pressure Fuel Pump (HPFP) Installation Kit

Notes: Post 2010 emission engines. Installation kit only. If pump is needed see AP63642 Remanufactured High-Pressure Fuel Pump (HPFP) Kit.

Year Range: 2010–2014
Application: MaxxForce 7



Turbo Installation Kit

OEM Part Number: 1876540C92

Notes: Pre-2010 emission engines.

Year Range: 2007–2010
Application: MaxxForce 7



Turbo Installation Kit

OEM Part Number: 1897455C93

Notes: Post 2010 emission engines.

Year Range: 2010–2013
Application: MaxxForce 7



Filters

Oil Filter Element Service Kit (Racor)

Year Range: 2007–2010
Application: MaxxForce 7



Oil Filter Cap (Racor)

OEM Part Number: 1840754C91

Year Range: 2007–2010
Application: MaxxForce 7



DT466E, I530E, DT466 / 530, HT530

Injectors

AP63805BA



HEUI Injector*

OEM Part Numbers: 1819834C1, 1823736C94, 1824917C2, 1824928C94, 2593588C91

Notes: Includes copper chamber gasket.

Year Range:
1995–1997

Application:
DT466E: 230 HP (HT)
to 250 HP (HT)

ESN Range:
933,834 to 1,084,867

AP63806BB

HEUI Injector*

OEM Part Numbers: 1824739C1, 1824742C91, 1824918C2, 1824929C94, 2593589C91

Notes: Includes copper chamber gasket.

Year Range:
1995–1997

Application:
DT466E: 175 HP to 190 HP

ESN Range:
933,834 to 1,028,710

AP63807BC

HEUI Injector*

OEM Part Numbers: 1824740C1, 1824743C91, 1824919C2, 1824930C94, 2593590C91

Notes: Includes copper chamber gasket.

Year Range:
1995–1997

Application:
DT466E: 195 HP to 230 HP

ESN Range:
933,834 to 1,028,710

AP63808BD

HEUI Injector*

OEM Part Numbers: 1824741C2, 1824744C94, 1824920C2, 1824931C94, 2593591C91

Notes: Includes copper chamber gasket.

Year Range:
1995–1997

Application:
I530E: 250 HP to 300 HP (HT)

ESN Range:
933,834 to 1,084,028

AP63809BE

HEUI Injector*

OEM Part Numbers: 1824839C94, 1829336C1, 1829837C2, 1829838C94, 1829839C93, 1829926C2, 2593592C91

Notes: Includes copper chamber gasket.

Year Range:
1997–1999

Application:
DT466E: 175 HP to 190 HP

ESN Range:
1,028,711 to 1,194,038

AP63810BF

HEUI Injector*

OEM Part Numbers: 1830145C91, 1830146C94, 1830147C2, 1830148C2, 2593593C91

Notes: Includes copper chamber gasket.

Year Range:
1998–1999

Application:
I530E: 250 HP to 300 HP (HT)

ESN Range:
1,084,029 to 1,134,350

DT466E, I530E, DT466 / 530, HT530

Injectors *continued*

HEUI Injector*

OEM Part Numbers: 1830559C91, 1830560C2, 1830561C92, 1830562C2, 1830740C92, 1830741C92, 2593594C91, 2593595C91

Notes: Includes stainless steel and copper chamber gaskets.

Year Range:	Application:	ESN Range:
1999	DT466E: 175 HP to 250 HP (HT)	1,125,228 to 1,999,999
2000–2003	DT466: 175 HP to 250 HP (HT)	1,125,228 to 1,999,999

HEUI Injector

OEM Part Numbers: 1830155C91, 1830156C91, 1830157C1, 1830158C1, 1830570C91, 1830573C2, 2593596C91

Notes: Discontinued, supersedes to AP63812BJ HEUI Injector.

Year Range:	Application:	ESN Range:
1997–1999	DT466E: 230 HP (HT) to 250 HP (HT)	1,084,868 to 1,125,227

HEUI Injector*

OEM Part Numbers: 1830094C92, 1830570C92, 1830571C2, 1830572C93, 1830573C2, 2593596C91

Notes: Includes copper chamber gasket.

Year Range:	Application:	ESN Range:
1999	I530E: 230 HP (HT) to 300 HP (HT)	1,133,755 to 1,194,038

HEUI Injector*

OEM Part Numbers: 1830691C1, 1830692C91, 1830693C1, 1830694C93, 2593597C91

Notes: Includes stainless steel chamber gasket.

Year Range:	Application:	ESN Range:
2000–2003	DT530, HT530: 250 HP to 340 HP (HT)	1,194,039 to 1,999,999

HEUI Injector*

OEM Part Numbers: 1836250C1, 1836251C91, 1836252C91, 1836253C1

Notes: Includes stainless steel chamber gasket.

Year Range:	Application:
2000 and Later	DT466 Transit



AP63811BI

BG

AP63812BJ

AP63813BN

AP63814BP

* Indicates products with a core charge.

DT466E, I530E, DT466 / 530, HT530

Engine Components

AP63434



HEUI Injector Sleeve—Stainless Steel

OEM Part Number: 1818778C3

Notes: Engines built ON or AFTER 03/1996.

Year Range:

1996–1999

2000–2003

Application:

DT466E, I530E

DT466 / 530, HT530

AP63452



Engine Oil Cooler

OEM Part Number: 1815904C2

Year Range:

1995–1999

2000–2003

Application:

DT466E, I530E

DT466 / 530, HT530

AP63580



Water Pump

OEM Part Numbers: 1817687C92, 1821935C3, 1830606C94

Notes: Includes mounting gasket. Engines built ON or AFTER 09/1993.

Year Range:

1994–1999

2000–2003

Application:

DT466E, I530E

DT466 / 530, HT530

HP020X



Remanufactured High-Pressure Oil Pump (Bosch)

OEM Part Numbers: 1830177C92, 1842722C91

Notes: Includes mounting gasket. 6.5cc pump.

Year Range:

1994–1999

2000–2003

Application:

I530E: 230 HP (HT) to 300 HP

DT466 / 530, HT530: 230 HP (HT) to 300 HP

HP021X



Remanufactured High-Pressure Oil Pump (Bosch)

OEM Part Numbers: 1825681C95, 1842721C91

Notes: Includes mounting gasket. 5.3cc pump.

Year Range:

1994–1999

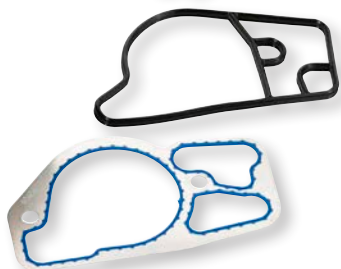
2000–2003

Application:

DT466E: 175 HP to 230 HP

DT466: 175 HP to 230 HP

HP022X



Remanufactured High-Pressure Oil Pump (Bosch)

OEM Part Numbers: 1842723C91, 1826458C92

Notes: Includes mounting gasket. 7.0cc pump.

Year Range:

1994–1999

2000–2003

Application:

I530E: 300 HP to 330 HP

DT530, HT530: 300 HP to 330 HP

DT466E, I530E, DT466 / 530, HT530

Sensors

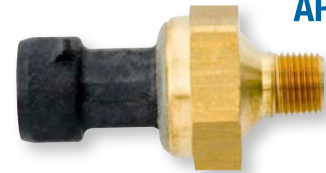
Pressure Sensor

OEM Part Number: 1840078C1

Notes: Manifold Absolute Pressure (MAP) Sensor. Mounts on intake manifold.

Year Range:
1998–2003

Application:
DT466E, I530E, DT466 / 530, HT530



AP63429

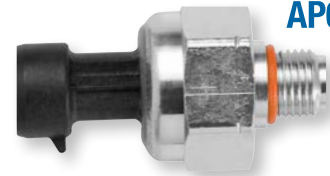
Injection Control Pressure (ICP) Sensor

OEM Part Number: 1830669C92

Year Range:
See ESN

Application:
DT466E, I530E, DT466 / 530, HT530

ESN Range:
1,134,351 to 1,999,999



AP63465

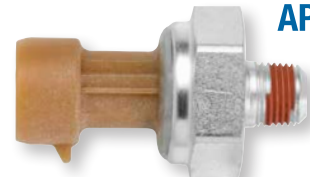
Engine Oil Pressure (EOP) Sensor

OEM Part Number: 1807369C2

Year Range:
See ESN

Application:
DT466E, I530E, DT466 / 530, HT530

ESN Range:
1,126,949 to 1,999,999



AP63466

Actuators

Injection Pressure Regulator (IPR) Valve

OEM Part Numbers: 1824982C91, 1833798C91, 1841279C91

Notes: With edge filter.

Year Range:
1994–1995½

Application:
DT466E, I530E

ESN Range:
0 to 998,705



AP63401

Injection Pressure Regulator (IPR) Valve

OEM Part Numbers: 1829856C91, 1836412C91, 1841086C91, 1841217C91

Notes: Without edge filter.

Year Range:
1995½–2003
2000–2003

Application:
DT466E, I530E
DT466 / 530, HT530

ESN Range:
998,706 to 1,999,999
998,706 to 1,999,999



AP63402

DT466E, I530E, DT466 / 530, HT530

Electrical Harness and Repair

AP0021



3 Wire Pigtail

Notes: Fits AP63465 Injection Control Pressure (ICP) Sensor and AP63466 Engine Oil Pressure (EOP) Sensor.

Year Range:
1994–2003

Application:
DT466E, I530E, DT466 / 530, HT530

AP0068



2 Wire Pigtail

Notes: Fits AP63401 and AP63402 Injection Pressure Regulator (IPR) Valves and all HEUI B Injectors.

Year Range:
1994–1999
2000–2003

Application:
DT466E, I530E
DT466 / 530, HT530

AP63464



Internal Injector Harness

OEM Part Numbers: 1889905C91, 30360R1, 1824908C1

Notes: Includes mounting bolts.

Year Range:
1994–2003

Application:
DT466E, I530E, DT466 / 530, HT530

Seal and Gasket Kits

AP0001



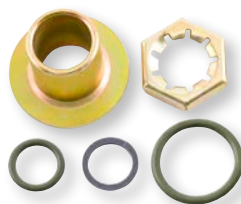
HEUI Injector Seal Kit

OEM Part Number: 1833564C92

Year Range:
1994–1999
2000–2003

Application:
DT466E, I530E
DT466 / 530, HT530

AP0003



Injection Pressure Regulator (IPR) Seal Kit

OEM Part Number: 1825806C91

Year Range:
1994–1999
2000–2003

Application:
DT466E, I530E
DT466 / 530, HT530

DT466E, I530E, DT466 / 530, HT530

Seal and Gasket Kits *continued*

Stainless Steel Chamber Gaskets

OEM Part Number: 1830317C1

Notes: Package of six.

Year Range:

As Required

Application:

DT466E, I530E, DT466 / 530, HT530



AP0006

Valve Cover Gasket

OEM Part Numbers: 1820909C1, 1825602C91

Year Range:

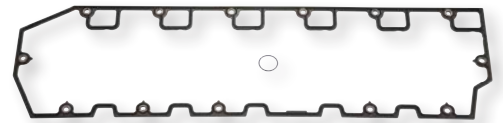
1994–1999

2000–2003

Application:

DT466E, I530E

DT466 / 530, HT530



AP0036

Primer Pump Seal Kit

Year Range:

1995–2003

Application:

DT466E, I530E, DT466 / 530, HT530



AP0038

***For Additional Information
such as OEM Cross Reference
and Product Instructions
Please Visit alliantpower.com***

PERKINS, DETROIT DIESEL, AGCO

Injectors

AP63805BA



HEUI Injector*

OEM Part Numbers: 1819834C1, 1823736C94, 1824917C2, 1824928C94, 2593588C91

Notes: Includes copper chamber gasket.

Year Range:
1995–1997

Engine:
7.6L Perkins 1300 Series EDi

AP63808BD

HEUI Injector*

OEM Part Numbers: 1824741C2, 1824744C94, 1824920C2, 1824931C94, 2593591C91

Notes: Includes copper chamber gasket.

Year Range:
1995–1997

Engine:
8.7L Perkins 1300 Series EDi

AP63810BF

HEUI Injector*

OEM Part Numbers: 1830145C91, 1830146C94, 1830147C2, 1830148C2, 2593593C91

Notes: Includes copper chamber gasket.

Year Range:
1998–1999
1998–1999
1998–1999

Engine:
8.7L Perkins 1300 Series EDi
8.7L Detroit Diesel Series 40E
8.7L AGCO 9675

AP63811BI

HEUI Injector*

OEM Part Numbers: 1830559C91, 1830560C2, 1830561C92, 1830562C2, 1830740C92, 1830741C92, 2593594C91, 2593595C91

Notes: Includes stainless steel and copper chamber gaskets.

Year Range:
1999–2003

Engine:
7.6L Perkins 1300 Series EDi

AP63812BJ

HEUI Injector*

OEM Part Numbers: 1830094C92, 1830570C92, 1830571C2, 1830572C93, 1830573C2, 2593596C91

Notes: Includes copper chamber gasket.

Year Range:
1999
1999

Engine:
8.7L Perkins 1300 Series EDi
8.7L Detroit Diesel Series 40E

PERKINS, DETROIT DIESEL, AGCO

Injectors *continued*

HEUI Injector*

OEM Part Numbers: 1830691C1, 1830692C91, 1830693C1, 1830694C93, 2593597C91

Notes: Includes stainless steel chamber gasket.

Year Range:	Engine:
2000–2003	8.7L Perkins 1300 Series EDi
2000–2003	8.7L Detroit Diesel Series 40E

AP63813BN



AP63814BP

HEUI Injector*

OEM Part Numbers: 1836250C1, 1836251C91, 1836252C91, 1836253C1

Notes: Includes stainless steel chamber gasket.

Year Range:	Engine:
2000 and Later	7.6L Detroit Diesel Series 40E

Seal and Gasket Kits

HEUI Injector Seal Kit

OEM Part Number: 1833564C92

Year Range:	Engine:
1995–1997	7.6L Perkins 1300 Series EDi
1999–2003	7.6L Perkins 1300 Series EDi
1995–2003	8.7L Perkins 1300 Series EDi
1998–2003	8.7L Detroit Diesel Series 40E
2000 and Later	7.6L Detroit Diesel Series 40E
1998–1999	8.7L AGCO 9675

AP0001



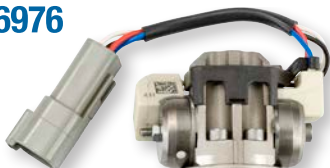
***Visit alliantpower.com
for Additional Information
Such as Technical Bulletins and
New Product Announcements***

** Indicates products with a core charge.*

DT466 / 570, HT570, MAXXFORCE DT / 9 / 10

Injectors

AP66976



Remanufactured G2.9 Injector*

OEM Part Numbers: 1842576C93, 5010656R92, 1841491C91, 1842223C91

Notes: Installation requires removal of high-pressure oil rail. Use AP0025 High-Pressure Oil Rail Seal Kit when reinstalling oil rail.

Year Range:
2004

Application:
DT466: 210 HP to 225 HP

ESN Range:
2,000,001 to 2,999,999

AP66977



Remanufactured G2.9 Injector*

OEM Part Numbers: 1842577C93, 5010657R92, 1842224C91

Notes: Installation requires removal of high-pressure oil rail. Use AP0025 High-Pressure Oil Rail Seal Kit when reinstalling oil rail.

Year Range:
2004
2005

Application:
DT466: 245 HP to 285 HP (HT)
DT466: 210 HP to 285 HP

ESN Range:
2,000,001 to 2,999,999
2,000,001 to 2,999,999

AP66978

Remanufactured G2.9 Injector*

OEM Part Numbers: 1842578C94, 5010658R92, 1842225C91

Notes: Installation requires removal of high-pressure oil rail. Use AP0025 High-Pressure Oil Rail Seal Kit when reinstalling oil rail.

Year Range:
2004–2005

Application:
DT570: 285 HP to 330 HP

ESN Range:
2,000,001 to 2,999,999

AP66979

Remanufactured G2.9 Injector*

OEM Part Numbers: 1842579C94, 5010659R92, 1842226C91

Notes: Installation requires removal of high-pressure oil rail. Use AP0025 High-Pressure Oil Rail Seal Kit when reinstalling oil rail.

Year Range:
2004–2005

Application:
HT570: 295 HP to 340 HP (HT)

ESN Range:
2,000,001 to 2,999,999

AP66989

Remanufactured G2.9 BANG Injector*

OEM Part Number: 1848489C91

Notes: Installation requires removal of high-pressure oil rail. Use AP0025 High-Pressure Oil Rail Seal Kit when reinstalling oil rail.

Year Range:
2006

Application:
DT466: 210 HP to 285 HP

AP66992

Remanufactured G2.9 BANG Injector*

OEM Part Number: 1848492C91

Notes: Installation requires removal of high-pressure oil rail. Use AP0025 High-Pressure Oil Rail Seal Kit when reinstalling oil rail.

Year Range:
2006

Application:
DT570: 285 HP to 330 HP

DT466 / 570, HT570, MAXXFORCE DT / 9 / 10

Injectors *continued*

Remanufactured G2.9 BANG Injector*

OEM Part Number: 1848495C91

Notes: Installation requires removal of high-pressure oil rail. Use AP0025 High-Pressure Oil Rail Seal Kit when reinstalling oil rail.

Year Range: 2006
Application: HT570: 295 HP to 340 HP (HT)

AP66995

Remanufactured G2.9 Injector*

OEM Part Numbers: 1848718C92, 5010561R91

Notes: Installation requires removal of high-pressure oil rail. Use AP0025 High-Pressure Oil Rail Seal Kit when reinstalling oil rail.

Year Range: 2007–2010
Application: MaxxForce DT: 210 HP to 300 HP
ESN Range: 3,000,001 to 3,300,000

AP66918

Remanufactured G2.9 Injector*

OEM Part Numbers: 1848721C92, 4307212R91

Notes: Installation requires removal of high-pressure oil rail. Use AP0025 High-Pressure Oil Rail Seal Kit when reinstalling oil rail.

Year Range: 2007–2010
Application: MaxxForce 9: 300 HP to 330 HP
 2007–2010 MaxxForce 10: 310 HP to 350 HP
ESN Range: 3,000,001 to 3,300,000
 3,000,001 to 3,300,000

AP66921

Remanufactured G2.9 Injector*

OEM Part Numbers: 1890055C92, 1890056C2

Notes: Installation requires removal of high-pressure oil rail. Use AP0025 High-Pressure Oil Rail Seal Kit when reinstalling oil rail.

Year Range: 2010–2014
Application: MaxxForce DT: 215 HP to 300 HP

AP66955



Remanufactured G2.9 Injector*

OEM Part Numbers: 1884057C92, 1884058C2

Notes: Installation requires removal of high-pressure oil rail. Use AP0025 High-Pressure Oil Rail Seal Kit when reinstalling oil rail.

Year Range: 2010–2014
Application: MaxxForce DT: 210 HP to 225 HP

AP66957



Remanufactured G2.9 Injector*

OEM Part Numbers: 1890057C92, 1890058C2

Notes: Installation requires removal of high-pressure oil rail. Use AP0025 High-Pressure Oil Rail Seal Kit when reinstalling oil rail.

Year Range: 2010–2014
 2010–2014
 2015
 2015
Application: MaxxForce 9: 300 HP to 330 HP
 MaxxForce 10: 310 HP to 350 HP
 N9
 N10

AP66958



* Indicates products with a core charge.

DT466 / 570, HT570, MAXXFORCE DT / 9 / 10

Engine Components

AP63582



Water Pump

OEM Part Numbers: 1842664C92, 1842665C93

Notes: Includes mounting gasket.

Year Range:
2004–2006
2007–2010

Application:
DT466 / 570, HT570
MaxxForce DT / 9 / 10

AP63680



12cc High-Pressure Oil Pump*

OEM Part Numbers: 1885043C92, 1885044C2, 1889323C93, 5010736R91, 5010755R92, 7093938C91

Year Range:
2010–2014

Application:
MaxxForce DT

ESN Range:
3,300,001 to End

AP63681



16cc High-Pressure Oil Pump*

OEM Part Numbers: 1885045C92, 1885046C2, 1889324C92, 5010755R91, 7093939C91

Year Range:
2010–2014
2015

Application:
MaxxForce 9 / 10
N9

ESN Range:
3,300,001 to End

Notes for AP63680 & AP63681: Injection Pressure Regulator (IPR) Valve is included.

AP63682



12cc High-Pressure Oil Pump*

OEM Part Numbers: 1883888C93, 1842424C2, 1871291C4, 1842423C97, 1871292C96, 1842614C91

Year Range:
2004–2006

Application:
DT466

ESN Range:
2,000,001 to 2,999,999

AP63683



16cc High-Pressure Oil Pump*

OEM Part Numbers: 1885000C93, 1842426C2, 1842425C96, 1842617C91

Year Range:
2004–2006

Application:
DT570, HT570

ESN Range:
2,000,001 to 2,999,999

Notes for AP63682 & AP63683: Injection Pressure Regulator (IPR) Valve and Fuel Supply Pump are included.

DT466 / 570, HT570, MAXXFORCE DT / 9 / 10

Engine Components *continued*

12cc High-Pressure Oil Pump Kit*

OEM Part Numbers: 1876105C95, 1832093C2, 1879744C2, 1832092C92, 1879743C93

Year Range:	Application:	ESN Range:
2007–2010	MaxxForce DT	3,000,001 to 3,040,000

16cc High-Pressure Oil Pump Kit*

OEM Part Numbers: 1882259C93, 1876106C94, 1832095C2, 1832094C92

Year Range:	Application:	ESN Range:
2007–2010	MaxxForce 9 / 10	3,000,001 to 3,040,000

Notes for AP63684 & AP63685: Injection Pressure Regulator (IPR) Valve, Fuel Supply Pump, updated High-Pressure Hose and Fitting are included. OEM part numbers for both the early and late 16cc High-Pressure Pumps (AP63685 and AP63687) supersede to 1882259C93. The ESN must be used to determine which Alliant Power part number is required.



12cc High-Pressure Oil Pump*

OEM Part Numbers: 1882258C93, 1832093C2, 1879744C2, 1832092C92, 1879743C93

Year Range:	Application:	ESN Range:
2007–2010	MaxxForce DT	3,040,001 to 3,300,000

16cc High-Pressure Oil Pump*

OEM Part Numbers: 1882259C93, 1832095C2, 1832094C92, 1879747C2, 1879745C93

Year Range:	Application:	ESN Range:
2007–2010	MaxxForce 9 / 10	3,040,001 to 3,300,000

Note for AP63686 & AP63687: Injection Pressure Regulator (IPR) Valve and Fuel Supply Pump are included. OEM part numbers for both the early and late 16cc High-Pressure Pumps (AP63685 and AP63687) supersede to 1882259C93. The ESN must be used to determine which Alliant Power part number is required.



* Indicates products with a core charge.

DT466 / 570, HT570, MAXXFORCE DT / 9 / 10

Sensors

AP63412



Engine Speed/Position Sensor

OEM Part Number: 1828345C91

Notes: Camshaft Speed/Position.

Year Range:

2004–2006
2007–2010

Application:

DT466 / 570, HT570
MaxxForce DT / 9 / 10

AP63415



Engine Speed/Position Sensor

OEM Part Number: 1835985C92

Notes: Crankshaft Speed/Position.

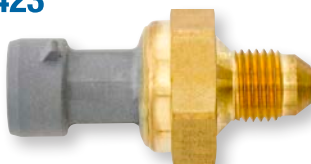
Year Range:

2004–2006
2007–2010

Application:

DT466 / 570, HT570
MaxxForce DT / 9 / 10

AP63423



Exhaust Back Pressure (EBP) Sensor

OEM Part Number: 1846480C2

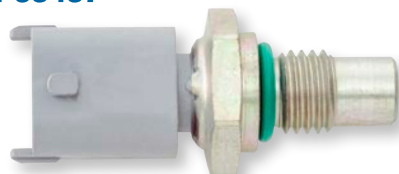
Year Range:

2004–2006
2007–2010

Application:

DT466 / 570, HT570
MaxxForce DT / 9 / 10

AP63437



Engine Oil/Coolant/Fuel Temperature (EOT/ECT/FT) Sensor

OEM Part Number: 1836537C91

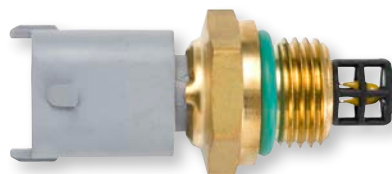
Year Range:

2004–2006
2007–2010

Application:

DT466 / 570, HT570
MaxxForce DT / 9 / 10

AP63462



Intake Manifold Air Temperature (IAT) Sensor

OEM Part Number: 1836539C91

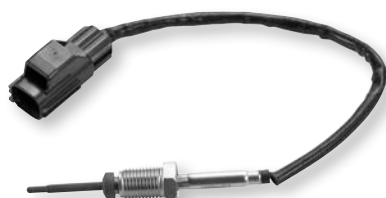
Year Range:

2004–2006

Application:

DT466 / 570, HT570

AP63471



Exhaust Gas Recirculation (EGR) Temperature Sensor–Outlet

OEM Part Number: 1888560C1

Year Range:

2010–2011

Application:

MaxxForce DT / 9 / 10

DT466 / 570, HT570, MAXXFORCE DT / 9 / 10

Sensors continued

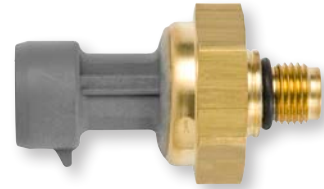
Manifold Absolute Pressure (MAP) Sensor

OEM Part Number: 1846481C92

Year Range:
2007–2011

Application:
MaxxForce DT / 9 / 10

AP63476



Electrical Harness and Repair

3 Wire Pigtail

Notes: Fits AP63423 Exhaust Back Pressure (EBP) Sensor and AP63476 Manifold Absolute Pressure (MAP) Sensor.

Year Range:
2004–2006
2007–2010

Application:
DT466 / 570, HT570
MaxxForce DT / 9 / 10

AP0021



2 Wire Pigtail

Notes: Fits AP63437 Engine Oil/Coolant/Fuel Temperature (EOT/ECT/FT) Sensor.

Year Range:
2004–2006
2007–2010

Application:
DT466 / 570, HT570
MaxxForce DT / 9 / 10

AP0056



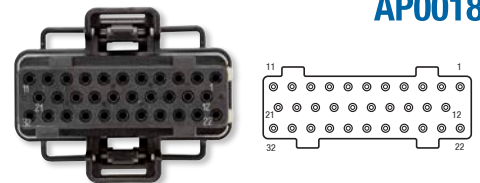
Fuel Injection Control Module (FICM) Connector

Notes: Field data shows identification marks 1456315–6, 1437287–7, or X–3.

Year Range:
2004–2006

Application:
DT466 / 570, HT570

AP0018



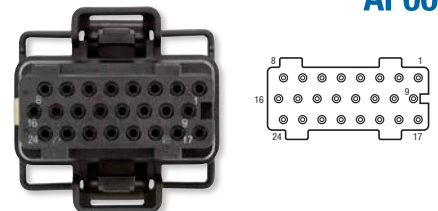
Fuel Injection Control Module (FICM) Connector

Notes: Field data shows identification marks 1456315–2, 1437287–6, or X–2.

Year Range:
2004–2006

Application:
DT466 / 570, HT570

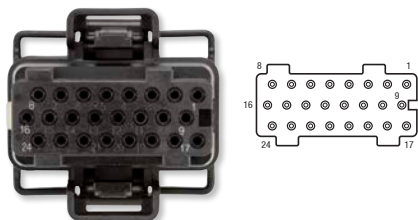
AP0019



DT466 / 570, HT570, MAXXFORCE DT / 9 / 10

Electrical Harness and Repair *continued*

AP0020



Fuel Injection Control Module (FICM) Connector

Notes: Field data shows identification marks 1456316-1, 1437287-5, or X-1.

Year Range:
2004–2006

Application:
DT466 / 570, HT570

AP0068



2 Wire Pigtail

Notes: Fits the Injection Pressure Regulator (IPR) Valves.

Year Range:
2004–2006
2007–2013

Application:
DT466 / 570, HT570
MaxxForce DT / 9 / 10

Seal and Gasket Kits

AP0006



Stainless Steel Chamber Gaskets

OEM Part Number: 1830317C1

Notes: Package of six.

Year Range:
2004–2006
2007–2010

Application:
DT466 / 570, HT570
MaxxForce DT / 9 / 10

AP0025



High-Pressure Oil Rail Seal Kit

OEM Part Number: 1842626C95

Year Range:
2004–2006
2007–2010

Application:
DT466 / 570, HT570
MaxxForce DT / 9 / 10

AP0026



G2.9 Injector Seal Kit

OEM Part Number: 1842624C92

Year Range:
2004–2006
2007–2010

Application:
DT466 / 570, HT570
MaxxForce DT / 9 / 10

***Visit alliantpower.com
to Find Your Nearest
Service Dealer***



GM



6.5L

Fuel System Components

AP63440



Fuel Transfer Pump

OEM Part Numbers: 25117340, EP309

Year Range:
1994–1999

Engine:
6.5L

AP63441



Fuel Transfer Pump

OEM Part Numbers: 15754298, EP1000

Year Range:
1999–2002

Engine:
6.5L

Engine Components

AP63560



Water Pump

OEM Part Numbers: 12530176, 19168610, 88894036, 251–590

Notes: Includes mounting gasket. Field data indicates both Water Pumps (AP63560 and AP63561) were used for MY 1999 vehicles. Be sure to verify which Water Pump is in place. Used for bolt-on pulley applications.

Year Range:
1994–1999

Engine:
6.5L F, S, or Y

AP63561



Water Pump

OEM Part Numbers: 12556231, 88894035, 251–603, 252–776

Notes: Includes mounting gasket. Field data indicates both Water Pumps (AP63560 and AP63561) were used for MY 1999 vehicles. Be sure to verify which Water Pump is in place. Used for press-on pulley applications.

Year Range:
1999–2003

Engine:
6.5L

Sensors

Engine Oil Pressure (EOP) Switch

OEM Part Numbers: 12555492, D1808A

Year Range: 1992–2002
Engine: 6.5L

AP63419



Crankshaft Position (CKP) Sensor

OEM Part Numbers: 12557046, 213–337

Year Range: 1994–2002
Engine: 6.5L

AP63444



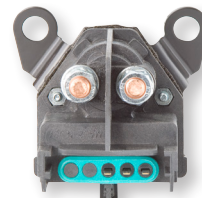
Actuators

Glow Plug Relay

OEM Part Numbers: 12496472, 212–366, RY383

Year Range: 1994–2002
Engine: 6.5L

AP63420

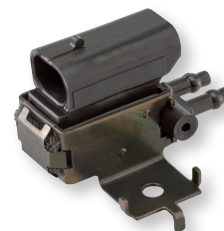


Turbo Wastegate Solenoid

OEM Part Numbers: 1997227, 214–1073

Year Range: 1994–2002
Engine: 6.5L

AP63443



Electrical Harness and Repair

Engine Oil Pressure (EOP) Switch Connector Pigtail

OEM Part Numbers: 12085499, PT121

Year Range: 1992–2002
Engine: 6.5L

AP0022



DS Pump 8" Wiring Harness Extension

Year Range: 1994–2002
Engine: 6.5L

AP0024



6.5L

Electrical Harness and Repair *continued*

AP0034



Turbo Wastegate Solenoid Connector Pigtail

Year Range: 1994–2002
Engine: 6.5L

AP0067



Glow Plug Wire Harness Extension

OEM Part Number: 15320904

Year Range: 1994–2002
Engine: 6.5L

Seal and Gasket Kits

APE65110



DS Pump Installation Kit

Year Range: 1992–2002
Engine: 6.5L

Engine Accessories

AP63485



PMD & Harness Kit

OEM Part Number: 35976

Year Range: 1994–2002
Engine: 6.5L

AP63486



PMD Kit

OEM Part Number: 40736

Year Range: 1994–2002
Engine: 6.5L

AP63701



Vacuum Pump–Mechanical

OEM Part Numbers: 7849209, 215–115

Notes: Also fits 6.2L.

Year Range: 1988–1995
Engine: 6.5L

6.5L / 6.6L DURAMAX

Engine Accessories *continued*

Vacuum Pump—Mechanical

OEM Part Numbers: 89017558, 215–479

Year Range: 1996–2002
Engine: 6.5L



AP63702

Fuel System Components

Fuel Transfer Pump

OEM Part Numbers: 15161174, EP1001, EP1020, 15821962

Year Range: 2001–2011
Engine: 6.6L Duramax



AP63442

Fuel Return Line Banjo Bolt

OEM Part Number: 97228929

Year Range: 2001–2004
Engine: 6.6L LB7 Duramax



AP0059

Injection Line

OEM Part Number: 97188720

Notes: Cylinders 1 and 8.

Year Range: 2001–2004
Engine: 6.6L LB7 Duramax



AP63720

Injection Line

OEM Part Number: 97188721

Notes: Cylinders 3 and 6.

Year Range: 2001–2004
Engine: 6.6L LB7 Duramax



AP63721

6.6L DURAMAX

Fuel System Components *continued*

AP63722



Injection Line

OEM Part Number: 97188722

Notes: Cylinders 4 and 5.

Year Range:
2001–2004

Engine:
6.6L LB7 Duramax

AP63723



Injection Line

OEM Part Number: 97188723

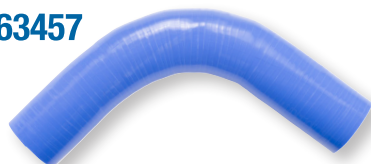
Notes: Cylinders 2 and 7.

Year Range:
2001–2004

Engine:
6.6L LB7 Duramax

Engine Components

AP63457



Turbo Hose

OEM Part Numbers: 15019994, 15019995

Year Range:
2001–2004

Engine:
6.6L LB7 Duramax

AP63562



Water Pump

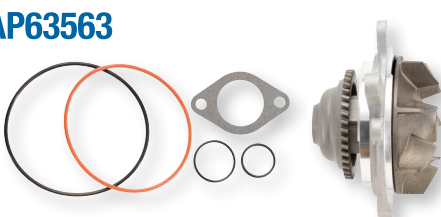
OEM Part Numbers: 97216136, 19113733, 19168888, 252–838, 251–674, 251–723

Notes: Includes mounting gaskets.

Year Range:
2001–2005

Engine:
6.6L Duramax

AP63563



Water Pump

OEM Part Numbers: 98031233, 251–738, 12637105

Notes: Includes mounting gaskets.

Year Range:
2006–2014

Engine:
6.6L Duramax

Electrical Harness and Repair

AP0068



2 Wire Pigtail

Notes: Fits the VGT Solenoid.

Year Range:
2004½–2012

Engine:
6.6L LLY, LBZ, LMM, LML, LGH Duramax

6.6L DURAMAX

Seal and Gasket Kits

Fuel Filter Base and Hand Primer Seal Kit

AP0029

Year Range:
2001–2010

Engine:
6.6L Duramax



Head Installation Kit

AP0045

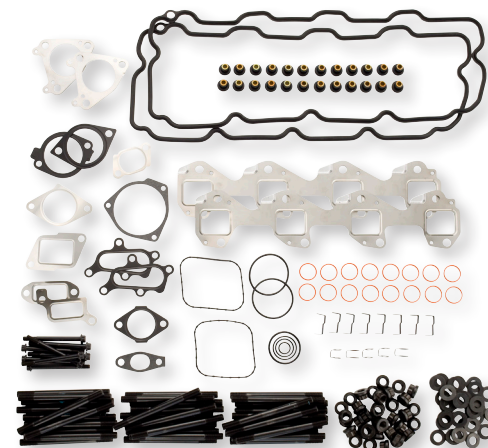
Notes: Head Gaskets sold separately refer to AP0047–AP0052.

Year Range:
2001–2004

Engine:
6.6L LB7 Duramax

Kit Contents:

- 2 Lower Valve Cover Gaskets
- 1 Exhaust Manifold Gasket Kit
- 1 Intake Manifold Gasket Kit
- 2 Thermostat Housing to Head Gaskets
- 1 Exhaust Gas Recirculation (EGR) System Gasket Kit
- 1 Water Pump to Outlet Pipe Gasket
- 1 Fuel Return Line Kit
- 16 Injector Cup Seals
- 1 Turbo Inlet Gasket
- 1 Coolant Bypass Pipe Seal Kit
- 1 Thermostat Housing to Coolant Outlet Pipe Seal
- 1 Thermostat Housing to Heater Pipe Seal
- 2 Fuel Injection Control Module (FICM) Banjo Seals
- 1 Head Stud Kit



Head Installation Kit

AP0046

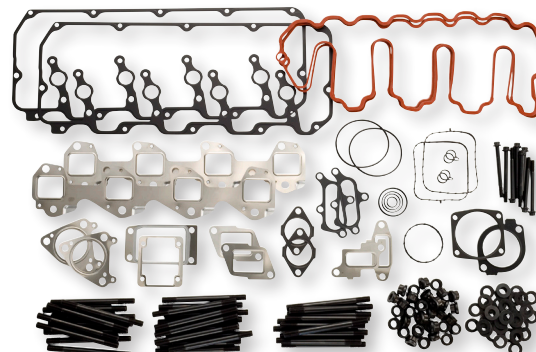
Notes: Head Gaskets sold separately refer to AP0047–AP0052.

Year Range:
2004½–2010

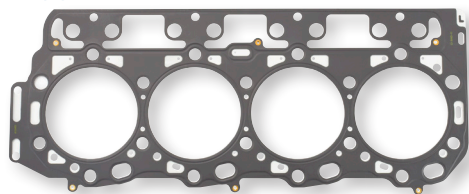
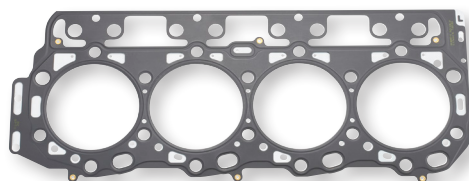
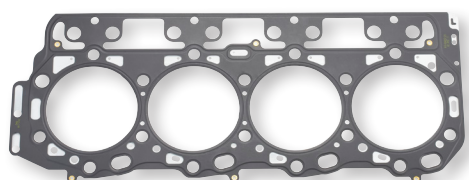
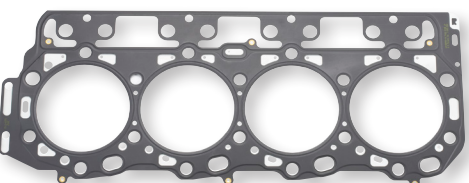
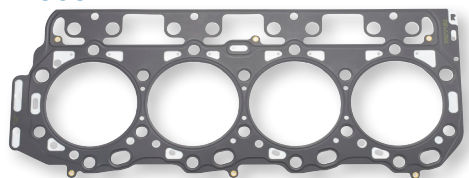
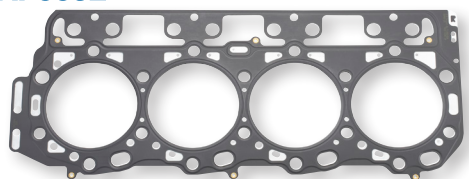
Engine:
6.6L LLY, LBZ, LMM Duramax

Kit Contents:

- 2 Upper Valve Cover Gaskets
- 2 Lower Valve Cover Gaskets
- 1 Exhaust Manifold Gasket Kit
- 1 Intake Manifold Gasket Kit
- 2 Thermostat Housing to Head Gaskets
- 1 Exhaust Gas Recirculation (EGR) System Gasket Kit
- 1 Water Pump to Outlet Pipe Gasket
- 1 Coolant Bypass Pipe Seal Kit
- 1 Thermostat Housing to Coolant Outlet Pipe Seal
- 1 Thermostat Housing to Exhaust Gas Recirculation (EGR) Cooler Pipe Seal
- 2 Fuel Injection Control Module (FICM) Banjo Seals
- 1 Head Stud Kit



6.6L DURAMAX

Seal and Gasket Kits *continued***AP0047****Head Gasket****OEM Part Number:** 98045058**Notes:** 0.95 mm, Grade A, left.**Year Range:**
2001–2010**Engine:**
6.6L Duramax**AP0048****Head Gasket****OEM Part Number:** 98045059**Notes:** 1.00 mm, Grade B, left.**Year Range:**
2001–2010**Engine:**
6.6L Duramax**AP0049****Head Gasket****OEM Part Number:** 98045060**Notes:** 1.05 mm, Grade C, left.**Year Range:**
2001–2010**Engine:**
6.6L Duramax**AP0050****Head Gasket****OEM Part Number:** 98045055**Notes:** 0.95 mm, Grade A, right.**Year Range:**
2001–2010**Engine:**
6.6L Duramax**AP0051****Head Gasket****OEM Part Number:** 98045056**Notes:** 1.00 mm, Grade B, right.**Year Range:**
2001–2010**Engine:**
6.6L Duramax**AP0052****Head Gasket****OEM Part Number:** 98045057**Notes:** 1.05 mm, Grade C, right.**Year Range:**
2001–2010**Engine:**
6.6L Duramax

6.6L DURAMAX

Engine Accessories

Belt Tensioner

OEM Part Numbers: 97329062, 38172, 89003343, 98094201, 97288625

Year Range: 2002–2014
Engine: 6.6L Duramax

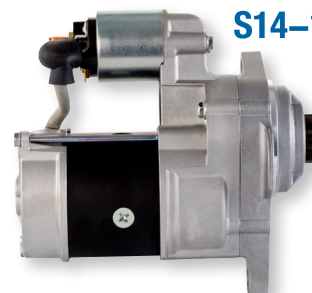


AP63449

Remanufactured Starter

OEM Part Numbers: 88864234, 336–1737

Year Range: 2003–2011
Engine: 6.6L Duramax



S14-101DAM

Filters

Spin-on Fuel Filter (Racor)

OEM Part Numbers: 98017645, TP1298B

Year Range: 2001–2011
Engine: 6.6L Duramax
Application: Silverado and Sierra Vehicles



PFF50216

Fuel Filter Service Kit (Racor)

Notes: Primary and secondary.

Year Range: 2005–2011
Engine: 6.6L Duramax
Application: Express and Savana Vehicles



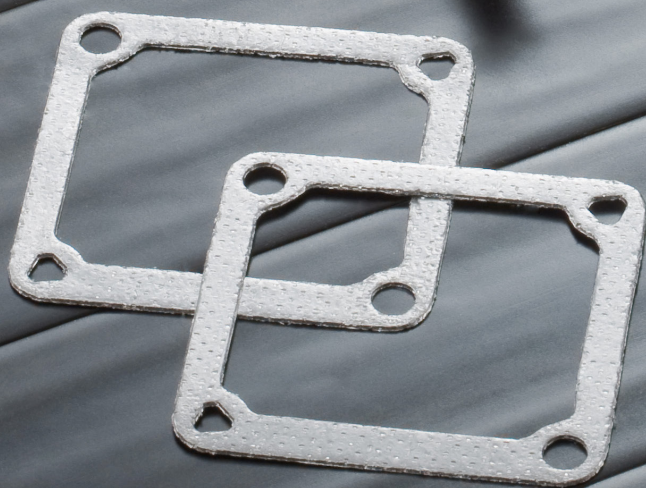
PFF58567

Drain Valve/Water Sensor Kit (Racor)

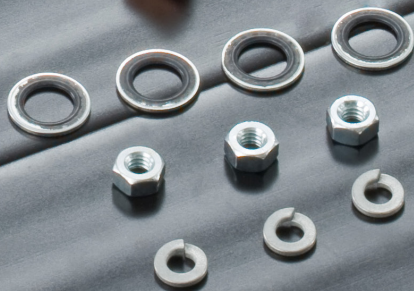
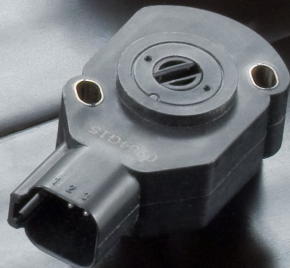
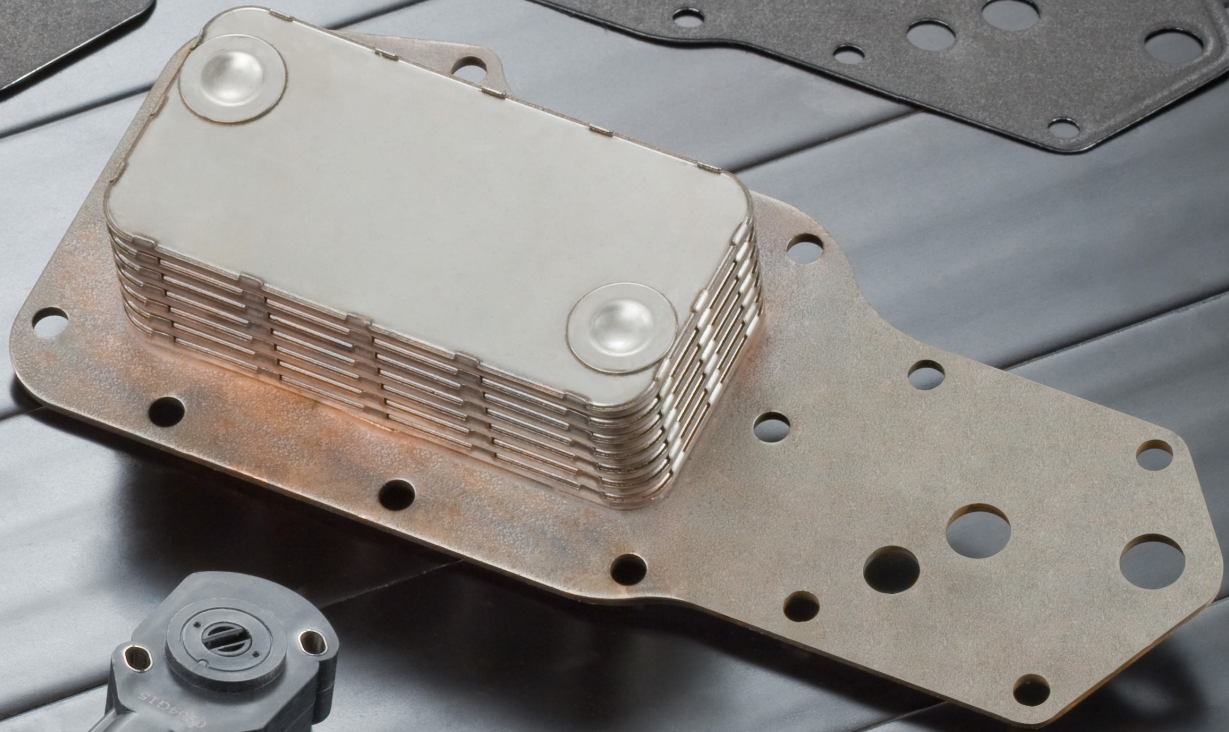
Year Range: 2001–2011
Engine: 6.6L Duramax



RK42043



DODGE/CUMMINS



DODGE/CUMMINS

ENGINES WITH PT PUMPS

Fuel System Components

AP3035342



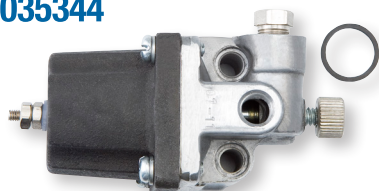
Fuel Shut-off Valve Assembly-12 Volt

OEM Part Number: 3035342

Year Range:
N/A

Application:
PT Pumps

AP3035344



Fuel Shut-off Valve Assembly-24 Volt

OEM Part Number: 3035344

Year Range:
N/A

Application:
PT Pumps

AP4024808



Fuel Shut-off Coil-12 Volt

OEM Part Number: 4024808

Year Range:
N/A

Application:
PT Pumps

AP4024809



Fuel Shut-off Coil-24 Volt

OEM Part Number: 4024809

Year Range:
N/A

Application:
PT Pumps

***For the Most Up To Date
Product Information Visit
alliantpower.com***

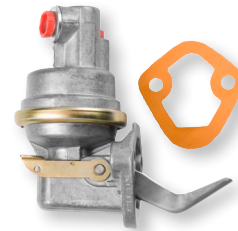
Fuel System Components

Fuel Transfer Pump

OEM Part Numbers: 3901425, 3904374, 3928143, 3966154, 3970880, 4983584

Year Range:
1989–1993

Application:
5.9L B-Series, 12-Valve



AP63478

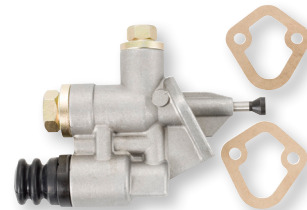
Fuel Transfer Pump Kit

OEM Part Numbers: 3936316, 4988747, 4944710

Notes: Includes two mounting gaskets.

Year Range:
1994–1998

Application:
5.9L B-Series, 12-Valve



AP4988747

Fuel Transfer Pump Kit

OEM Part Numbers: 3990082, 3990105, 4932707, 4935730

Year Range:
1998–2003

Application:
5.9L ISB with VP44



AP4943048

Fuel Transfer Pump Kit

OEM Part Number: 3969705 (Hose)

Year Range:
2003–2004

Application:
5.9L ISB with Common Rail



AP4089602

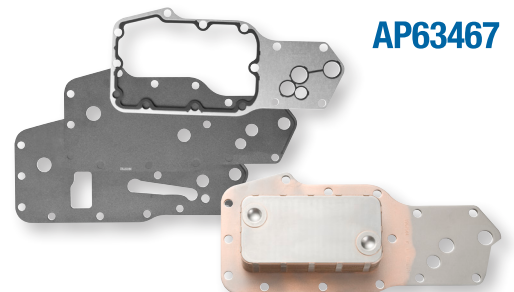
Engine Components

Oil Cooler

OEM Part Numbers: 3921558, 3957544, 4713985AB

Year Range:
1993–1998
1998–2003

Application:
5.9L B-Series, 12-Valve
5.9L ISB with VP44



AP63467

DODGE/CUMMINS

5.9L

Engine Components *continued*

AP63531



Water Pump

OEM Part Numbers: 3286278, 3286277

Notes: Includes mounting gasket. Supersedes AP63530 Water Pump.

Year Range:

1990–1998

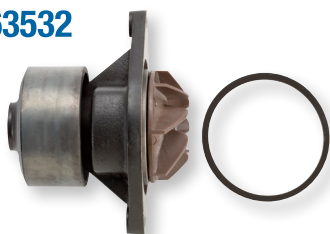
1998–2003

Application:

5.9L B-Series, 12-Valve

5.9L ISB with VP44

AP63532



Water Pump

OEM Part Numbers: 3800984, 4891252

Notes: Includes mounting gasket.

Year Range:

2003–2007

Application:

5.9L ISB with Common Rail

Sensors

AP63428



Accelerator Pedal Position Sensor (APPS)

OEM Part Numbers: 3970084, 53031575AH

Notes: For use with automatic transmissions.

Year Range:

1998–2003

Application:

5.9L ISB with VP44

AP63427



Accelerator Pedal Position Sensor (APPS)

OEM Part Numbers: 3970085, 53031576AD

Notes: For use with manual transmissions.

Year Range:

1998–2003

Application:

5.9L ISB with VP44

AP63458



Accelerator Pedal Position Sensor (APPS)

Notes: For use with automatic or manual transmissions.

Year Range:

1998–2003

2003–2004

Application:

5.9L ISB with VP44

5.9L ISB with Common Rail

Sensors *continued*

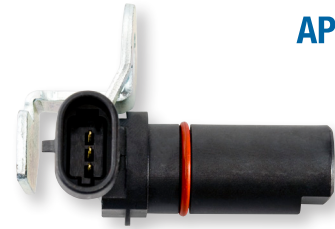
Crankshaft Position (CKP) Sensor

OEM Part Number: 4921601

Year Range:
1998–2003

Application:
5.9L ISB with VP44

AP63453



Seal and Gasket Kits

Valve Cover Gasket

OEM Part Numbers: 3935878, 5016356AB

Year Range:
1998–2003

Application:
5.9L ISB with VP44

AP0012



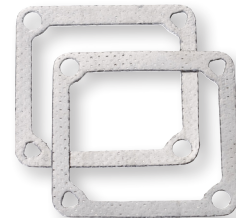
Intake Grid Heater Gaskets

OEM Part Number: 3969988

Year Range:
1989–1998
1998–2003
2003–2006

Application:
5.9L B-Series, 12-Valve
5.9L ISB with VP44
5.9L ISB with Common Rail

AP0058



Head Gasket Kit

Notes: Standard head gasket.

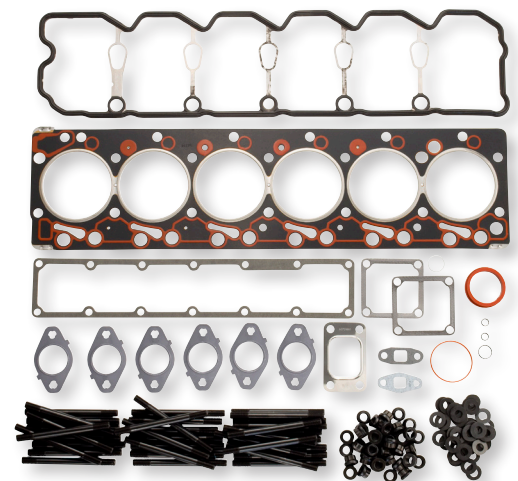
Year Range:
1998–2003

Application:
5.9L ISB with VP44

Kit Contents:

- 1 Head Gasket
- 1 Valve Cover Gasket
- 6 Exhaust Manifold Gaskets
- 1 Intake Manifold Gasket Set
- 1 Turbo Gasket Set
- 1 Coolant Outlet Gasket
- 1 Head Stud Kit

AP0053

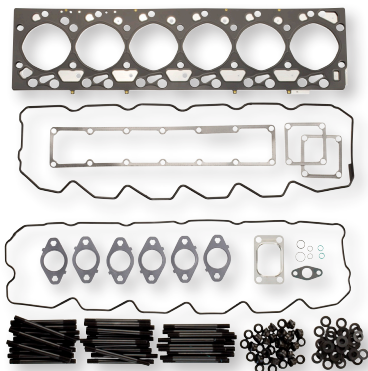


DODGE/CUMMINS

5.9L

Seal and Gasket Kits *continued*

AP0054



Head Gasket Kit

Notes: 1.10 mm head gasket.

Year Range:

2003–2006

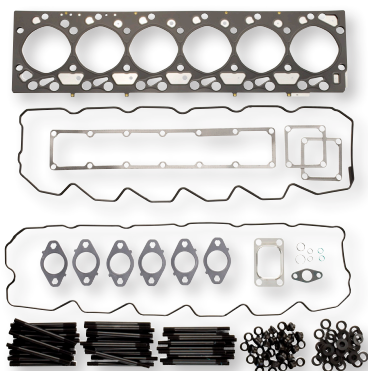
Application:

5.9L ISB with Common Rail

Kit Contents:

- 1 Head Gasket
- 1 Valve Cover Gasket
- 1 Rocker Housing Gasket
- 6 Exhaust Manifold Gaskets
- 1 Intake Manifold Gasket Set
- 1 Turbo Gasket Set
- 1 Head Stud Kit

AP0055



Head Gasket Kit

Notes: 1.20 mm head gasket.

Year Range:

2003–2006

Application:

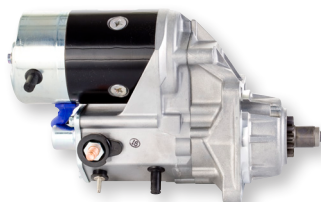
5.9L ISB with Common Rail

Kit Contents:

- 1 Head Gasket
- 1 Valve Cover Gasket
- 1 Rocker Housing Gasket
- 6 Exhaust Manifold Gaskets
- 1 Intake Manifold Gasket Set
- 1 Turbo Gasket Set
- 1 Head Stud Kit

Engine Accessories

228000–2292



Starter

OEM Part Numbers: 3921682, 5016522AA

Year Range:

1994–1998

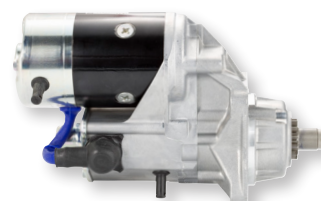
1998–2002

Application:

5.9L B-Series, 12-Valve

5.9L ISB with VP44

428000–5940



Starter

OEM Part Numbers: 4090084, 5086932AA

Year Range:

2003–2006

Application:

5.9L ISB with Common Rail

Engine Components

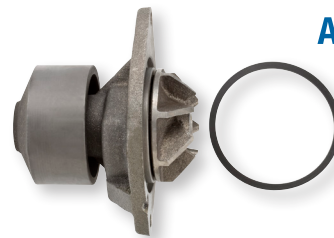
Water Pump

OEM Part Numbers: 2881804, 68003402AA, 4955359

Notes: Includes mounting gasket.

Year Range:
2007–2012

Application:
6.7L ISB



AP63533

***All Alliant Power Products
are Backed with a 13–Month,
Unlimited Mileage Warranty***



SPRINTER/JEEP



SPRINTER/JEEP

2.7L and 3.0L

Engine Components

AP63600



Water Pump

OEM Part Numbers: 5103576AA, 6112001101

Notes: Includes two mounting gaskets.

Year Range:
2002–2003

Engine:
2.7L OM 612

Application:
Sprinter 2500 / 3500

AP63601



Water Pump

OEM Part Numbers: 5138057AA, 6472000101

Notes: Includes mounting gasket.

Year Range:
2004–2006

Engine:
2.7L OM 647

Application:
Sprinter 2500 / 3500

Filters

AP61000



Oil Filter Element Service Kit

OEM Part Numbers: 0011849425, 5086301AA, 1121840025, 6111800009, A6111800009

Year Range:
2002–2003
2004–2006

Engine:
2.7L OM 612
2.7L OM 647

Application:
Sprinter 2500 / 3500
Sprinter 2500 / 3500

AP61001



Oil Filter Element Service Kit

OEM Part Numbers: 5175571AA, 6421800009, A6421800009

Year Range:
2007–2014
2007–2008

Engine:
3.0L OM 642
3.0L OM 642

Application:
Sprinter 2500 / 3500
Jeep Grand Cherokee

Filters continued

Fuel Filter without WIF Sensor

OEM Part Numbers: 5103577AA, 6120920001, A6120920001

Notes: WIF sensor can be transferred from old filter to new filter.

Year Range:	Engine:	Application:
2002–2003	2.7L OM 612	Sprinter 2500 / 3500



AP61002

Fuel Filter without WIF Sensor

OEM Part Numbers: 5117492AA, 5170896AB, 5175425AB, 5175429AB, 6460920701, 6460900252, 6460920201, 6460920601

Notes: WIF sensor can be transferred from old filter to new filter.

Year Range:	Engine:	Application:
2004–2006	2.7L OM 647	Sprinter 2500 / 3500
2007–2009	3.0L OM 642	Sprinter 2500 / 3500
2007–2008	3.0L OM 642	Jeep Grand Cherokee



AP61003

Fuel Filter without WIF Sensor

OEM Part Number: 6420920301

Notes: WIF sensor can be transferred from old filter to new filter.

Year Range:	Engine:	Application:
2010–2012	3.0L OM 642	Sprinter 2500 / 3500



AP61005

***For Additional Information
such as OEM Cross Reference
and Product Instructions
Please Visit alliantpower.com***



JOHN DEERE



4.5L and 6.8L

High-Pressure Common Rail (HPCR)

AP52800



Remanufactured Common Rail Injector*

OEM Part Numbers: RE516540, RE519730, RE507860, SE501924, 095000-5050

AP52801

Remanufactured Common Rail Injector*

OEM Part Numbers: RE546781, RE524382, RE529118, SE501926, 095000-6490

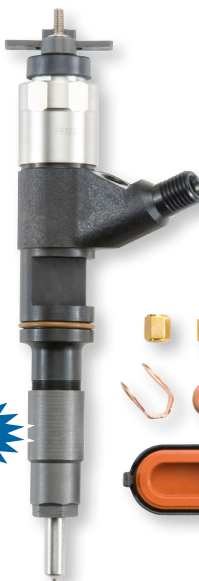
AP52806



Remanufactured Common Rail Injector*

OEM Part Numbers: RE546782, RE529414, RE529117, SE501927, 095000-6500

AP52802



Remanufactured Common Rail Injector*

OEM Part Numbers: RE546784, RE531209, RE530362, SE501925, 095000-6310

AP52803



Remanufactured Common Rail Injector*

OEM Part Numbers: RE546783, RE531210, RE530361, SE501928, 095000-6320

Notes for AP52800 to AP52807: Packaged with its corresponding trim codes and includes the necessary components needed for installation.

4.5L and 6.8L

High-Pressure Common Rail (HPCR)

Remanufactured Common Rail Injector*

OEM Part Numbers: RE546780, RE533454, RE532216, SE501934, 095000-6880

AP52804

Remanufactured Common Rail Injector*

OEM Part Numbers: RE534111, RE533505, SE501933, 095000-7150

Notes: 6.8L only.

AP52805

Remanufactured Common Rail Injector*

OEM Part Numbers: RE545562, RE543351, SE502671, 095000-0590

AP52807

Notes for AP52800 to AP52807: Packaged with its corresponding trim codes and includes the necessary components needed for installation.



***All John Deere Products
are Backed with a 13-Month,
Unlimited Hour Warranty***

* Indicates products with a core charge.

8.1L

High-Pressure Common Rail (HPCR)

AP50800

Remanufactured Common Rail Injector*

OEM Part Numbers: RE524361, RE518726, SE501936, 095000-5150, 095000-7560

AP50801

Remanufactured Common Rail Injector*

OEM Part Numbers: RE524368, RE501010, SE501940, 095000-0550

AP50802



Remanufactured Common Rail Injector*

OEM Part Numbers: RE524360, SE501935, 095000-5230

AP50803



Remanufactured Common Rail Injector*

OEM Part Numbers: RE524362, RE518725, RE504181, SE501937, 095000-5160

AP50804

Remanufactured Common Rail Injector*

OEM Part Numbers: RE524369, SE501941, 095000-0540

AP50805

Remanufactured Common Rail Injector*

OEM Part Numbers: RE524364, RE518723, SE501939, 095000-5190

Notes for AP50800 to AP50805: Includes the necessary components needed for installation.

High-Pressure Common Rail (HPCR)**Remanufactured Common Rail Injector***

OEM Part Numbers: RE546776, RE528407, RE529149, SE501947, 095000-6480

AP51800**Remanufactured Common Rail Injector***

OEM Part Numbers: RE543605, RE543352, SE502556, 095000-0610

AP51801**Remanufactured Common Rail Injector***

OEM Part Numbers: RE546777, RE528408, RE529151, SE501948, 095000-6471

AP51802**Remanufactured Common Rail Injector***

OEM Part Numbers: RE543606, RE543354, SE502557, 095000-0600

AP51803

Notes for AP51800 to AP51803: Packaged with its corresponding trim codes and includes the necessary components needed for installation.

***All John Deere Products
are Backed with a 13-Month,
Unlimited Hour Warranty***

* Indicates products with a core charge.



TOOLS



Diagnostic / Testing

AP0037



Pressure Test Kit

Notes: Used to test low-pressure fuel and oil systems. Also used to perform a leak test on high-pressure oil systems.

Year Range:

1994–2003
2003–2010
2006–2010
1994–2004
2003–2007
2006
2007–2010

Application:

Ford 7.3L
Ford 6.0L
Ford 4.5L LCF
Navistar T444E
Navistar VT365
Navistar VT275
Navistar MaxxForce 5



AP0074



Injector Test Kit

Notes: Used in testing Ford 6.4L and MaxxForce 7 (pre-2010 emissions) injectors on the Bosch EPS 205 Test Bench.

AP0075



Replacement O-ring for Injector Test Kit

Notes: Replacement O-ring for AP0074 Injector Test Kit.

Disassembly / Assembly

AP0017



G2.8 Injector Connector Removal Tool

Notes: Used for the removal of the Remanufactured G2.8 Injector (AP60900 and AP60901) from the engine.

Year Range:

2003–2010
2006–2010
2003–2007
2006
2007–2010

Application:

Ford 6.0L
Ford 4.5L LCF
Navistar VT365
Navistar VT275
Navistar MaxxForce 5

Disassembly / Assembly *continued*

High-Pressure Oil Rail Socket

AP0069

Notes: Required for installation of AP0070 High-Pressure Oil Rail Seal Kit.

Year Range:	Application:
2003–2010	Ford 6.0L
2006–2010	Ford 4.5L LCF
2003–2007	Navistar VT365
2006	Navistar VT275
2007–2010	Navistar MaxxForce 5



Fuel Injector Harness Tool

AP0077

Year Range:	Application:
2008–2010	Ford 6.4L
2008–2014	Navistar MaxxForce 7



Glow Plug Harness Tool

AP0078

Year Range:	Application:
2003–2010	Ford 6.0L, Navistar VT365



Quick Release Coupler Tool

AP0079

Year Range:	Application:
2003–2010	Ford 6.0L, Navistar VT365



Fan Clutch Nut Wrench

AP0080

Year Range:	Application:
1994–2003	Ford 7.3L
2003–2010	Ford 6.0L
2008–2010	Ford 6.4L
2010–2015	Ford 6.7L
2006–2010	Ford 4.5L LCF



Fan Pulley Holding Wrench

AP0081

Year Range:	Application:
1994–2003	Ford 7.3L
2006–2010	Ford 4.5L LCF



Fan Pulley Holding Tool

AP0082

Year Range:	Application:
2003–2010	Ford 6.0L



Disassembly / Assembly *continued*

AP0089



Fan Clutch Wrench Kit

Year Range:

1994–2003
2003–2010
2008–2010
2010–2015
2006–2010

Application:

Ford 7.3L
Ford 6.0L
Ford 6.4L
Ford 6.7L
Ford 4.5L LCF

Cleaning / Prep

AP0083



Injector Brush Kit

Year Range:

2003–2015

Application:

Dodge/Cummins 5.9L, 6.7L

AP0084



Injector Brush Kit

Year Range:

1994–2003
1994–2014
1998–2006

Application:

Ford 7.3L
Navistar T444E, DT466, MaxxForce DT / 9 / 10 / N9 / N10
Caterpillar 3126, C7, C9

AP0085



Injector Brush Kit

Year Range:

2003–2015
2003–2014
2003–2015

Application:

Ford 4.5L, 6.0L, 6.4L, 6.7L
Navistar VT365, VT275, MaxxForce 5 / 7
GM 6.6L

OEM PART NUMBER CROSS REFERENCE

OEM Part Number	AP Part Number	Page(s)	OEM Part Number	AP Part Number	Page(s)	OEM Part Number	AP Part Number	Page(s)
0 580 464 074	69136	5	1821752C1	AP63800AA	48	1825899C93	AP63400	51
0011849425	AP61000	108	1821836C3	AP63800AA	48	1826458C92	HP022X	74
095000-0540	AP50804	114	1821935C3	AP63580	74	1826634C94	AP63405	51
095000-0550	AP50801	114	1822631C91	PFF4595	54	1826703C1	AP0014	54
095000-0590	AP52807	113	1822800C95	AP63800AA	48	1826794C93	APM61067	49
095000-0600	AP51803	115	1822801C91	AP63800AA	48	1828345C91	AP63412	57, 67, 84
095000-0610	AP51801	115	1822803C1	AP63801AB	48	1829336C1	AP63809BE	72
095000-5050	AP52800	112	1822890C1	AP63802AC	48	1829837C2	AP63809BE	72
095000-5150	AP50800	114	1823561C1	AP63801AB	48	1829838C94	AP63809BE	72
095000-5160	AP50803	114	1823736C94	AP63805BA	72, 78	1829839C93	AP63809BE	72
095000-5190	AP50805	114	1823751C91	AP63803AD	48	1829856C91	AP63402	51, 75
095000-5230	AP50802	114	1824415C93	APM61067	49	1829926C2	AP63809BE	72
095000-6310	AP52802	112	1824455C94	AP63802AC	48	1830094C92	AP63812BJ	73, 78
095000-6320	AP52803	112	1824456C96	AP63802AC	48	1830145C91	AP63810BF	72, 78
095000-6471	AP51802	115	1824472C1	AP63802AC	48	1830146C94	AP63810BF	72, 78
095000-6480	AP51800	115	1824473C2	AP63802AC	48	1830147C2	AP63810BF	72, 78
095000-6490	AP52801	112	1824474C2	AP63802AC	48	1830148C2	AP63810BF	72, 78
095000-6500	AP52806	112	1824582C94	AP63801AB	48	1830155C91	BG	73
095000-6880	AP52804	113	1824583C97	AP63801AB	48	1830156C91	BG	73
095000-7150	AP52805	113	1824739C1	AP63806BB	72	1830157C1	BG	73
095000-7560	AP50800	114	1824740C1	AP63807BC	72	1830158C1	BG	73
1121840025	AP61000	108	1824741C2	AP63808BD	72, 78	1830177C92	HP020X	74
12085499	AP0022	91	1824742C91	AP63806BB	72	1830317C1	AP0006	77, 86
12496472	AP63420	91	1824743C91	AP63807BC	72	1830559C91	AP63811BI	73, 78
12530176	AP63560	90	1824744C94	AP63808BD	72, 78	1830560C2	AP63811BI	73, 78
12555492	AP63419	91	1824839C94	AP63809BE	72	1830561C92	AP63811BI	73, 78
12556231	AP63561	90	1824908C1	AP63464	76	1830562C2	AP63811BI	73, 78
12557046	AP63444	91	1824917C2	AP63805BA	72, 78	1830570C91	BG	73
12637105	AP63563	94	1824918C2	AP63806BB	72	1830570C92	AP63812BJ	73, 78
15019994	AP63457	94	1824919C2	AP63807BC	72	1830571C2	AP63812BJ	73, 78
15019995	AP63457	94	1824920C2	AP63808BD	72, 78	1830572C93	AP63812BJ	73, 78
15161174	AP63442	93	1824928C94	AP63805BA	72, 78	1830573C2	AP63812BJ	73, 78
15320904	AP0067	92	1824929C94	AP63806BB	72	1830573C2	BG	73
15754298	AP63441	90	1824930C94	AP63807BC	72	1830606C94	AP63580	74
15821962	AP63442	93	1824931C94	AP63808BD	72, 78	1830669C92	AP63465	75
1807329C92	AP63418	51	1824982C91	AP63401	51, 75	1830691C1	AP63813BN	73, 79
1807369C2	AP63466	75	1825125C1	AP63801AB	48	1830692C91	AP63813BN	73, 79
1814376C1	AP63411	49	1825126C1	AP63801AB	48	1830693C1	AP63813BN	73, 79
1815904C2	AP63452	49, 74	1825186C91	AP63409	49	1830694C93	AP63813BN	73, 79
1815923C92	AP63414	53	1825247C91	HP004X	50	1830740C92	AP63811BI	73, 78
1816187C3	AP63800AA	48	1825248C91	HP005X	50	1830741C92	AP63811BI	73, 78
1817687C92	AP63580	74	1825259C91	HP005X	50	1830844C93	AP63413	53
1818259C2	AP63800AA	48	1825260C91	HP004X	50	1830857C91	HP007X	50
1818350C2	AP0013	54	1825271C93	HP004X	50	1831196C92	AP63410	49, 55
1818778C3	AP63434	74	1825602C91	AP0036	77	1831259C91	AP63435	58
1819834C1	AP63805BA	72, 78	1825681C95	HP021X	74	1831449C91	HP008X	50
1820909C1	AP0036	77	1825806C91	AP0003	53, 76	1831487C92	AP63803AD	48

OEM PART NUMBER CROSS REFERENCE

OEM Part Number	AP Part Number	Page(s)	OEM Part Number	AP Part Number	Page(s)	OEM Part Number	AP Part Number	Page(s)
1831488C1	AP63803AD	48	1842226C91	AP66979	80	1855860C94	AP63641	66
1831489C12	AP63803AD	48	1842423C97	AP63682	82	1856010C95	AP63515	69
1831550C14	AP63803AD	48	1842424C2	AP63682	82	1856011C95	AP63516	70
1831551C13	AP63803AD	48	1842425C96	AP63683	82	1858088C92	AP0057	63
1831646C1	AP63405	51	1842426C2	AP63683	82	1871291C4	AP63682	82
1831658C91	AP63461	54	1842576C93	AP66976	80	1871292C96	AP63682	82
1831676C92	AP63581	49	1842577C93	AP66977	80	1873400C92	AP63422	68
1832092C92	AP63684	83	1842578C94	AP66978	80	1873422C93	AP64900	66
1832092C92	AP63686	83	1842579C94	AP66979	80	1873425C93	AP0027	70
1832093C2	AP63684	83	1842614C91	AP63682	82	1875838C91	AP63463	59, 68
1832093C2	AP63686	83	1842617C91	AP63683	82	1876105C95	AP63684	83
1832094C92	AP63685	83	1842624C92	AP0026	86	1876106C94	AP63685	83
1832094C92	AP63687	83	1842626C95	AP0025	86	1876529C98	AP63641	66
1832095C2	AP63685	83	1842664C92	AP63582	82	1876540C92	AP63483	71
1832095C2	AP63687	83	1842665C93	AP63582	82	1876735C91	AP63400	51
1833564C92	AP0001	53, 76, 79	1842721C91	HP021X	74	1876736C91	AP63491	50
1833639C1	AP63804AE	48	1842722C91	HP020X	74	1877748C1	AP60901	55
1833640C1	AP63804AE	48	1842723C91	HP022X	74	1878281C92	AP60900	55
1833644C1	AP63804AE	48	1843057C92	PFF31795	64	1878282C91	AP60900	55
1833645C1	AP63804AE	48	1843089C91	AP60900	55	1878284C91	AP60901	55
1833646C92	AP63804AE	48	1843481C95	AP60900	55	1878285C91	AP60901	55
1833647C91	AP63804AE	48	1843682C91	AP0002	62	1878865C91	AP63661	56
1833798C91	AP63401	51, 75	1844751C2	AP60901	55	1879743C93	AP63684	83
1835985C92	AP63415	57, 67, 84	1845002C91	AP63583	56	1879743C93	AP63686	83
1836250C1	AP63814BP	73, 79	1845145C99	AP63446	56	1879744C2	AP63684	83
1836251C91	AP63814BP	73, 79	1845150C92	AP60901	55	1879744C2	AP63686	83
1836252C91	AP63814BP	73, 79	1845274C92	AP63407	58	1879745C93	AP63687	83
1836253C1	AP63814BP	73, 79	1845428C92	AP63460	59	1879747C2	AP63687	83
1836412C91	AP63402	51, 75	1845427C2	AP63460	59	1879998C91	AP60901	55
1836537C91	AP63437	58, 68, 84	1845879C91	AP60900	55	1880313C94	AP63663	57
1836539C91	AP63462	59, 84	1845988C1	AP63470	68	1882258C93	AP63686	83
1838250C1	AP0023	62	1846057C1	AP63417	60	1882259C93	AP63685	83
1838828C91	HP032X	57	1846296C91	AP63459	60	1882259C93	AP63687	83
1839437C95	AP63416	60	1846480C2	AP63423	58, 68, 84	1882919C92	AP63661	56
1840053C97	AP63481	64	1846481C92	AP63476	59, 69, 85	1883110C1	AP64901	66
1840078C1	AP63429	75	1846491C91	AP63438	60	1883111C92	AP64901	66
1840702C97	AP63447	64	1846692C92	AP60901	55	1883888C93	AP63682	82
1840754C91	RK31821	65, 71	1847321C1	AP0042	70	1884057C92	AP66957	81
1840778C91	AP0005	62	1847913C91	AP63423	68	1884058C2	AP66957	81
1840903C91	AP63479	60	1848489C91	AP66989	80	1884357C92	AP63662	57
1841086C91	AP63402	51, 75	1848492C91	AP66992	80	1885000C93	AP63683	82
1841217C91	AP63402	51, 75	1848495C91	AP66995	81	1885043C92	AP63680	82
1841279C91	AP63401	51, 75	1848718C92	AP66918	81	1885044C2	AP63680	82
1841491C91	AP66976	80	1848721C92	AP66921	81	1885045C92	AP63681	82
1842223C91	AP66976	80	1850352C2	AP63408	58	1885046C2	AP63681	82
1842224C91	AP66977	80	1850353C1	AP63403	51, 58	1885819C92	AP63456	69
1842225C91	AP66978	80	1855644C3	AP0027	70	1886511C93	AP63451	56

OEM PART NUMBER CROSS REFERENCE

OEM Part Number	AP Part Number	Page(s)	OEM Part Number	AP Part Number	Page(s)	OEM Part Number	AP Part Number	Page(s)
1886547C1	AP0027	70	2593596C91	AP63812BJ	73, 78	3C3Z8575AA	AP63496	17
1888560C1	AP63471	68, 84	2593596C91	BG	73	3C3Z9229AA	AP0002	24
1888696C93	AP0035	63	2593597C91	AP63813BN	73, 79	3C3Z9433BE	AP63447	26
1889249C91	AP63581	49	2881804	AP63533	105	3C3Z9433BH	AP63447	26
1889323C93	AP63680	82	2C2Z12B599A	AP65120	5	3C3Z9A543AARM	HP032X	18
1889324C92	AP63681	82	2C3Z8V501BA	AP63501	6	3C3Z9C407AB	AP63426	27
1889905C91	AP63464	76	2C3Z9C968BA	AP63401	9	3C3Z9C968AA	AP63416	21
1890055C92	AP66955	81	2C3Z9G804AB	AP0011	12	3C3Z9E527ABRM	AP60900	15
1890056C2	AP66955	81	2L1Z9F479AA	AP63495	20	3C3Z9E527AE	AP60900	15
1890057C92	AP66958	81	3035342	AP3035342	100	3C3Z9E527EARM	AP60900	15
1890058C2	AP66958	81	3035344	AP3035344	100	3C3Z9E527EBRM	AP60900	15
1897455C93	AP63484	71	30360R1	AP63464	76	3C3Z9E527ECRM	AP60900	15
1899239C92	AP64901	66	3286277	AP63531	102	3C3Z9F838EA	AP63407	20
19113733	AP63562	94	3286278	AP63531	102	3C3Z9G270AA	PFF31795	27
19168610	AP63560	90	336-1737	S14-101DAM	97	3C3Z9H529A	AP0035	24
19168888	AP63562	94	35976	AP63485	92	3C3Z9P455AB	AP0005	24
1997227	AP63443	91	38172	AP63449	97	3C3Z9T514AG	AP63481	26
1C3Z6A642AA	AP63452	6	3800984	AP63532	102	3C3Z9T517AG	AP0086	25
1C3Z6C610BA	AP0004	11	3901425	AP63478	101	3F1Z12A648A	AP63436	8
1C3Z6K649BA	AP0004	11	3904374	AP63478	101	3L3Z12B579ARM	AP63494	21
1C3Z9D477AA	AP63404	6	3921558	AP63467	101	4024808	AP4024808	100
1C3Z9J460AA	AP63429	8	3921682	228000-2292	104	4024809	AP4024809	100
212-366	AP63420	91	3928143	AP63478	101	4090084	428000-5940	104
213-337	AP63444	91	3935878	AP0012	103	40736	AP63486	92
214-1073	AP63443	91	3936316	AP4988747	101	4307212R91	AP66921	81
215-115	AP63701	92	3957544	AP63467	101	4307291R91	AP63641	66
215-479	AP63702	93	3966154	AP63478	101	4307325R91	AP63662	57
251-590	AP63560	90	3969705 (Hose)	AP4089602	101	4307327R91	AP63663	57
251-603	AP63561	90	3969988	AP0058	103	4307369R91	AP64900	66
251-674	AP63562	94	3970084	AP63428	102	4307381R91	AP64900	66
251-723	AP63562	94	3970085	AP63427	102	4713985AB	AP63467	101
251-738	AP63563	94	3970880	AP63478	101	4891252	AP63532	102
252-776	AP63561	90	3990082	AP4943048	101	4921601	AP63453	103
252-838	AP63562	94	3990105	AP4943048	101	4932707	AP4943048	101
2503701C91	HP004X	50	3C3U11000AB	AP83006	27	4935730	AP4943048	101
2503703C91	HP005X	50	3C2Z6B209AA	AP63448	26	4944710	AP4988747	101
2503704C91	HP007X	50	3C2Z6B209BA	AP63432	26	4955359	AP63533	105
25117340	AP63440	90	3C3Z10884AA	AP63437	19, 32	4983584	AP63478	101
2589446C91	HP008X	50	3C3Z11002AA	AP83006	27	4988747	AP4988747	101
2593588C91	AP63805BA	72, 78	3C3Z12A697AA	AP63462	20	4C2Z2A451AA	AP63703	27
2593589C91	AP63806BB	72	3C3Z12K073AA	AP63415	19, 31	4C2Z6766BA	RK32138	28
2593590C91	AP63807BC	72	3C3Z6584BA	AP0023	24	4C3Z12B599AB	AP65122	16
2593591C91	AP63808BD	72, 78	3C3Z6766CA	RK31821	28, 37	4C3Z12B599AB	AP65123	16
2593592C91	AP63809BE	72	3C3Z6A642CA	AP63451	17	4C3Z12B599AB	AP65124	16
2593593C91	AP63810BF	72, 78	3C3Z6C315AA	AP63412	19, 31	4C3Z12B599ABRM	AP65122	16
2593594C91	AP63811BI	73, 78	3C3Z7H141AA	AP63497	21	4C3Z12B599ABRM	AP65123	16
2593595C91	AP63811BI	73, 78	3C3Z8501A	AP63502	17	4C3Z12B599ABRM	AP65124	16

OEM PART NUMBER CROSS REFERENCE

OEM Part Number	AP Part Number	Page(s)	OEM Part Number	AP Part Number	Page(s)	OEM Part Number	AP Part Number	Page(s)
4C3Z2A451BA.....	AP63433.....	13, 26	5C3Z9J460B.....	AP63408.....	20	8C3Z12A697B.....	AP63463.....	20, 32
4C3Z8501AC.....	AP63503.....	17	5C3Z9VE527ARM.....	AP63804AE.....	4	8C3Z12B591A.....	AP63470.....	32
4C3Z8A616AA.....	AP63430.....	26	5C3Z9VE527BRM.....	AP63803AD.....	4	8C3Z12B591E.....	AP63471.....	32
4C3Z9A543AARM.....	HP032X.....	18	5C4Z9A543A.....	AP63661.....	18	8C3Z12K073A.....	AP63415.....	19, 31
4C3Z9E527AA.....	AP60901.....	15	5C4Z9A543B.....	AP63661.....	18	8C3Z8501B.....	AP63504.....	30
4C3Z9E527BRM.....	AP60901.....	15	6111800009.....	AP61000.....	108	8C3Z8575D.....	AP63498.....	30
4C3Z9F452A.....	AP63438.....	21	6112001101.....	AP63600.....	108	8C3Z8A616S.....	AP63518.....	36
4C3Z9F452ARM.....	AP63438.....	21	6120920001.....	AP61002.....	109	8C3Z9229A.....	AP0027.....	34
4C3Z9F838A.....	AP63460.....	20	6420920301.....	AP61005.....	109	8C3Z9A543B.....	AP63640.....	30
4C3Z9F838AB.....	AP63460.....	20	6421800009.....	AP61001.....	108	8C3Z9A543DRM.....	AP63640.....	30
4C3Z9J460A.....	AP63403.....	8, 19	6460900252.....	AP61003.....	109	8C3Z9D475D.....	AP63456.....	33
4C3Z9P456AC.....	AP63446.....	16	6460920201.....	AP61003.....	109	8C3Z9D476A.....	AP0042.....	35
4C3Z9P456AF.....	AP63446.....	16	6460920601.....	AP61003.....	109	8C3Z9D930AA.....	AP63515.....	34
4C3Z9P456AH.....	AP63446.....	16	6460920701.....	AP61003.....	109	8C3Z9D930BA.....	AP63516.....	34
4C3Z9P456AJ.....	AP63446.....	16	6472000101.....	AP63601.....	108	8C3Z9E527A.....	AP64900.....	29
4R8Z12A697A.....	AP63544.....	41	68003402AA.....	AP63533.....	105	8C3Z9E527DRM.....	AP64900.....	29
5010118R91.....	AP63503.....	56	632Z11002AA.....	AP83006.....	27	8C3Z9F459A.....	AP63520.....	29
5010359R93.....	AP64900.....	66	6C2Z9G282AA.....	AP63431.....	27	8C3Z9F479A.....	AP63476.....	33
5010561R91.....	AP66918.....	81	6C3A2A451BA.....	AP63433.....	13, 26	8C3Z9G282A.....	AP63450.....	37
5010656R92.....	AP66976.....	80	6C3Z2A451A.....	AP63433.....	13, 26	8C3Z9G756A.....	AP63422.....	31
5010657R92.....	AP66977.....	80	6C3Z6C640A.....	AP63455.....	17	8C3Z9J460A.....	AP63423.....	31
5010658R92.....	AP66978.....	80	6C3Z6C640AA.....	AP63455.....	17	8C3Z9J460D.....	AP63473.....	32
5010659R92.....	AP66979.....	80	6C3Z6C640C.....	AP63454.....	17	8C3Z9T514C.....	AP63482.....	35
5010736R91.....	AP63680.....	82	6C3Z6C640CA.....	AP63454.....	17	8E7Z9A543CRM.....	AP63663.....	18
5010755R91.....	AP63681.....	82	6C3Z9C407AA.....	AP63426.....	27	97188720.....	AP63720.....	93
5010755R92.....	AP63680.....	82	6C3Z9G282AA.....	AP63426.....	27	97188721.....	AP63721.....	93
5016356AB.....	AP0012.....	103	6C3Z9G282C.....	AP63431.....	27	97188722.....	AP63722.....	94
5016522AA.....	228000-2292.....	104	6E7Z9A543BRM.....	AP63662.....	18	97188723.....	AP63723.....	94
5086301AA.....	AP61000.....	108	6U5Z9278D.....	AP63539.....	40	97216136.....	AP63562.....	94
5086932AA.....	428000-5940.....	104	7080839C92.....	AP63642.....	67	97228929.....	AP0059.....	93
5103576AA.....	AP63600.....	108	7081021C1.....	AP63480.....	67	97288625.....	AP63449.....	97
5103577AA.....	AP61002.....	109	7093938C91.....	AP63680.....	82	97329062.....	AP63449.....	97
5117492AA.....	AP61003.....	109	7093939C91.....	AP63681.....	82	98017645.....	PFF50216.....	97
5138057AA.....	AP63601.....	108	7849209.....	AP63701.....	92	98031233.....	AP63563.....	94
5170896AB.....	AP61003.....	109	7C3Z11002AA.....	AP83007.....	36	98045055.....	AP0050.....	96
5175425AB.....	AP61003.....	109	7C3Z12B579A.....	AP63475.....	33	98045056.....	AP0051.....	96
5175429AB.....	AP61003.....	109	7C3Z6B209B.....	AP63517.....	36	98045057.....	AP0052.....	96
5175571AA.....	AP61001.....	108	7C3Z6B209E.....	AP63519.....	36	98045058.....	AP0047.....	96
53031575AH.....	AP63428.....	102	7C3Z8A616F.....	AP63499.....	36	98045059.....	AP0048.....	96
53031576AD.....	AP63427.....	102	7C3Z8B552A.....	AP63472.....	29	98045060.....	AP0049.....	96
5C3Z12224A.....	AP0021.....	10, 22, 34	7E7Z9J460AA.....	AP63423.....	31	98094201.....	AP63449.....	97
5C3Z9A543ARM.....	AP63661.....	18	88864234.....	S14-101DAM.....	97	9C2Z9G282A.....	AP63431.....	27
5C3Z9A543C.....	AP63661.....	18	88894035.....	AP63561.....	90	9C3Z7H141A.....	AP63497.....	33
5C3Z9C968CA.....	AP63417.....	21	88894036.....	AP63560.....	90	9U2Z12A648A.....	AP63490.....	7
5C3Z9F452AA.....	AP63439.....	21	89003343.....	AP63449.....	97	A6111800009.....	AP61000.....	108
5C3Z9F452ARM.....	AP63439.....	21	89017558.....	AP63702.....	93	A6120920001.....	AP61002.....	109
5C3Z9J460A.....	AP63408.....	20	8C349F479AA.....	AP63476.....	33	A6421800009.....	AP61001.....	108

OEM PART NUMBER CROSS REFERENCE

OEM Part Number	AP Part Number	Page(s)	OEM Part Number	AP Part Number	Page(s)	OEM Part Number	AP Part Number	Page(s)
AC2Z2A451A.....	AP63703.....	27	BRPV-22.....	AP63725.....	43	DY984.....	AP63462.....	20
AE5Z12A647A.....	AP63493.....	19, 31, 40	BT122.....	AP63519.....	36	DY985.....	AP63412.....	19, 31
AFLS166.....	AP63524.....	41	BT131.....	AP63538.....	43	EP1000.....	AP63441.....	90
AFLS179.....	AP63475.....	33	BT50.....	AP63421.....	12	EP1001.....	AP63442.....	93
AFLS181RM.....	AP63494.....	21	BT91.....	AP63517.....	36	EP1020.....	AP63442.....	93
AU5Z12A647B.....	AP63545.....	39	CM5054.....	AP63416.....	21	EP309.....	AP63440.....	90
BC3Z10346A.....	AP83009.....	43	CM5055.....	AP0002.....	24	F4TZ11002A.....	AP83000.....	13
BC3Z10346B.....	AP83010.....	43	CM5126.....	AP63417.....	21	F4TZ12K073C.....	AP63491.....	7
BC3Z10346C.....	AP83011.....	43	CM5191.....	AP0087.....	42	F4TZ2A451A.....	AP63724.....	13
BC3Z10346D.....	AP83009.....	43	CM5192.....	AP0088.....	42	F4TZ6584A.....	AP0013.....	12
BC3Z11002A.....	AP83008.....	44	CX1679.....	AP63492.....	9	F4TZ6A636A.....	AP0004.....	11
BC3Z12B533A.....	AP63525.....	38	CX1961.....	AP63495.....	20	F4TZ9A543BRM.....	HP004X.....	6
BC3Z12B533B.....	AP63525.....	38	CX2020.....	AP63439.....	21	F4TZ9C968C.....	AP63401.....	9
BC3Z12B579A.....	AP63524.....	41	CX2056.....	AP63438.....	21	F4TZ9C968CB.....	AP63401.....	9
BC3Z12K073A.....	AP63535.....	39	CX2161.....	AP63476.....	33	F4TZ9D930K.....	AP63414.....	11
BC3Z2A451A.....	AP63725.....	43	CX2404.....	AP63522.....	42	F4TZ9F479A.....	AP63489.....	8
BC3Z2A451B.....	AP63725.....	43	CX2405.....	AP63523.....	42	F4TZ9F538A.....	AP63411.....	6
BC3Z5J225L.....	AP63521.....	41	CX2432.....	AP63543.....	41	F4TZ9VE527AARM.....	AP63800AA.....	4
BC3Z6B209A.....	AP63538.....	43	CX2466RM.....	AP63439.....	21	F5AZ12A648AB.....	AP63436.....	8
BC3Z6B209B.....	AP63538.....	43	CX2467RM.....	AP63438.....	21	F5TU11000AA.....	AP83000.....	13
BC3Z6C315A.....	AP63534.....	40	D1808A.....	AP63419.....	91	F5TU11000AB.....	AP83000.....	13
BC3Z7H141A.....	AP63497.....	41	DC3Z9J460D.....	AP63528.....	40	F5TU11000AD.....	AP83000.....	13
BC3Z8501A.....	AP63507.....	39	DPFE1.....	AP63429.....	8	F5TZ9151A.....	AP0008.....	11
BC3Z8501B.....	AP63505.....	39	DPFE3.....	AP63403.....	8, 19	F5TZ9G270A.....	RK31019.....	14
BC3Z8501C.....	AP63506.....	39	DPFE6.....	AP63408.....	20	F5TZ9J294A.....	AP63409.....	5
BC3Z8575A.....	AP63540.....	38	DPFE7.....	AP63423.....	31	F61Z9VE527BRM.....	AP63801AB.....	4
BC3Z8575B.....	AP63541.....	38	DPFE8.....	AP63423.....	31	F61Z9VE527ERM.....	AP63804AE.....	4
BC3Z8575C.....	AP63542.....	38	DPFE17.....	AP63473.....	32	F6TZ2A451AA.....	AP63700.....	13
BC3Z8575D.....	AP63540.....	38	DPFE20.....	AP63529.....	41	F6TZ8501AARM.....	AP63501.....	6
BC3Z8A616CC.....	AP63536.....	43	DPFE21.....	AP63537.....	40	F6TZ9155AB.....	AP63424.....	14
BC3Z9229A.....	AP0087.....	42	DPFE22.....	AP63526.....	40	F6TZ9157BA.....	AP0008.....	11
BC3Z9229B.....	AP0088.....	42	DPFE24.....	AP63528.....	40	F6TZ9350A.....	APM61067.....	5
BC3Z9D475C.....	AP63522.....	42	DU87.....	AP63491.....	7	F6TZ9A543ARM.....	HP005X.....	6
BC3Z9D475D.....	AP63523.....	42	DU88.....	AP63415.....	19, 31	F6TZ9C977AN.....	AP0003.....	11
BC3Z9F479B.....	AP63543.....	41	DU92.....	AP63535.....	39	F6TZ9F838A.....	AP63418.....	8
BC3Z9G282E.....	AP63527.....	38	DY1112.....	AP63463.....	20, 32	F7TZ12B533A.....	AP63405.....	9
BC3Z9J460B.....	AP63526.....	40	DY1137.....	AP63493.....	19, 31, 40	F7TZ12B533CA.....	AP63405.....	9
BC3Z9J460C.....	AP63529.....	41	DY1144.....	AP63436.....	8	F7TZ12B599AC.....	AP65110.....	5
BC3Z9J460D.....	AP63537.....	40	DY1145.....	AP63490.....	7	F7TZ12K073A.....	AP63400.....	7
BC3Z9J460E.....	AP63526.....	40	DY1146.....	AP63544.....	41	F7TZ12K073B.....	AP63400.....	7
BC3Z9N184B.....	AP61004.....	44	DY1148.....	AP63534.....	40	F7TZ6A636AAA.....	AP0004.....	11
BRPV-1.....	AP63703.....	27	DY1160.....	AP63545.....	39	F7TZ9E527ARM.....	AP63800AA.....	4
BRPV-5.....	AP63724.....	13	DY1261.....	AP63525.....	38	F7TZ9E527BRM.....	AP63801AB.....	4
BRPV-6.....	AP63700.....	13	DY708.....	AP63489.....	8	F81Z12B533AC.....	AP63405.....	9
BRPV-7.....	AP63433.....	13, 26	DY861.....	AP63405.....	9	F81Z2A451BA.....	AP63433.....	13, 26
BRPV-8.....	AP63725.....	43	DY876.....	AP63406.....	4, 15, 29	F81Z6584AA.....	AP0014.....	12
BRPV-11.....	AP63703.....	27	DY961.....	AP63436.....	8	F81Z6N653BA.....	AP63461.....	12

OEM PART NUMBER CROSS REFERENCE

OEM Part Number	AP Part Number	Page(s)	OEM Part Number	AP Part Number	Page(s)	OEM Part Number	AP Part Number	Page(s)
F81Z8501ARM	AP63501	6	RE507860	AP52800	112	RY383	AP63420	91
F81Z8501CRM	AP63501	6	RE516540	AP52800	112	RY525	AP63405	9
F81Z9155AC	AP63425	14	RE518723	AP50805	114	SA1004	AP83008	44
F81Z9278AA	AP63435	8, 19, 32	RE518725	AP50803	114	SA965	AP83007	36
F81Z9A543BRM	HP007X	7	RE518726	AP50800	114	SE501924	AP52800	112
F81Z9A543CRM	HP008X	7	RE519730	AP52800	112	SE501925	AP52802	112
F81Z9C065AA	AP0007	11	RE524360	AP50802	114	SE501926	AP52801	112
F81Z9C407AC	69136	5	RE524361	AP50800	114	SE501927	AP52806	112
F81Z9C968AA	AP63402	9	RE524362	AP50803	114	SE501928	AP52803	112
F81Z9C968AB	AP63402	9	RE524364	AP50805	114	SE501933	AP52805	113
F81Z9D930AB	AP63413	10	RE524368	AP50801	114	SE501934	AP52804	113
F81Z9E527BRM	AP63801AB	4	RE524369	AP50804	114	SE501935	AP50802	114
F81Z9E527CRM	AP63803AD	4	RE524382	AP52801	112	SE501936	AP50800	114
F81Z9E527DRM	AP63800AA	4	RE528407	AP51800	115	SE501937	AP50803	114
F81Z9E527EARM	AP63804AE	4	RE528408	AP51802	115	SE501939	AP50805	114
F81Z9J294AA	AP63410	5	RE529117	AP52806	112	SE501940	AP50801	114
F8T29229AA	AP0001	11	RE529118	AP52801	112	SE501941	AP50804	114
F8UZ6B209CA	AP63421	12	RE529149	AP51800	115	SE501947	AP51800	115
F8UZ9F479BA	AP63492	9	RE529151	AP51802	115	SE501948	AP51802	115
FD3375	PFF829B	13	RE529414	AP52806	112	SE502556	AP51801	115
FD4495	PFF4595	14	RE530361	AP52803	112	SE502557	AP51803	115
FD4596	PFF4596	14	RE530362	AP52802	112	SE502671	AP52807	113
FD4604	PFF4616	28	RE531209	AP52802	112	SW5267	AP63435	8, 19, 32
FD4606	PFF4606	27	RE531210	AP52803	112	SW6052	AP63437	19, 32
FD4609	PFF4617	37	RE532216	AP52804	113	SW6357	AP63539	40
FG1054	AP63424	14	RE533454	AP52804	113	TP1298B	PFF50216	97
FG1057	AP63425	14	RE533505	AP52805	113	W301386	AP0028	24
FL2016	PFL2016	28, 37	RE534111	AP52805	113	W301390	AP0028	24
GL8754	AP83009	43	RE543351	AP52807	113	W302209	AP0028	24
GL992	AP83009	43	RE543352	AP51801	115	XC3Z12B599AA	AP65120	5
GL993	AP83010	43	RE543354	AP51803	115	XC3Z9E527AARM	AP63804AE	4
GL994	AP83011	43	RE543605	AP51801	115	YB3125	AP63499	36
PFB93	AP63426	27	RE543606	AP51803	115	YB3126	AP63518	36
PFB95	AP63450	37	RE545562	AP52807	113	YB3148	AP63536	43
PFB98	AP63431	27	RE546776	AP51800	115	YB632	AP63430	26
PFB101	AP63426	27	RE546777	AP51802	115	YC3Z12B533AA	AP63406	4, 15, 29
PFB103	AP63527	38	RE546780	AP52804	113	YC3Z9350CA	APM61067	5
PFF5550	PFF4617	37	RE546781	AP52801	112			
PT121	AP0022	91	RE546782	AP52806	112			
PW480	AP63502	17	RE546783	AP52803	112			
PW482	AP63504	30	RE546784	AP52802	112			
PW491	AP63503	17	RT1169	AP63496	17			
PW502	AP63507	39	RT1205	AP63540	38			
PW503	AP63505	39	RT1206	AP63541	38			
PW504	AP63506	39	RT1207	AP63542	38			
RE501010	AP50801	114	RT1212	AP63498	30			
RE504181	AP50803	114	RT1231	AP63540	38			

ALLIANT POWER PART NUMBER INDEX

AP Part Number	Page(s)	AP Part Number	Page(s)	AP Part Number	Page(s)	AP Part Number	Page(s)
69136.....	5	AP0044	25	AP4943048	101	AP63418	8, 51
228000-2292	104	AP0045	95	AP4988747	101	AP63419	91
428000-5940	104	AP0046	95	AP50800*	114	AP63420	91
AP0001	11, 53, 76, 79	AP0047	96	AP50801*	114	AP63421	12
AP0002	24, 62	AP0048	96	AP50802*	114	AP63422	31, 68
AP0003	11, 53, 76	AP0049	96	AP50803*	114	AP63423	31, 58, 68, 84
AP0004	11, 53	AP0050	96	AP50804*	114	AP63424	14
AP0005	24, 62	AP0051	96	AP50805*	114	AP63425	14
AP0006	77, 86	AP0052	96	AP51800*	115	AP63426	27
AP0007	11	AP0053	103	AP51801*	115	AP63427	102
AP0008	11	AP0054	104	AP51802*	115	AP63428	102
AP0009	9, 52	AP0055	104	AP51803*	115	AP63429	8, 75
AP0010	10, 52	AP0056	22, 34, 61, 69, 85	AP52800*	112	AP63430	26
AP0011	12, 53	AP0057	63	AP52801*	112	AP63431	27
AP0012	103	AP0058	103	AP52802*	112	AP63432	26
AP0013	12, 54	AP0059	93	AP52803*	112	AP63433	13, 26
AP0014	12, 54	AP0064	35	AP52804*	113	AP63434	74
AP0015	10, 52	AP0067	92	AP52805*	113	AP63435	8, 19, 32, 58
AP0016	10, 52	AP0068	10, 23, 42, 52, 62, 76, 86, 94	AP52806*	112	AP63436	8
AP0017	118	AP0069	119	AP52807*	113	AP63437	19, 32, 58, 68, 84
AP0018	22, 61, 85	AP0070	25, 63	AP60900*	15, 55	AP63438*	21, 60
AP0019	22, 61, 85	AP0071	35	AP60901*	15, 55	AP63439*	21
AP0020	23, 62, 86	AP0072	70	AP61000	108	AP63440	90
AP0021	10, 22, 34, 52, 61, 69, 76, 85	AP0073	71	AP61001	108	AP63441	90
AP0022	91	AP0074	118	AP61002	109	AP63442	93
AP0023	24, 62	AP0075	118	AP61003	109	AP63443	91
AP0024	91	AP0076	34	AP61004	44	AP63444	91
AP0025	86	AP0077	119	AP61005	109	AP63445*	16, 55
AP0026	86	AP0078	119	AP63400	7, 51	AP63446*	16, 56
AP0027	34, 70	AP0079	119	AP63401	9, 51, 75	AP63447	26, 64
AP0028	24, 63	AP0080	119	AP63402	9, 51, 75	AP63448	26
AP0029	95	AP0081	119	AP63403	8, 19, 51, 58	AP63449	97
AP0030	22, 61	AP0082	119	AP63404	6	AP63450	37
AP0031	23	AP0083	120	AP63405	9, 51	AP63451	17, 56
AP0032	23	AP0084	120	AP63406	4, 15, 29	AP63452	6, 49, 74
AP0033	23	AP0085	120	AP63407	20, 58	AP63453	103
AP0034	92	AP0086	25	AP63408	20, 58	AP63454	17
AP0035	24, 63	AP0087	42	AP63409	5, 49	AP63455	17
AP0036	77	AP0088	42	AP63410	5, 49, 55	AP63456	33, 69
AP0037	118	AP0089	120	AP63411	6, 49	AP63457	94
AP0038	77	AP3035342	100	AP63412	19, 31, 57, 67, 84	AP63458	102
AP0039	24, 63	AP3035344	100	AP63413	10, 53	AP63459	60
AP0040	22, 61	AP4024808	100	AP63414	11, 53	AP63460	20, 59
AP0042	35, 70	AP4024809	100	AP63415	19, 31, 57, 67, 84	AP63461	12, 54
AP0043	25	AP4089602	101	AP63416	21, 60	AP63462	20, 59, 84
				AP63417	21, 60	AP63463	20, 32, 59, 68

* Indicates products with a core charge.

ALLIANT POWER PART NUMBER INDEX

AP Part Number	Page(s)	AP Part Number	Page(s)	AP Part Number	Page(s)	AP Part Number	Page(s)
AP63464	76	AP63524*	41	AP63700	13	AP66958*	81
AP63465	75	AP63525	38	AP63701	92	AP66976*	80
AP63466	75	AP63526	40	AP63702	93	AP66977*	80
AP63467	101	AP63527	38	AP63703	27	AP66978*	80
AP63470	32, 68	AP63528	40	AP63720	93	AP66979*	80
AP63471	32, 68, 84	AP63529	41	AP63721	93	AP66989*	80
AP63472	29	AP63531	102	AP63722	94	AP66992*	80
AP63473	32	AP63532	102	AP63723	94	AP66995*	81
AP63475*	33	AP63533	105	AP63724	13	AP83000	13
AP63476	33, 59, 69, 85	AP63534	40	AP63725	43	AP83006	27
AP63478	101	AP63535	39	AP63800AA*	4, 48	AP83007	36
AP63479	60	AP63536	43	AP63801AB*	4, 48	AP83008*	44
AP63480	67	AP63537	40	AP63802AC*	48	AP83009*	43
AP63481	26, 64	AP63538	43	AP63803AD*	4, 48	AP83010*	43
AP63482	35	AP63539	40	AP63804AE*	4, 48	AP83011*	43
AP63483	71	AP63540	38	AP63805BA*	72, 78	AP65110	92
AP63484	71	AP63541	38	AP63806BB*	72	APM61067	5, 49
AP63485	92	AP63542	38	AP63807BC*	72	BG	73
AP63486	92	AP63543	41	AP63808BD*	72, 78	HP004X	6, 50
AP63489	8	AP63544	41	AP63809BE*	72	HP005X	6, 50
AP63490	7	AP63545	39	AP63810BF*	72, 78	HP007X	7, 50
AP63491	7, 50	AP63560	90	AP63811BI*	73, 78	HP008X	7, 50
AP63492	9	AP63561	90	AP63812BJ*	73, 78	HP020X	74
AP63493	19, 31, 40	AP63562	94	AP63813BN*	73, 79	HP021X	74
AP63494*	21	AP63563	94	AP63814BP*	73, 79	HP022X	74
AP63495	20	AP63580	74	AP64800 ... Supersedes to AP64900		HP032X	18, 57
AP63496	17	AP63581	49	AP64801 ... Supersedes to AP64901		PFF31795	27, 64
AP63497	21, 33, 41	AP63582	82	AP64900*	29, 66	PFF4595	14, 54
AP63498	30	AP63583	56	AP64901*	66	PFF4596	14, 65
AP63499	36	AP63600	108	AP65110*	5	PFF4606	27
AP63501	6	AP63601	108	AP65120*	5	PFF4616	28, 64
AP63502	17	AP63640*	30	AP65122*	16	PFF4617	37
AP63503	17, 56	AP63641*	66	AP65123*	16	PFF50216	97
AP63504	30	AP63642*	67	AP65124*	16	PFF58567	97
AP63505	39	AP63660 ... Supersedes to AP63661		AP66818 ... Supersedes to AP66918		PFF829B	13
AP63506	39	AP63661*	18, 56	AP66821 ... Supersedes to AP66921		PFL2016	28, 37, 64, 71
AP63507	39	AP63662*	18, 57	AP66855 ... Supersedes to AP66955		PFRK20567	13
AP63515	34, 69	AP63663*	18, 57	AP66857 ... Supersedes to AP66957		RK31019	14, 54
AP63516	34, 70	AP63680*	82	AP66858 ... Supersedes to AP66958		RK31449	14, 65
AP63517	36	AP63681*	82	AP66889 ... Supersedes to AP66989		RK31821	28, 37, 65, 71
AP63518	36	AP63682*	82	AP66892 ... Supersedes to AP66992		RK32138	28
AP63519	36	AP63683*	82	AP66895 ... Supersedes to AP66995		RK42043	97
AP63520	29	AP63684*	83	AP66918*	81	S14-101DAM	97
AP63521	41	AP63685*	83	AP66921*	81		
AP63522	42	AP63686*	83	AP66955*	81		
AP63523	42	AP63687*	83	AP66957*	81		

* Indicates products with a core charge.

TRADEMARKS

AGCO® is a registered trademark of AGCO Corporation.

Bosch® is a registered trademark licensed by Robert Bosch GmbH, Germany.

Caterpillar® and CAT® are registered trademarks of Caterpillar, Inc.

Cummins®, ISB®, and B-Series® are registered trademarks of Cummins Engine Company, Inc.

Detroit Diesel® and Series 50/60® are registered trademarks of Detroit Diesel Corporation.

Dodge® and Ram® are registered trademarks of Chrysler Group, LLC.

DMAX® is a registered trademark of DMAX Ltd.

Ford®, Motorcraft®, and Power Stroke® are registered trademarks of Ford Motor Company.

Freightliner® is a registered trademark of Daimler AG.

F Series®, F-250®, F-350®, F-450®, F-550®, F-650®, F-750®, E Series®, Econoline®, and Excursion® are registered trademarks of Ford Motor Company.

GM®, GMC®, Chevrolet®, Chevy®, Duramax®, Express®, Savana®, Sierra®, and Silverado® are registered trademarks of General Motors, LLC.

HEUI® is a registered trademark of Caterpillar, Inc.

IH® is a registered trademark of CNH America, LLC.

International® and MaxxForce® are registered trademarks of International Truck Intellectual Property Company, LLC.

Jeep®, Jeep Liberty®, and Jeep Grand Cherokee® are registered trademarks of Chrysler Group, LLC.

John Deere® is a registered trademark of Deere & Company.

Mack® and Mack Trucks® are registered trademarks of Volvo AB.

M-B®, OM®, and Mercedes-Benz® are registered trademarks of Daimler AG.

Navistar® is a registered trademark of Navistar International Corporation.

Perkins® and 1300 Series EDi® are registered trademarks of Perkins Engines Company Limited, a subsidiary of Caterpillar, Inc.

Siemens® is a registered trademark of Siemens AG.

Sprinter® and/or Mercedes-Benz® Sprinter® are registered trademarks of Daimler AG.

Stanadyne® is a registered trademark of Stanadyne Corporation.

All other manufacturer names, models, part numbers, and product images used herein are for reference purposes only.



ALLIANT POWER

A DIESEL FORWARD COMPANY



6167 Pepsi Way, Windsor, WI 53598 • 608.842.5180 • 866.283.1785 • fax: 608.842.5150 • alliantpower.com



©2015 Alliant Power – A Diesel Forward Company All Rights Reserved

APG0715